

ELECTRIC
BASS LINES
NO. 3

By CAROL KAYE

Contents

Chord Theory

MAJOR CHORDS

G **C**

G7 **C7**

G9 **C9**

G6 **C6**

G13 **C13**

G7b5 **C7b5**

G7b9 **C7b9**

G7b5b9 **C7b5b9**

G+ **C+**

G7+ (G7 aug) **C7+ (C7 aug)**

G maj 7 (or GM or G 7) **C maj 7 (or CM or C 7)**

G maj 9 **C maj 9**

G 6/9 or G15 **C6/9 or C15**

G7+9 **C7+9**

G13b9 **C13b9**

G7sus4 **C7sus4**

MINOR CHORDS

Gm Cm

1 4 2 2 1 4 2 2

Gm7 Cm7

1 4 3 1 4 1 4 3 1 4

Gm9 Cm9

1 4 3 1 4 1 1 4 3 1 4 4

Gm7b5 (or G^o) Cm7b (or C^o)

1 4 2 1 4 1 4 2 1 4

Gm7b9 Cm7b9

1 4 3 1 4 1 1 4 3 1 4 4

Gm7b5b9 Cm7b5b9

1 4 2 1 4 1 1 4 2 1 4 4

Gm6 Cm6

2 1 4 1 4 2 1 4 1 4

Gm6/9 Cm6/9

(Opt.) (1) (4) (1) (4) (1) (4) (1) (4) (1) (4) (1) (4)

Gm add maj7 Cm add maj7

1 4 2 1 4 1 4 2 1 4

G^o C^o

1 4 1 2 1 4 1 2

G^o7 C^o7

(Opt.) (4) (1) (4) (1) (4) (1) (4) (1) (4) (1) (4)

G^o9 C^o9

1 4 1 4 1 4 1 4 1 4 1 4

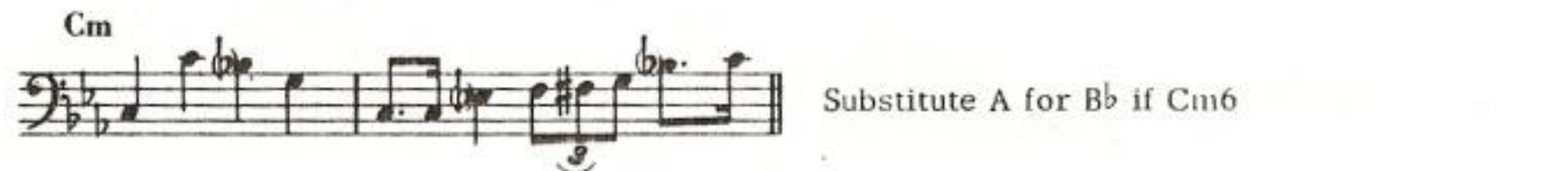
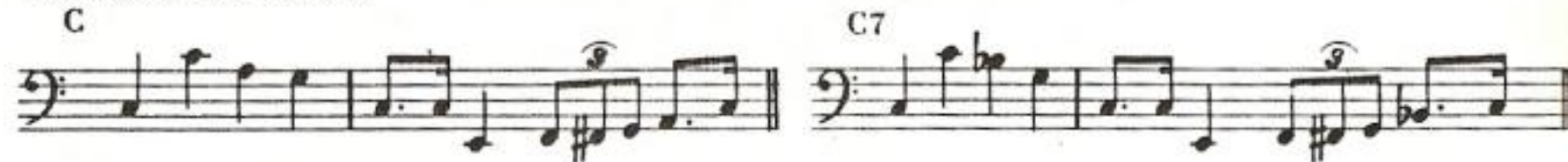
Key of C



SCALE PRACTICE



WALKING PATTERNS

Substitute A for B \flat if Cm6

SCALE PRACTICE



READING PRACTICE



Two staves of bass guitar notation in the key of G major. The first staff contains two measures of music with fingerings: 1 0 4 0 4 1 | 1 3 4 1 3 4 | 1 4 2 | 1 3 4. The second staff contains two measures with fingerings: 1 3 2 3 1 4 | 1 3 4 3 1 2 | 4 1 2 4 1 3 | 4 4 4 1 3 2 1.

Key of G

Three staves of bass guitar notation in the key of G major. The first staff has two measures with fingerings: 2 4 1 2 | 4 1 3 4 | 1 3 4 3 1 4 3 1 | 4 2 1 4 2 1 0. The second staff has two measures with fingerings: 2 1 4 2 1 4 2 1 | 4 3 1 4 4 1 4 3. The third staff has two measures with fingerings: 1 4 3 4 1 3 4 1 | 3 4 1 2 4 1 2 4 | 1 2 4 1 2 0.

SCALE PRACTICE

Two staves of bass guitar notation for scale practice in the key of G major. The first staff has two measures with fingerings: 1 3 2 1 | 4 3 1 2 | 1 3 1 1 4 2 1 4 | 1 3 4 3 2 1 1 4. The second staff has two measures with fingerings: 4 1 3 1 | 3 4 1 4 3 4 1 3 | 4 1 4 2 | 3 1 1 0 | 1 4 2.

WALKING PATTERNS

Three staves of bass guitar notation for walking patterns. The first staff is labeled 'G' and has two measures. The second staff is labeled 'G7' and has two measures. The third staff is labeled 'Gm' and has two measures. A note below the third staff reads: 'Substitute E for F# if Gm6'.

SCALE PRACTICE

Two staves of bass clef music in D major. The first staff shows an ascending eighth-note scale from D2 to D4. The second staff shows a descending eighth-note scale from D4 to D2.

WALKING PATTERNS

Three staves of bass clef music showing walking bass patterns. The first staff is in D major with a 'D' chord symbol above the first measure and a 'D7' chord symbol above the second measure. The second staff is in D minor with a 'Dm' chord symbol above the first measure. The third staff contains the text 'Substitute B for C♭ if Dm6'.

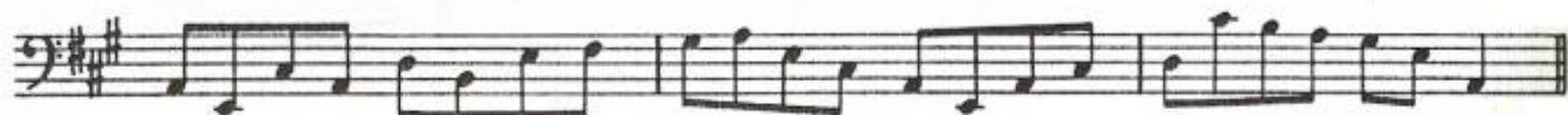
READING PRACTICE

Five staves of bass clef music for reading practice. Each staff contains eighth-note patterns with various fingering numbers (1, 2, 3, 4) written above the notes to indicate fingerings. The patterns include ascending and descending runs, as well as more complex rhythmic figures.

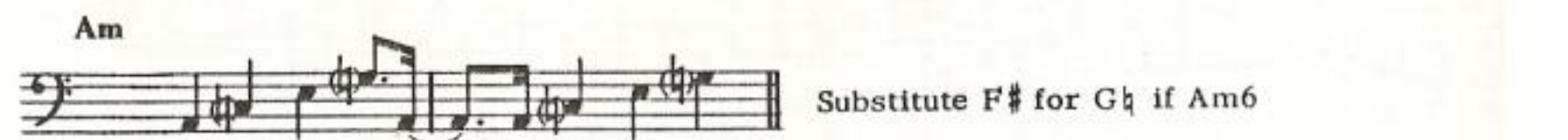
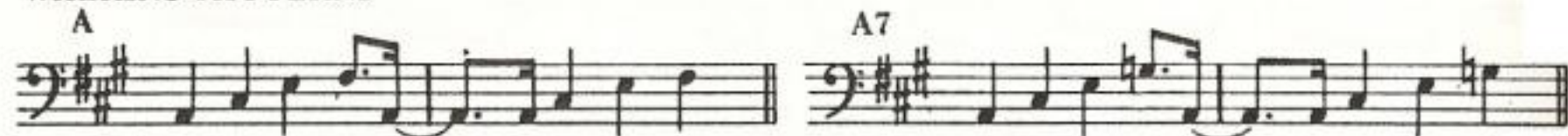
Key of A



SCALE PRACTICE



WALKING PATTERNS



READING PRACTICE



The first four staves of music are in bass clef with a key signature of three sharps (F#, C#, G#). The first staff contains a melodic line with slurs and dynamic markings 'p' and 'f'. The second staff continues the melodic line with slurs and a 'p' marking. The third and fourth staves show a more rhythmic, eighth-note pattern.

Key of E

The seven staves of music are in bass clef with a key signature of two sharps (F#, C#). They consist of continuous eighth-note patterns, likely serving as a technical exercise for electric bass. The patterns vary in their starting notes and rhythmic groupings.

SCALE PRACTICE

Scale practice exercise in E major, bass clef, 4/4 time. The first line shows an ascending eighth-note scale from E2 to E4. The second line shows a descending eighth-note scale from E4 to E2, with fingerings: 2, 4, 2, 4, 1, 2, 3, 4, 4, 2, 4, 3.

WALKING PATTERNS

E

Walking pattern for E major chord in bass clef, 4/4 time. The pattern consists of eighth notes: E2, G#2, B2, D#3, E3, G#3, B3, E4.

E7

Walking pattern for E7 chord in bass clef, 4/4 time. The pattern consists of eighth notes: E2, G#2, B2, D#3, E3, G#3, B3, D4.

Em

Walking pattern for Em chord in bass clef, 4/4 time. The pattern consists of eighth notes: E2, G#2, B2, D#3, E3, G#3, B3, D4.

Substitute C# for D# if Em6

READING PRACTICE

Reading practice exercise 1 in E major, bass clef, 4/4 time. The first line shows an ascending eighth-note scale from E2 to E4. The second line shows a descending eighth-note scale from E4 to E2.

Reading practice exercise 2 in E major, bass clef, 4/4 time. The first line shows an ascending eighth-note scale from E2 to E4. The second line shows a descending eighth-note scale from E4 to E2.

Reading practice exercise 3 in E major, bass clef, 4/4 time. The first line shows an ascending eighth-note scale from E2 to E4. The second line shows a descending eighth-note scale from E4 to E2.

Reading practice exercise 4 in E major, bass clef, 4/4 time. The first line shows an ascending eighth-note scale from E2 to E4. The second line shows a descending eighth-note scale from E4 to E2.

Key of B



SCALE PRACTICE



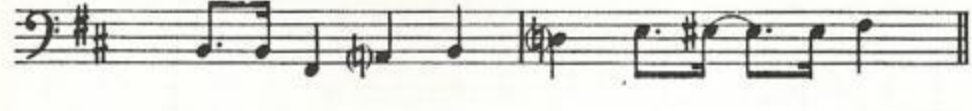
WALKING PATTERNS B



B7

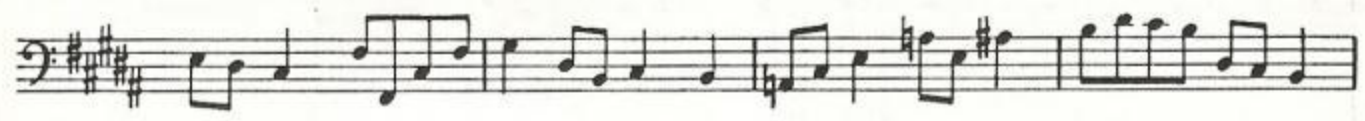


Bm



Substitute G# for A b if Bm6

READING PRACTICE



READING PRACTICE (Continued)

Three staves of musical notation in the key of F# (three sharps: F#, C#, G#). The notation consists of eighth and quarter notes, some beamed together, and rests. The first staff has four measures. The second staff has four measures, with a fermata over the first measure. The third staff has four measures.

Key of F#

Three staves of musical notation in the key of F# (three sharps: F#, C#, G#). The notation consists of eighth and quarter notes, some beamed together, and rests. The first staff has four measures. The second staff has four measures. The third staff has four measures.

SCALE PRACTICE

Two staves of musical notation in the key of F# (three sharps: F#, C#, G#). The notation consists of eighth and quarter notes, some beamed together, and rests. The first staff has four measures. The second staff has four measures.

WALKING PATTERNS

F#

A musical staff in bass clef with a key signature of two sharps (F# and C#). The melody consists of eighth notes: F#2, G#2, A2, B2, C#3, D3, E3, F#3, G#3, A3, B3, C#4. The final note is a dotted quarter note.

F#7

A musical staff in bass clef with a key signature of two sharps. The melody consists of eighth notes: F#2, G#2, A2, B2, C#3, D3, E3, F#3, G#3, A3, B3, C#4. The final note is a dotted quarter note with a trill-like flourish.

F#m

A musical staff in bass clef with a key signature of two sharps. The melody consists of eighth notes: F#2, G#2, A2, B2, C#3, D3, E3, F#3, G#3, A3, B3, C#4. The final note is a dotted quarter note.

Substitute D# for E b if F#m6

READING PRACTICE

First staff of reading practice with eighth notes: F#2, G#2, A2, B2, C#3, D3, E3, F#3, G#3, A3, B3, C#4.

Second staff of reading practice with eighth notes and some slurs.

Third staff of reading practice with eighth notes and slurs.

Slower

Fourth staff of reading practice, marked 'Slower', with eighth notes and slurs.

Fifth staff of reading practice with eighth notes and slurs.

Faster

Sixth staff of reading practice, marked 'Faster', with eighth notes and slurs.

Seventh staff of reading practice with eighth notes and slurs.

Key of F



SCALE PRACTICE



WALKING PATTERNS

F



F7



Fm



Substitute D for Eb if necessary

READING PRACTICE

The first six staves of music contain various bass lines with detailed fingering. The first staff includes a key signature change from one flat to two flats. The second staff features a key signature change to one sharp. The third staff includes a key signature change to two flats. The fourth staff includes a key signature change to one sharp. The fifth staff includes a key signature change to one flat. The sixth staff includes a key signature change to two flats. Each staff contains multiple measures of eighth and quarter notes, often with slurs and accents, and is annotated with fingering numbers (1-4) and accidentals (sharps and flats).

Key of Bb

The final two staves of music are in the key of Bb. The first staff consists of a single line of eighth notes. The second staff consists of a single line of quarter notes. Both staves are in the key of Bb and do not contain any fingering numbers or accidentals.

SCALE PRACTICE

WALKING PATTERNS

B \flat

B \flat 7

B \flat m

Substitute G for A \flat if B \flat m6

READING PRACTICE

Two staves of musical notation in bass clef. The first staff contains a sequence of notes with various accidentals (sharps, flats, naturals) and rests. The second staff continues with a similar sequence of notes and rests.

Key of Eb

Two staves of musical notation in bass clef, showing a walking bass line pattern. The notes are primarily eighth and quarter notes, moving in a steady, rhythmic fashion.

SCALE PRACTICE

Two staves of musical notation in bass clef, showing a scale practice exercise. The notes are eighth notes, moving up and down the scale in a steady, rhythmic fashion.

WALKING PATTERNS

Eb

Staff of musical notation in bass clef for Eb walking pattern. The notes are quarter notes, moving in a steady, rhythmic fashion.

Eb7

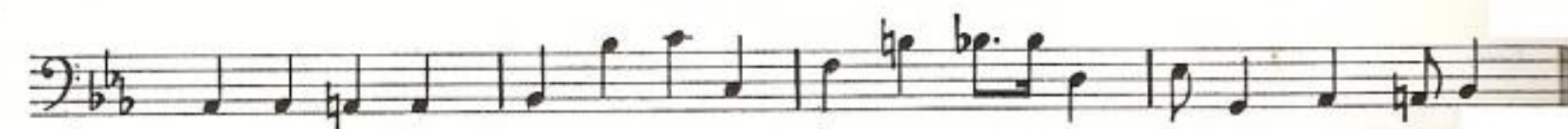
Staff of musical notation in bass clef for Eb7 walking pattern. The notes are quarter notes, moving in a steady, rhythmic fashion.

Ebm

Staff of musical notation in bass clef for Ebm walking pattern. The notes are quarter notes, moving in a steady, rhythmic fashion.

Substitute C for Db if Ebm6

READING PRACTICE



Key of A \flat 

SCALE PRACTICE



WALKING PATTERNS

A \flat A \flat 7A \flat mSubstitute F for G \flat if A \flat m6

READING PRACTICE

Seven staves of musical notation for electric bass in 3/4 time, key of D-flat major. The notation includes various rhythmic patterns, accidentals, and articulation marks like slurs and accents.

Key of D \flat

Two staves of musical notation for electric bass in 3/4 time, key of D-flat major, featuring eighth-note and sixteenth-note runs.

SCALE PRACTICE

WALKING PATTERNS

Db

Db7

C#m (Dbm)

Substitute Bb for B if Dbm6 (C#m6)

READING PRACTICE

READING PRACTICE (Continued)

Three staves of musical notation in the key of Gb (three flats). The first staff contains four measures of music. The second staff contains four measures of music. The third staff contains four measures of music. The notation includes eighth and quarter notes, rests, and accidentals.

Key of Gb

Three staves of musical notation in the key of Gb (three flats). The first staff contains four measures of music. The second staff contains four measures of music. The third staff contains four measures of music. The notation includes eighth and quarter notes, rests, and accidentals.

SCALE PRACTICE

Two staves of musical notation in the key of Gb (three flats). The first staff contains four measures of music. The second staff contains four measures of music. The notation includes eighth and quarter notes, rests, and accidentals.

WALKING PATTERNS

G \flat G \flat 7F \sharp m (G \flat m)Substitute E \flat (D \sharp)
for F \flat (E) if G \flat m6

READING PRACTICE



Scale Practice





Slower



12th fret
Harmonic

Happy Together

(Original Bass Line as
recorded with Mel Tormé)

The image displays a musical score for the bass line of the song "Happy Together". The score is written in bass clef with a key signature of three sharps (F#, C#, G#) and a 4/4 time signature. It consists of ten staves of music. The notation includes various rhythmic values such as quarter notes, eighth notes, and sixteenth notes, along with rests and ties. There are several measures with triplets and some measures with a fermata. The music is a single melodic line for the electric bass.

The image displays ten staves of electric bass sheet music, all in the key of G major (indicated by two sharps: F# and C#). The music is written in a 4/4 time signature. The first staff begins with a double bar line and a key signature change to G major. The notation includes a variety of rhythmic values such as quarter notes, eighth notes, and sixteenth notes, often grouped with slurs. There are several triplet markings (indicated by a '3' over a group of notes) and some notes with a circled '0' below them, possibly indicating natural harmonics or specific fretting techniques. The piece concludes with a double bar line and the word 'Fade' written above the final staff.