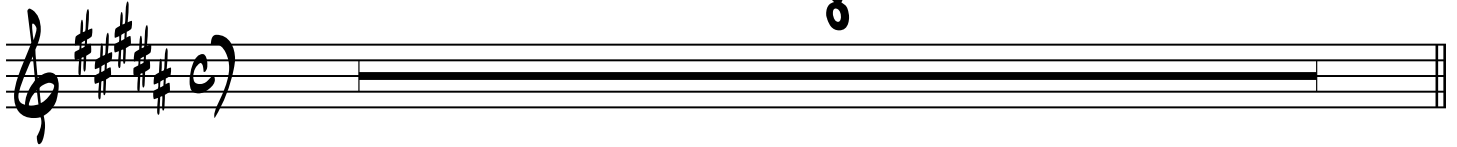


TRUMPET

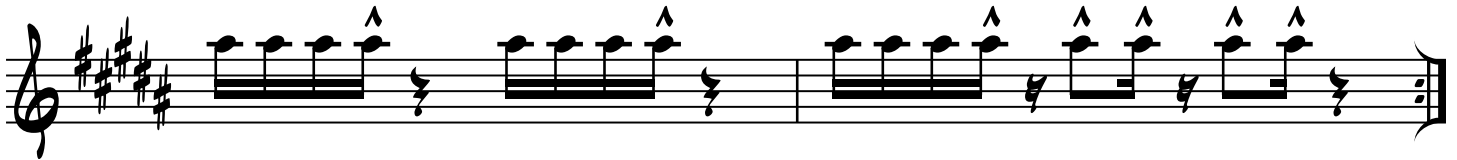
ANOTHER STAR

STEVIE WONDER

8

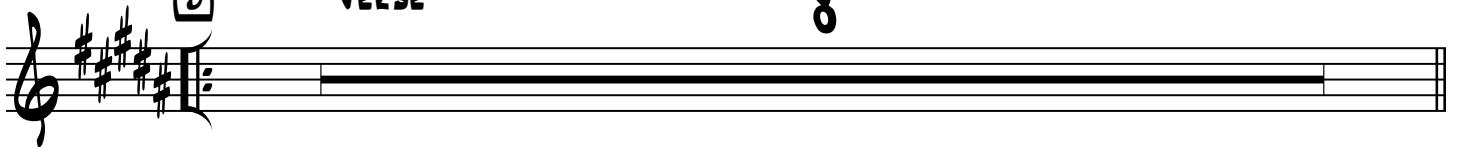


(A) TACET 1ST X



(B) VERSE

8

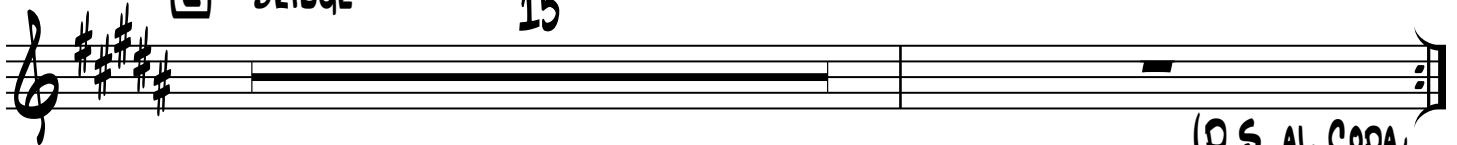


TACET 1ST X



(C) BRIDGE

15



(D.S. AL CODA)

The image shows a musical score for trumpet, page 2, in G major (three sharps). It consists of three staves of music. The first staff begins with a square box containing a circle with a dot, likely a rehearsal mark. The music features various articulations, including accents (^) and slurs. The second staff continues the melodic line with similar articulations. The third staff features a more rhythmic, eighth-note pattern with accents. The piece concludes with a double bar line and the instruction "VAMP OUT".

HEADS UP FOR POSSIBLE BREAK DOWNS, BUILD UPS AND SOLOING DURING VAMP OUT!

ALTO

ANOTHER STAR

STEVIE WONDER

8

(A) TACET 1ST X

(B) VERSE

8

TACET 1ST X

(C) BRIDGE

15

(D.S. AL CODA)

Handwritten musical notation for 'Another Star' - Alto, page 2. The score consists of three staves in treble clef with a key signature of four sharps (F#, C#, G#, D#). The first staff begins with a square box containing a circle and a vertical line, followed by a repeat sign. The notation includes various note values, rests, and accents (^). The third staff concludes with the instruction 'VAMP OUT'.

HEADS UP FOR POSSIBLE BREAK DOWNS, BUILD UPS AND SOLOING DURING VAMP OUT!

TENOR

ANOTHER STAR

STEVIE WONDER

8

(A) TACET 1ST X

(B) VERSE

8

TACET 1ST X

(C) BRIDGE

15

(D.S. AL CODA)

□

VAMP OUT

HEADS UP FOR POSSIBLE BREAK DOWNS, BUILD UPS AND SOLOING DURING VAMP OUT!

TROMBONE

ANOTHER STAR

STEVIE WONDER

8

A TACET 1ST X

B VERSE 8

TACET 1ST X

C BRIDGE 15

D.S. AL CODA

Handwritten musical notation for trombone, page 2. The notation is in bass clef with a key signature of two sharps (F# and C#). It consists of three staves of music. The first staff begins with a square box containing a circled '1'. The notation includes various note values, rests, and accents. The third staff ends with the text "VAMP OUT".

HEADS UP FOR POSSIBLE BREAK DOWNS, BUILD UPS AND SOLOING DURING VAMP OUT!

RHYTHM

ANOTHER STAR

STEVIE WONDER

SAMBA PNO & DRG 1ST X

RHY. ENT

A

F#-9

"LA-LA-LA"

E7

DMAS7

C#-7

B-7

C#7(#5)

F#-9

B

F#-9 VERSE

E7

DMAS7

C#-7

B-7

C#7(#5)

F#-9

F#-9

E7

DMAS7

C#-7

Bass line with chords: B-7, C#7(#5), F#-9, TO CODA

Bass line with chords: E-7 BRIDGE, A7, DMAS7

Bass line with chords: E-7, A7, DMAS7

Bass line with chords: F#-7, B7, EMAS7, C#7

Bass line with chords: F#-7, G#7, B/C#, D.S. AL CODA

Bass line with chords: F#-9, E7, DMAS7, C#-7

Bass line with chords: B-7, C#7(#5), F#-9, VAMP OUT

HEADS UP FOR POSSIBLE BREAK DOWNS, BUILD UPS AND SOLOING DURING VAMP OUT!