

Solo Violin

# Eleanor Rigby

Lennon-McCartney

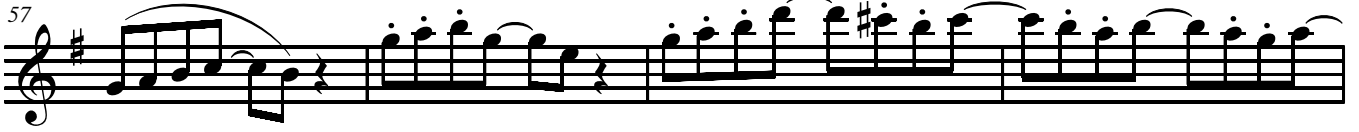
The image displays a musical score for a solo violin performance of the song "Eleanor Rigby" by Lennon-McCartney. The score is written in treble clef with a key signature of one sharp (F#) and a common time signature (C). It consists of ten staves of music, each beginning with a measure number: 1, 6, 11, 15, 19, 24, 29, 33, 37, 42, and 47. The notation includes various rhythmic values such as eighth and sixteenth notes, often beamed together, and rests. Phrasing is indicated by slurs and ties. Trills are marked with the abbreviation "tr" above or below specific notes. The score concludes with a final cadence on the tenth staff.

Eleanor Rigby

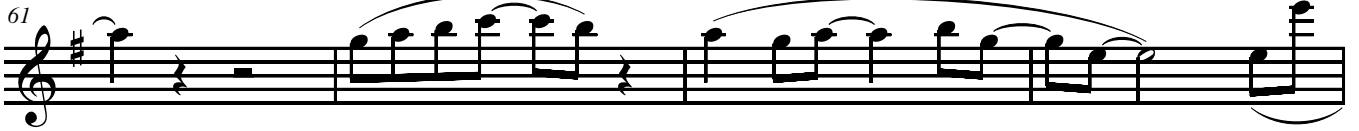
53



57



61



65



70

