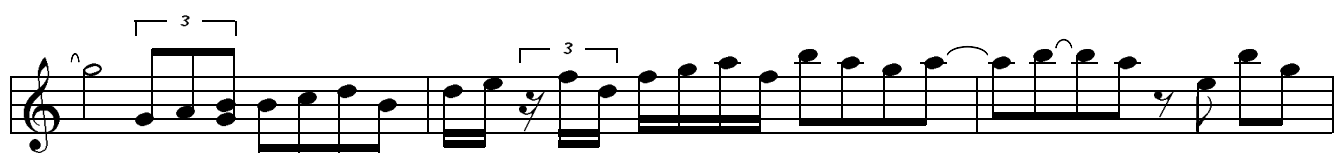
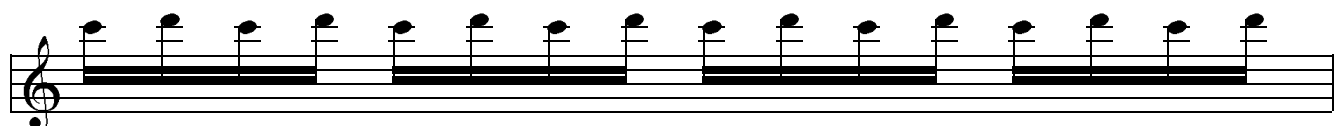
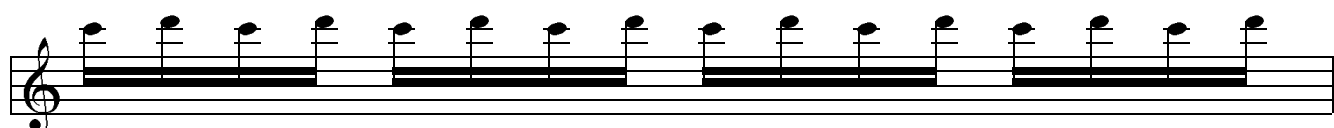
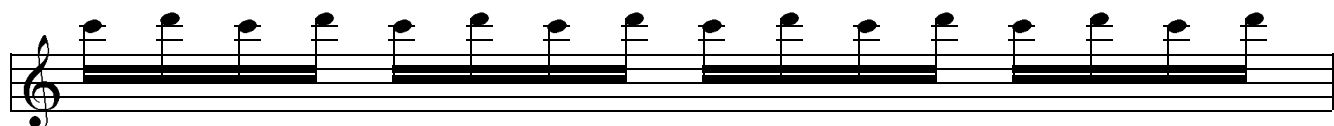
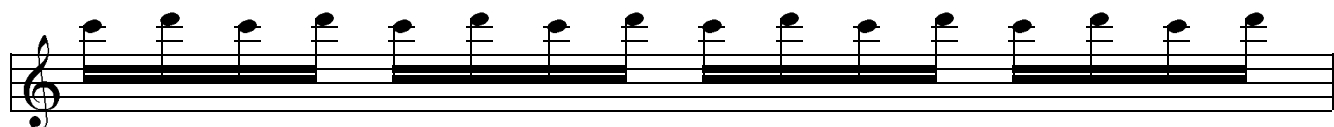
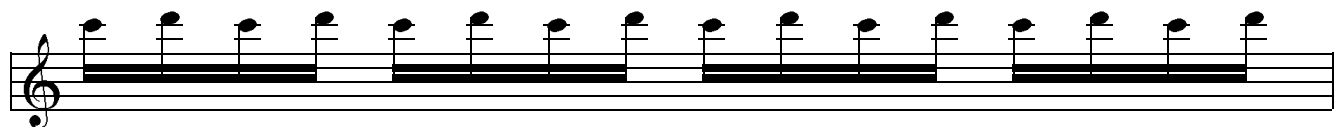
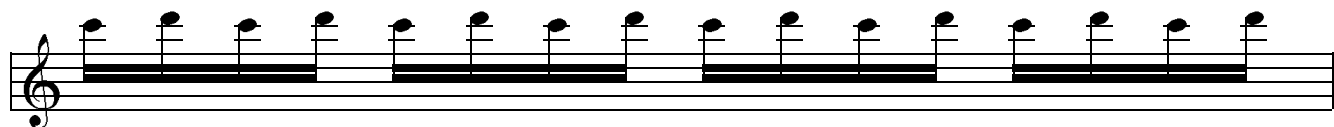


Classical Gas

This musical score for "Classical Gas" is presented in ten staves. The first staff begins in 4/4 time with a series of rests, followed by a melodic line starting on G4. The second staff continues this melody with eighth-note patterns and a slur over the final two notes. The third staff features a more rhythmic eighth-note pattern. The fourth staff introduces sixteenth-note runs and a sharp sign on the fifth line. The fifth staff continues with eighth-note patterns and a sharp sign on the second line. The sixth staff features a complex rhythmic pattern with sixteenth notes and a sharp sign on the second line. The seventh staff shows a melodic line with a sharp sign on the second line and a slur over the final notes. The eighth staff changes to 7/8 time, starting with a quarter note followed by eighth notes. The ninth staff continues in 7/8 time with eighth-note patterns and a slur over the final notes. The tenth staff concludes the piece in 7/8 time with eighth-note patterns.

This image displays a page of musical notation, consisting of 11 staves of music. The notation is written in treble clef and includes various musical symbols such as notes, rests, accidentals (sharps and flats), and dynamic markings. The music is organized into measures, with some measures containing complex rhythmic patterns and others featuring rests. The notation is presented in a standard, clear format, suitable for a music score.



This image displays a page of musical notation for guitar, consisting of ten staves. The notation is written in treble clef and includes various musical elements such as notes, rests, accidentals (sharps, flats, naturals), and triplets. The first staff begins with a treble clef and a key signature of one sharp (F#). The music features a mix of eighth and sixteenth notes, often beamed together. Several triplets are indicated by a bracket with the number '3' above the notes. The notation includes various accidentals, including sharps, flats, and naturals. The final staff is empty, suggesting the end of the page or a section.