

# "Night Train"

Solo by Ray Brown

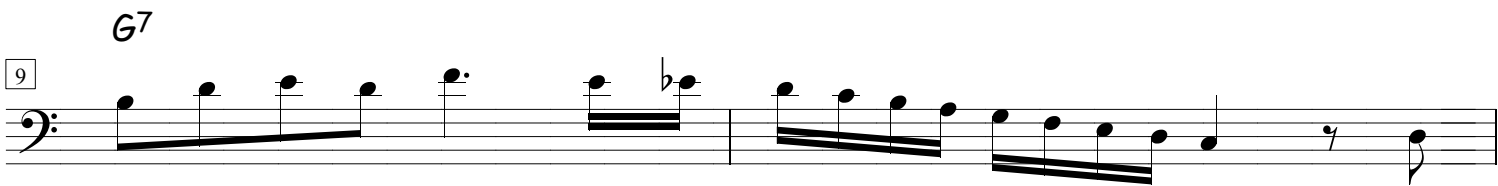
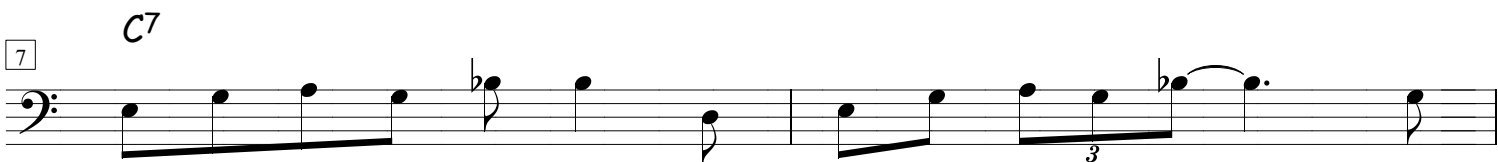
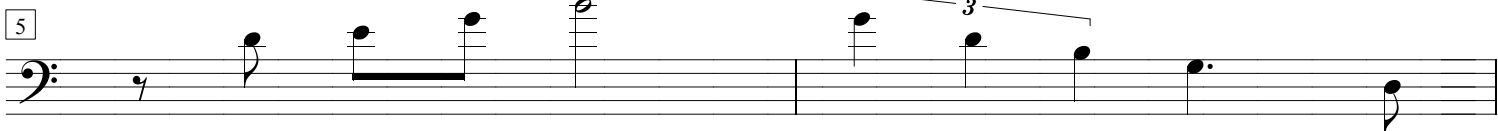
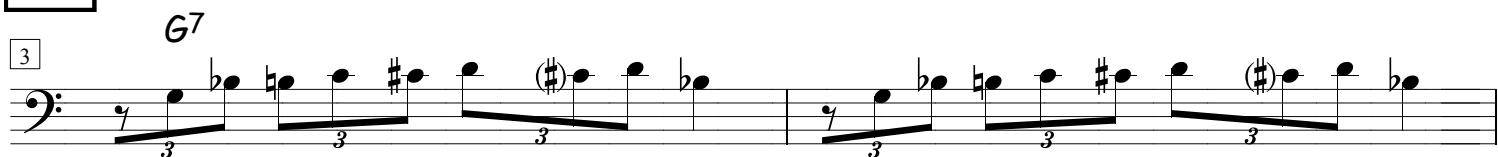
(As recorded on "Night Train" w/ Oscar Peterson Trio)

Transcription: Gonzalo Tejada

"BREAK"



SOLO



2 Coro

15 *G7* 8va

Musical staff for measure 15, bass clef. The staff contains a sequence of notes: Bb, A, G, F, E, D, C, Bb, A, G. A dashed line labeled '8va' spans from the first note to the eighth note. A *G7* chord symbol is placed above the staff.

17 8va

Musical staff for measure 17, bass clef. The staff contains a sequence of notes: Bb, A, G, F, E, D, C, Bb, A, G. A dashed line labeled '8va' spans from the first note to the eighth note.

19 *C7* 8va

Musical staff for measure 19, bass clef. The staff contains a sequence of notes: C, Bb, A, G, F, E, D, C, Bb, A, G. The first two notes (C, Bb) and the next two (A, G) are marked with a '3' below them, indicating triplets. A dashed line labeled '8va' spans from the first note to the eighth note. A *C7* chord symbol is placed above the staff.

21 *G7* 8va

Musical staff for measure 21, bass clef. The staff contains a sequence of notes: Bb, A, G, F, E, D, C, Bb, A, G. A dashed line labeled '8va' spans from the first note to the eighth note. A *G7* chord symbol is placed above the staff.

23 *Eb7* *D7*

Musical staff for measure 23, bass clef. The staff contains a sequence of notes: Bb, A, G, F, E, D, C, Bb, A, G. A *Eb7* chord symbol is placed above the first note, and a *D7* chord symbol is placed above the eighth note.

25 *G7* *D7*

delayed.....

Musical staff for measure 25, bass clef. The staff contains a sequence of notes: C, Bb, A, G, F, E, D, C, Bb, A, G. A *G7* chord symbol is placed above the first note, and a *D7* chord symbol is placed above the eighth note. A long slur covers the first eight notes. Below the staff, the text 'delayed.....' is written.