

DIE SIEBEN TodsÜNDEN

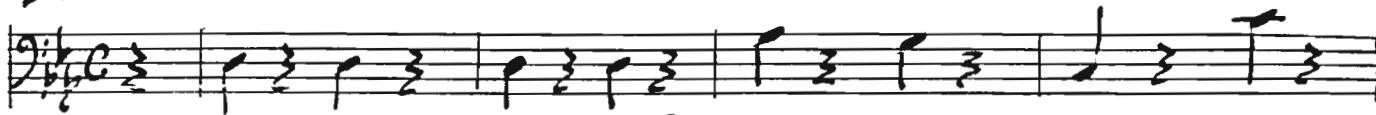
Bass Accordeon

$\text{♩} = 80$

~ Prolog ~

Kurt WEILL
1900-1950

Andante sostenuto



f not too loud. But firm



mf

p

1

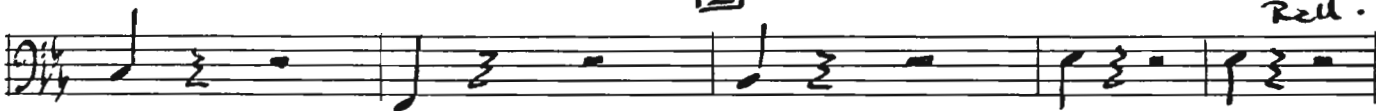


Rall. $\hat{=}$ tempo



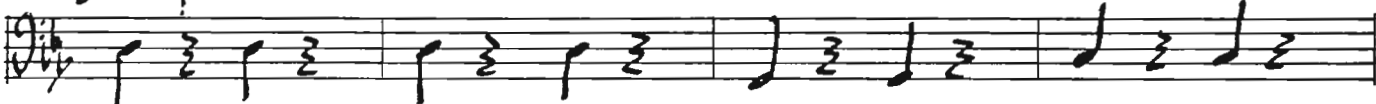
p

2



Rall.

$\hat{=}$ tempo



mp

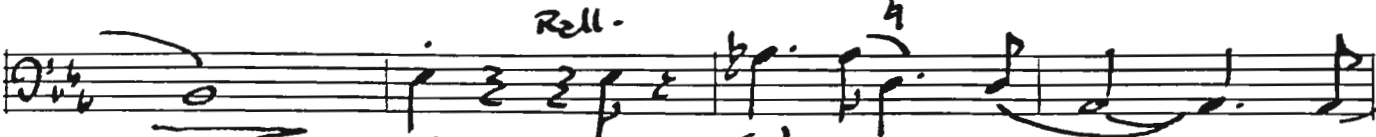
3



mf

f

2 bit faster



Rall.

mf

solo
mp

Ritard



1

Bass Accordion

14 slower

pp

5

p

cresc. Sully

mf mp full

mp lightly

Rit. 6 Ritard 2 tempo

dim. pp mp

mf mp

Ritard

firmly fine

Arranged by BPSch.