

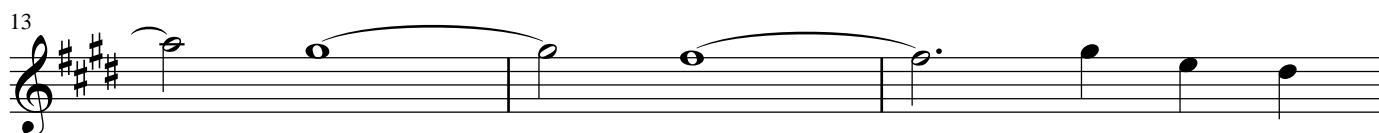
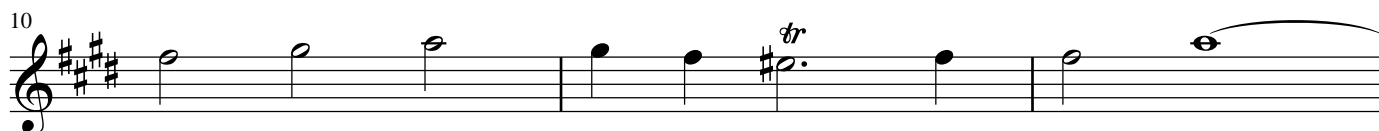
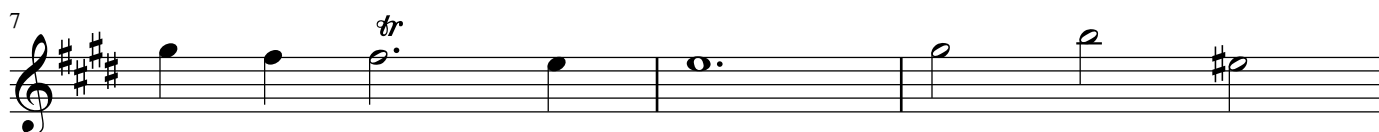
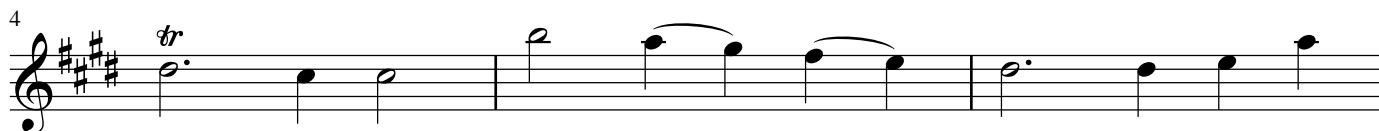
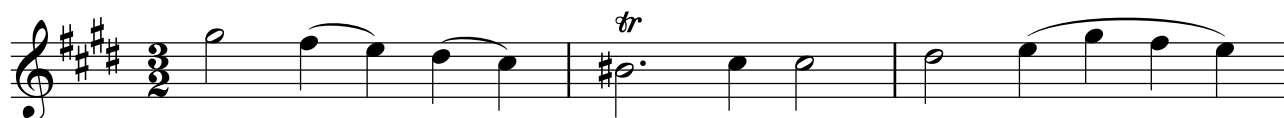
Sonata No.6 in E

for Violin

Georg Friedrich HÄNDEL
(1685-1759)

III. LARGO

Largo



(attacca)

Sonata No.6 in E

for Violin

Georg Friedrich HÄNDEL
(1685-1759)

III. LARGO

Largo

Violin: G^4 , A^4 , B^4 , C^5 . Trills above measures 1 and 4.

Piano: Right hand chords; Left hand single notes.

Violin: D^5 , E^5 , $\text{F}^{\#5}$, G^5 . Trills above measures 1 and 4.

Piano: Right hand chords; Left hand single notes.

Violin: A^5 , B^5 , C^6 , D^6 . Trills above measures 1 and 4.

Piano: Right hand chords; Left hand single notes.

Violin: E^6 , $\text{F}^{\#6}$, G^6 , A^6 . Trills above measures 1 and 4.

Piano: Right hand chords; Left hand single notes.

(attacca)