

Concerto à 4 Violini No. 1

Violino 1

Georg Philipp Telemann (1681–1767)

TWV 40:201

Largo

4

13

20

27

32

37

tr.

Allegro

Musical score for Violino 1, Allegro section, measures 1-42. The score is written in treble clef with a key signature of one sharp (F#) and a common time signature (C). The tempo is marked 'Allegro'. The music consists of ten staves of notation. The first staff (measures 1-5) begins with a half note G4, followed by quarter notes A4, B4, and C5. The second staff (measures 6-9) continues with quarter notes D5, E5, and F#5, followed by a quarter rest. The third staff (measures 10-13) features eighth notes G5, A5, B5, and C6. The fourth staff (measures 14-17) has quarter notes D6, E6, F#6, and G6. The fifth staff (measures 18-21) contains eighth notes A6, B6, and C7. The sixth staff (measures 22-25) has quarter notes D7, E7, F#7, and G7. The seventh staff (measures 26-29) features quarter notes A7, B7, and C8. The eighth staff (measures 30-33) contains quarter notes D8, E8, F#8, and G8. The ninth staff (measures 34-37) has quarter notes A8, B8, and C9. The tenth staff (measures 38-42) features quarter notes D9, E9, F#9, and G9, followed by a quarter rest.

Adagio

Musical score for Violino 1, Adagio section, measures 43-47. The score is written in treble clef with a key signature of one sharp (F#) and a common time signature (C). The tempo is marked 'Adagio'. The music consists of one staff of notation. The first staff (measures 43-47) begins with a half note G4, followed by quarter notes A4, B4, and C5. The second staff (measures 44-47) continues with quarter notes D5, E5, and F#5, followed by a quarter rest.

Vivace

10

20

29

38

53

64

75

85

94

103

111

p

f

4

3

2

Concerto à 4 Violini No. 2

Georg Philipp Telemann (1681–1767)
TWV 40:202

Violino 1

Adagio

Musical notation for the Adagio section, measures 1-4. The key signature is one sharp (F#) and the time signature is common time (C). The melody consists of quarter notes and half notes.

Allegro

Musical notation for the Allegro section, measures 5-8. The key signature is one sharp (F#) and the time signature is common time (C). The melody features eighth-note patterns.

5

Musical notation for the Allegro section, measures 9-12. The key signature is one sharp (F#) and the time signature is common time (C). The melody continues with eighth-note patterns.

9

Musical notation for the Allegro section, measures 13-16. The key signature is one sharp (F#) and the time signature is common time (C). The melody continues with eighth-note patterns.

13

Musical notation for the Allegro section, measures 17-18. The key signature is one sharp (F#) and the time signature is common time (C). A triplet of eighth notes is indicated with a '3' above the staff.

18

Musical notation for the Allegro section, measures 19-20. The key signature is one sharp (F#) and the time signature is common time (C). The melody continues with eighth-note patterns.

21

Musical notation for the Allegro section, measures 21-24. The key signature is one sharp (F#) and the time signature is common time (C). The melody continues with eighth-note patterns.

25

Musical notation for the Allegro section, measures 25-28. The key signature is one sharp (F#) and the time signature is common time (C). The melody continues with eighth-note patterns.

Grave

Musical notation for the Grave section, measures 29-32. The key signature is one sharp (F#) and the time signature is 3/2. The melody consists of half notes and quarter notes. A fermata is placed over the first measure.

9

Musical notation for the Grave section, measures 33-36. The key signature is one sharp (F#) and the time signature is 3/2. The melody continues with half notes and quarter notes.

17

Musical notation for the Grave section, measures 37-40. The key signature is one sharp (F#) and the time signature is 3/2. A fermata is placed over the first measure of this line.

25

Musical notation for the Grave section, measures 41-44. The key signature is one sharp (F#) and the time signature is 3/2. The melody continues with half notes and quarter notes.

Allegro

Musical score for Violino 1, page 5, marked **Allegro**. The score is written in treble clef with a key signature of one sharp (F#) and a common time signature (C). The piece consists of 40 measures, with measure numbers 4, 8, 12, 15, 18, 21, 25, 28, 32, 35, and 39 indicated at the beginning of their respective staves. The music features a variety of rhythmic patterns, including eighth and sixteenth notes, and rests. The tempo is indicated as **Allegro**.

Concerto à 4 Violini No. 3

Violino 1

Georg Philipp Telemann (1681–1767)
TWV 40:203

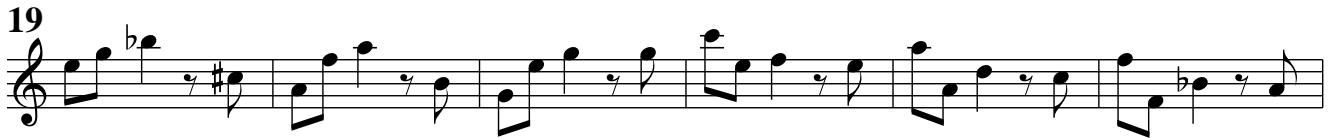
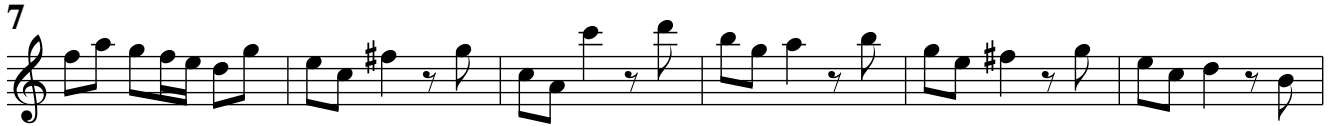
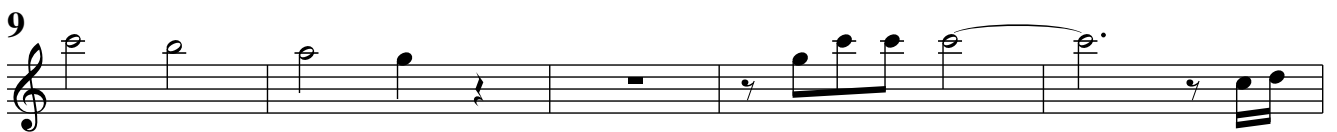
Grave

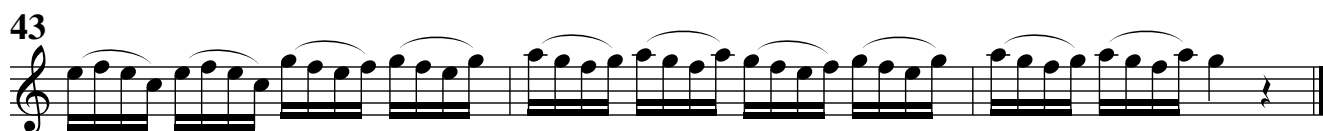
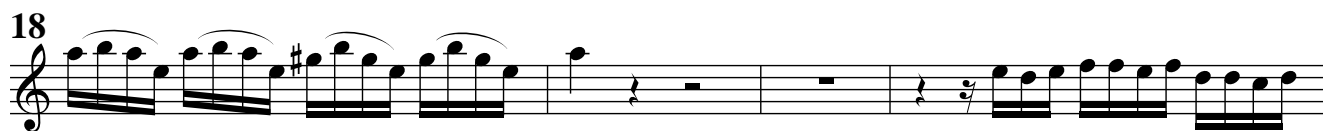
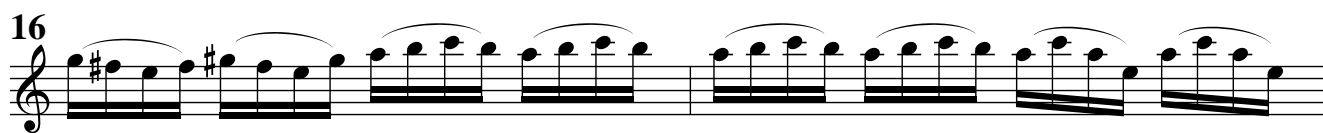
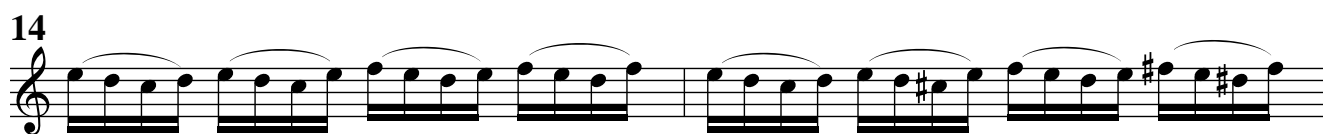
Musical score for the first section, marked "Grave". It consists of three staves of music in common time (C). The first staff begins with a treble clef and a common time signature. The second staff starts at measure 6. The third staff starts at measure 11 and includes dynamic markings: *p*, *pp*, and *ppp*.

Allegro

Musical score for the second section, marked "Allegro". It consists of six staves of music in common time (C). The first staff begins with a treble clef and a common time signature. The second staff starts at measure 4. The third staff starts at measure 7. The fourth staff starts at measure 10. The fifth staff starts at measure 13.



Largo e staccato**Allegro**



Concerto à 4 Violini No. 4

Georg Philipp Telemann (1681–1767)

TWV 40:204

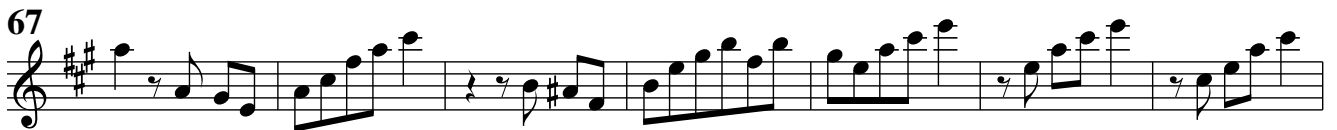
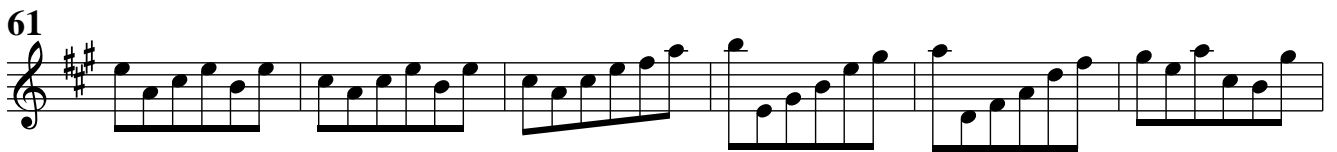
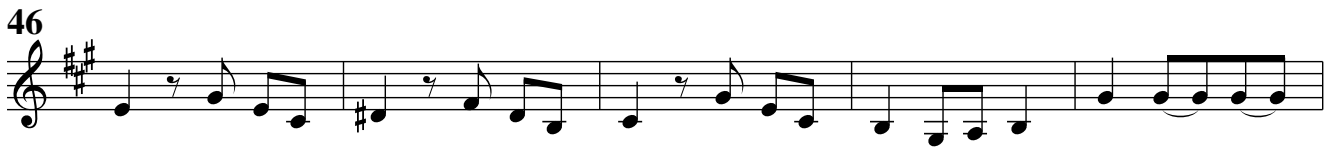
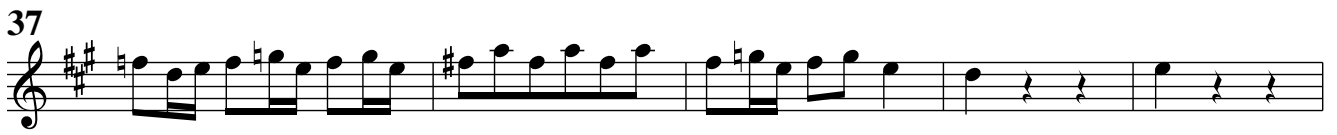
Violino 1

Grave

Musical score for Violino 1, Grave section. The score is written in treble clef, key signature of two sharps (F# and C#), and common time (C). It consists of four staves of music. The first staff begins with a treble clef, two sharps, and common time. The music is characterized by slow, sustained chords and intervals. The second staff starts at measure 8, the third at measure 15, and the fourth at measure 21. The piece concludes with a final chord in the fourth staff.

Allegro

Musical score for Violino 1, Allegro section. The score is written in treble clef, key signature of two sharps (F# and C#), and 3/4 time. It consists of five staves of music. The first staff begins with a treble clef, two sharps, and 3/4 time. The music is characterized by a fast, rhythmic melody with eighth and sixteenth notes. The second staff starts at measure 7, the third at measure 13, the fourth at measure 19, and the fifth at measure 26. The piece concludes with a final chord in the fifth staff.



Adagio

Musical score for the Adagio section, measures 1 through 7. The music is in treble clef, key of D major (two sharps), and common time (C). Measure 1 begins with a whole rest, followed by a half note D5. The melody continues with quarter and eighth notes, including a chromatic descent in measure 5. Measure numbers 4 and 7 are indicated at the start of their respective staves.

Spirituoso

Musical score for the Spiruoso section, measures 8 through 13. The music is in treble clef, key of D major, and common time. Measure 8 starts with a forte (*f*) dynamic. The section features rapid sixteenth-note passages and chords. Dynamic markings include *f*, *p*, and *f*. Measure numbers 3, 6, 8, 11, and 13 are indicated at the start of their respective staves.

Violino 1 musical score, page 13, measures 16-50. The score is written in treble clef with a key signature of two sharps (F# and C#). The dynamics are marked as follows:

- Measures 16-19: *p*, *f*, *p*, *f*
- Measures 20-22: *p*, *f*
- Measures 23-24: *p*
- Measures 25-27: *f*, *p*, *p*
- Measures 28-30: *f*
- Measures 31-34: *p*, *f*
- Measures 35-39: *p*, *f*, *p*, *f*
- Measures 40-43: *p*, *f*, *p*, *f*
- Measures 44-48: *p*, *f*, *p*, *f*
- Measures 49-50: *p*, *f*