

Sonate for Violin and Piano K 379

in G Major

Wolfgang Amadeus Mozart (1756-1791)

Adagio

Violin

8

f

p

13

18

2

f

25

6

tr

p

35

cresc.

f

6

45

p

Adagio section of the Violin part, measures 1-45. The music is in G major and 2/4 time. It features various dynamics including *f* (forte), *p* (piano), and *cresc.* (crescendo). There are also trills (*tr*) and fermatas. Measure numbers 8, 13, 18, 25, 35, and 45 are indicated. The section ends with a key signature change to G minor and a 3/4 time signature.

Allegro

Violin

a tempo

11

mf

p

68

cresc. e rall.

f

a tempo

f

80

Allegro section of the Violin part, measures 46-80. The music is in G minor and 3/4 time. It features dynamics including *mf* (mezzo-forte), *p* (piano), *cresc. e rall.* (crescendo and rallentando), and *f* (forte). There are also fermatas and a tempo change to *a tempo*. Measure numbers 11, 68, and 80 are indicated.

89

98

106

a tempo

113

131

138

145

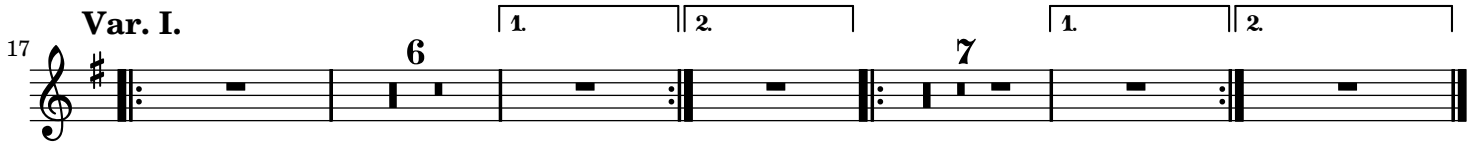
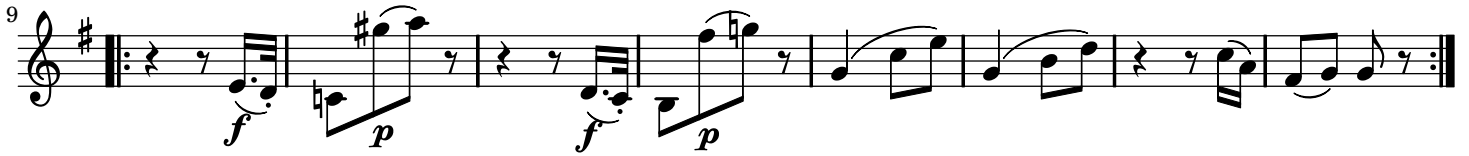
161

169

177

186

Tema. Andantino cantabile.



90

Allegretto

99

108

117

125

1. 2.

f *f* *p*

p *f*

p *f*

p