

# DEJA VU

♩ = 106

BEYONCÉ

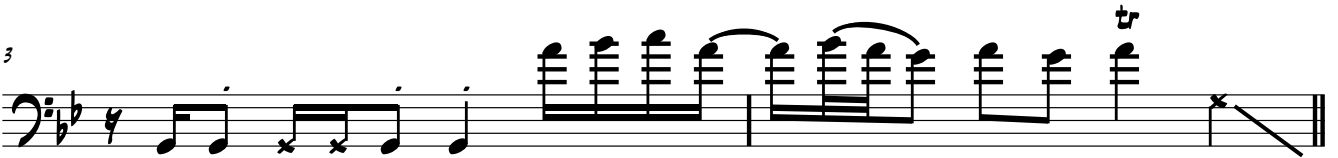
## INTRO

N.C. (Gm7)

3



3



## 5 RAP N.C. (Gm7)



7



9



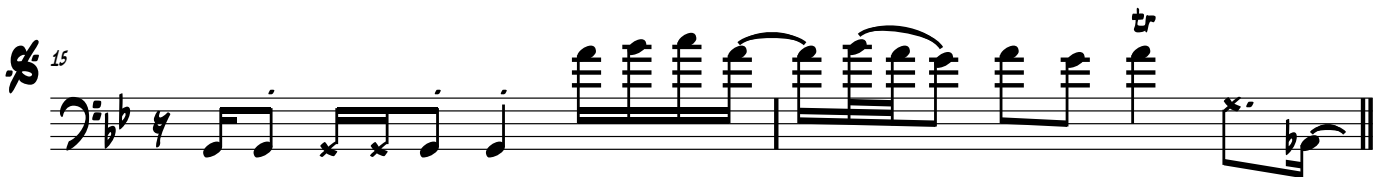
## 13 VERSE

N.C. (Gm7)

13



15



## 17 PRECHORUS

AbΔ7

GΔ7

17



AbΔ7

GΔ7

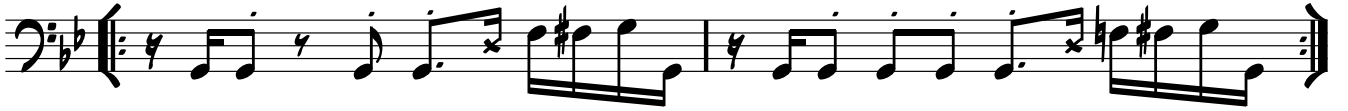
19



2 CHORUS

x3

21 N.C. (GM7)



23

To CODA



VERSE 2

25 N.C. (GM7)



27

D.S. AL CODA



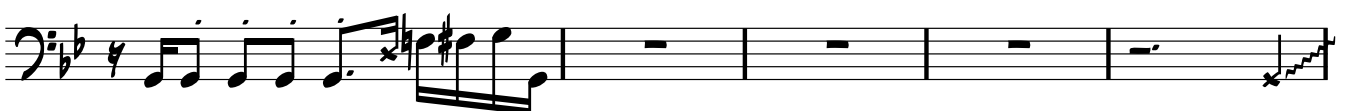
31 RAP



35



38



43



VERSE 3

45



PRECHORUS

48  $Ab\Delta 7$   $G\Delta 7$

50  $Ab\Delta 7$   $G\Delta 7$

52

56

CHORUS

60 N.C. (Gm7)

PRECHORUS

63  $Ab\Delta 7$   $G\Delta 7$

65  $Ab\Delta 7$   $G\Delta 7$

67 N.C. (Gm7)