

Concerto in F Major, Op. 10, No. 5 (RV 434)

for Flute and Strings

Flauto traverso or Recorder

Allegro ma non tanto

sempre sordini

Solo

Tutti

Solo



37 Musical staff 37-40: Treble clef, key signature of one flat. Measures 37-40 feature a complex rhythmic pattern with sixteenth and thirty-second notes, including trills (tr) and slurs.

41 Musical staff 41-44: Treble clef, key signature of one flat. Measures 41-44 continue the rhythmic pattern, with a trill (tr) in measure 42 and the instruction "Tutti" above measure 43.

45 Musical staff 45-49: Treble clef, key signature of one flat. Measures 45-49 feature a melodic line with slurs and a trill (tr) in measure 47. The instruction "Solo" is placed above measure 48.

50 Musical staff 50-53: Treble clef, key signature of one flat. Measures 50-53 show a melodic line with slurs and trills (tr) in measures 51 and 53.

54 Musical staff 54-57: Treble clef, key signature of one flat. Measures 54-57 feature a melodic line with slurs and trills (tr) in measures 55 and 57.

58 Musical staff 58-61: Treble clef, key signature of one flat. Measures 58-61 show a melodic line with slurs and trills (tr) in measures 59 and 61.

62 Musical staff 62-66: Treble clef, key signature of one flat. Measures 62-66 feature a melodic line with slurs and trills (tr) in measures 63 and 65.

67 Musical staff 67-70: Treble clef, key signature of one flat. Measures 67-70 show a melodic line with slurs and trills (tr) in measures 68 and 70.

71 Musical staff 71-74: Treble clef, key signature of one flat. Measures 71-74 feature a melodic line with slurs and trills (tr) in measures 72 and 74.

75 Musical staff 75-78: Treble clef, key signature of one flat. Measures 75-78 show a melodic line with slurs and trills (tr) in measures 76 and 78.



II.

Largo cantabile

4

7

10

13

16

19

22

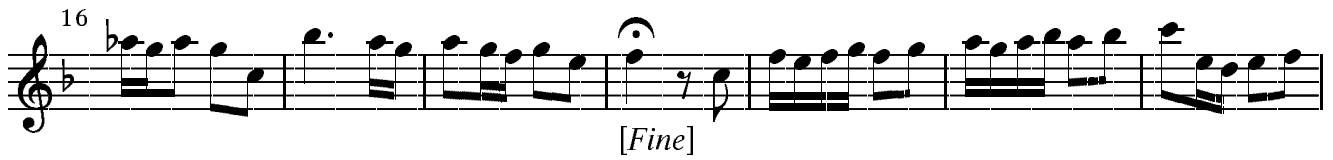
26

29



III.

Allegro



52 Solo

60 Tutti

68 Solo

76

83

[Da capo al fine]



Concerto in F Major, Op. 10, No. 5 (RV 434)

for Flute and Strings

Violino 1

Allegro ma non tanto

sempre sordini

5

9

14

18

22

26

f *p*

30

34



37

41

46

51

55

59

63

68

72

76



II.

Largo cantabile

5

9

14

19

24

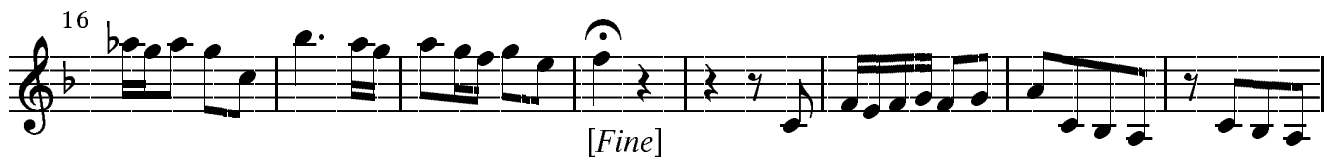
28

III.

Allegro

8



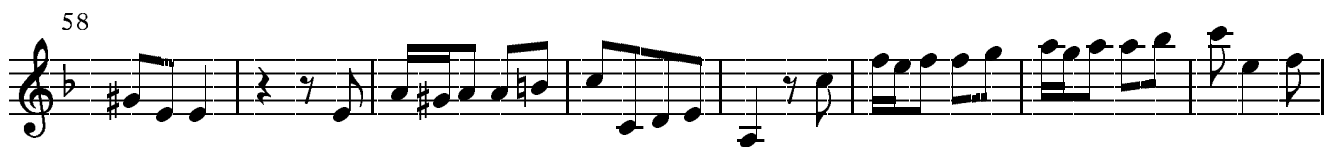
16  *[Fine]*

24 

33 

42 

50 

58 

66 

74 

83 

[Da capo al fine]



Concerto in F Major, Op. 10, No. 5 (RV 434)

for Flute and Strings

Violino 2

Allegro ma non tanto

sempre sordini

5

10

p

15

20

25

f *p* [tr]

31

36



41

f

47

p

52

59

64

69

74

sf



II.

Largo cantabile

5

9

14

19

24

28

III.

Allegro

8



16

[Fine]

25

34

42

50

58

66

74

83

[Da capo al fine]



Concerto in F Major, Op. 10, No. 5 (RV 434)
for Flute and Strings

Viola

Allegro ma non tanto

6

sempre sordini

12

30

39

46

69

74



II.

Largo cantabile

5

10

15

20

24

28

III.

Allegro

8

17

29

54

21

[Da capo al fine]



Concerto in F Major, Op. 10, No. 5 (RV 434)

for Flute and Strings

Violoncello, Basso continuo

Allegro ma non tanto

6 5 6 9 8 6 5 6 5 4 3 5 6 7 4 3

8

Tasto solo 6 5 4 3 7 5 7 4

28

6 6 4 6 6 5 4 4 6 6 5 6 # 6 6

36

6 5 6 4 # 7 # # 6 9 8 9 8 9 8 # # Tasto solo

46

4 # 7 6 5 6

72

9 8 6 5 6 5 5 6 7 4 3 4 3 Tasto solo 4 3



II.

Largo cantabile

5 (7) (6) (5) $\frac{6}{5}$ # 6 6 \flat 6 \sharp # 6 \flat

10 $\frac{6}{5}$ 7 4 # (6)

15 $\frac{6}{5}$ 4 # $\frac{6}{5}$ 6 # 6 #

20 $\frac{6}{5}$ 4 # 6 # 6 #

24 6 4 3 6 \flat # 6 \flat 6 \sharp

28 6 6 \flat 6 \sharp # #

$\frac{6}{5}$ # 6 6 \flat 6 \sharp # 6 \flat $\frac{6}{5}$ 7 4 #

III.

Allegro

8 $\frac{6}{5}$

17 $\frac{6}{5}$ 6 \flat 5 6 \flat 5 4 3 4 3

54 7 [Fine] # # # # # $\frac{6}{5}$ #

9 21 [Da capo al fine] $\frac{6}{5}$

