

Klarinettenkonzert A-Dur

Solo-Klarinette in A

KV 622

W.A. Mozart

Allegro

56 *p*

61

65

68

72 *tr*

75 *2*

81 *3* *3* *3* *3*

84

88

92 *3*

96

Musical score for KV622, page 2, measures 100-140. The score is written in treble clef and features a variety of rhythmic patterns and articulations.

Measures 100-103: Melodic line with slurs and a key signature change to one sharp (F#).

Measures 104-106: Melodic line with triplets and a key signature change to two sharps (F#, C#).

Measures 107-109: Melodic line with slurs and a key signature change to one sharp (F#).

Measures 110-111: Melodic line with slurs and a key signature change to two sharps (F#, C#).

Measures 112-115: Melodic line with slurs and a key signature change to one sharp (F#).

Measures 116-119: Melodic line with slurs and a key signature change to two sharps (F#, C#).

Measures 120-123: Melodic line with slurs and a key signature change to one sharp (F#).

Measures 124-126: Melodic line with triplets and a key signature change to two sharps (F#, C#).

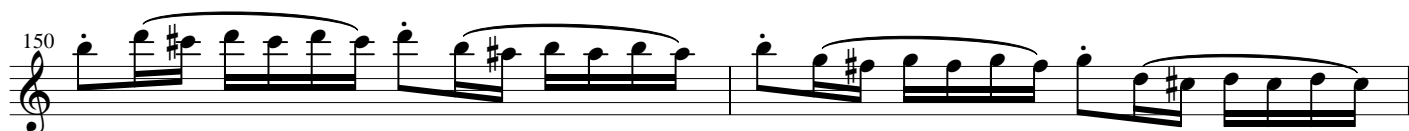
Measures 127-131: Melodic line with slurs and a key signature change to one sharp (F#).

Measures 132-135: Melodic line with slurs and a key signature change to two sharps (F#, C#).

Measures 136-137: Melodic line with slurs and a key signature change to one sharp (F#).

Measures 138-139: Melodic line with slurs and a key signature change to two sharps (F#, C#).

Measures 140: Melodic line with slurs and a key signature change to one sharp (F#).



Musical score for KV622, page 5, measures 272-313. The score is written in treble clef and features various musical notations including slurs, ties, and triplets.

Measures 272-276: Melodic line with slurs and ties. Measure 275 has a flat sign (b) above the staff.

Measures 277-280: Melodic line with slurs and ties. Measure 278 has a flat sign (b) above the staff.

Measures 281-283: Melodic line with slurs and ties. Measure 282 has a flat sign (b) above the staff.

Measures 284-287: Melodic line with slurs and ties. Measure 285 has a flat sign (b) above the staff.

Measures 288-290: Melodic line with slurs and ties. Measure 289 has a sharp sign (#) above the staff.

Measures 291-293: Melodic line with slurs and ties. Measure 292 has a sharp sign (#) above the staff.

Measures 294-296: Melodic line with slurs and ties. Measure 295 has a sharp sign (#) above the staff.

Measures 297-298: Melodic line with slurs and ties. Measure 297 has a sharp sign (#) above the staff.

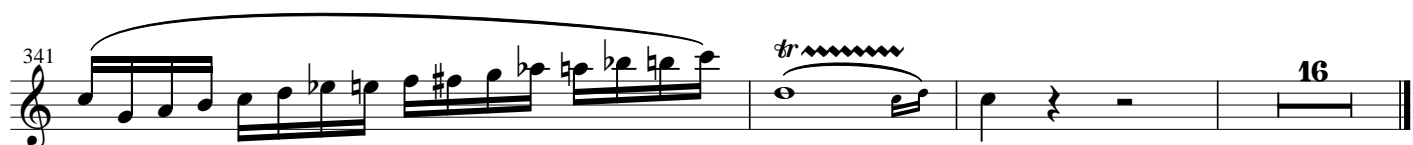
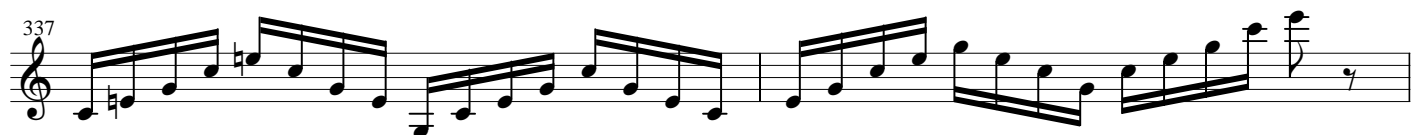
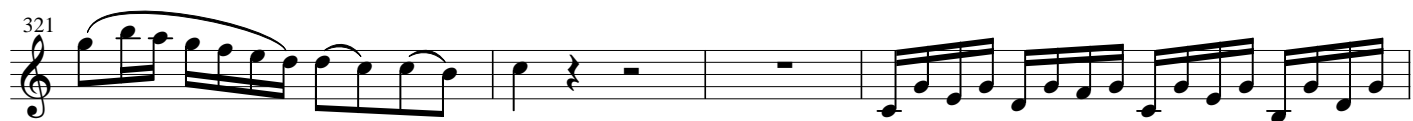
Measures 299-301: Melodic line with slurs and ties. Measure 300 has a sharp sign (#) above the staff.

Measures 302-305: Melodic line with slurs and ties. Measure 303 has a sharp sign (#) above the staff.

Measures 306-309: Melodic line with slurs and ties. Measure 307 has a sharp sign (#) above the staff.

Measures 310-312: Melodic line with slurs and ties. Measure 310 has a trill (tr) above the staff. Measures 311 and 312 have triplets (3) below the staff.

Measures 313: Melodic line with slurs and ties. Measure 313 has a sharp sign (#) above the staff.



Adagio

8

17

33

39

43

48

53

56

64

74

95

99

103

f

tr

6

6

6

6

6

6

6

6

7

7

6

3

3

3

3

3

6

Rondo Allegro

6

17

21

25

30

38

45

51

60

64

70

tr

5

5

4

Musical score for KV622, page 9, measures 78-153. The score is written in treble clef and consists of 11 staves of music. The key signature is one flat (B-flat major or D minor). The time signature is not explicitly shown but appears to be 4/4 based on the notation. The score includes various musical notations such as slurs, ties, and trills. A measure rest of 15 measures is indicated between measures 120 and 140.

Measures 78-83: Melodic line with slurs and ties.

Measures 84-87: Rapid sixteenth-note passages.

Measures 88-91: Rapid sixteenth-note passages.

Measures 92-96: Melodic line with slurs and ties.

Measures 97-101: Melodic line with a trill in measure 97 and rests.

Measures 102-107: Melodic line with rests and ties.

Measures 108-114: Rapid sixteenth-note passages.

Measures 115-119: Rapid sixteenth-note passages.

Measures 120-139: Melodic line with slurs and ties, including a 15-measure rest.

Measures 140-145: Melodic line with slurs and ties.

Measures 146-152: Melodic line with slurs and ties.

Measures 153: Melodic line with slurs and ties.



Musical score for KV622, page 11, measures 223-283. The score is written in treble clef and consists of ten staves of music. The key signature has one sharp (F#). The tempo is marked 'Allegretto' and the dynamics include 'f' (forte) and '3' (triplets). The music features a variety of rhythmic patterns, including eighth and sixteenth notes, and rests. The first staff (223) begins with a melodic line. The second staff (227) continues with a similar melodic line. The third staff (230) features a more complex rhythmic pattern. The fourth staff (235) has a similar pattern to the third. The fifth staff (241) features a melodic line with a triplet. The sixth staff (248) features a melodic line with a triplet. The seventh staff (253) features a melodic line with a triplet and a forte dynamic marking. The eighth staff (264) features a melodic line with a triplet. The ninth staff (268) features a melodic line with a triplet. The tenth staff (272) features a melodic line with a triplet. The eleventh staff (277) features a melodic line with a triplet. The twelfth staff (283) features a melodic line with a triplet.

