

Violin I

Because Of You

Kelly Clarkson

$\text{♩} = 70$

p

5

mp

11

16

22

mf

28

34

39

45

mp

51

mf

57

f

63

69

ff

74

79

84

mf

89

mp *rit.* *p*

Violin II

Because Of You

Kelly Clarkson

$\text{♩} = 70$
p

5
mp

11

17

23
mf

29

35

41
mp

47


53
mf *f*

Because of You
Vln. I - p. 2

59



64



70

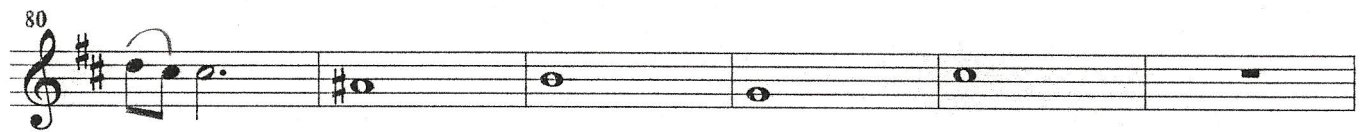
ff



75

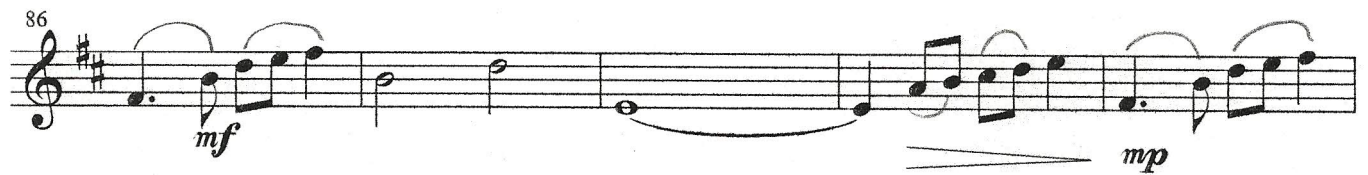


80



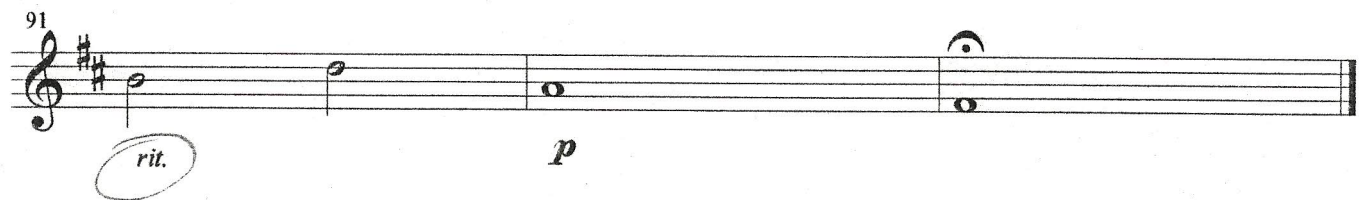
86

mf *mp*



91

rit. *p*



Viola

Because Of You

Kelly Clarkson

$\text{♩} = 70$

p

5

mp

11

17

23

mf

29

35

41

47

mp

53

mf *f*

59

Musical staff 59, bass clef, 3/4 time signature. The staff contains a sequence of eighth and quarter notes with slurs. A hairpin crescendo is positioned below the staff, starting under the first measure and ending under the second measure.

65

Musical staff 65, bass clef, 3/4 time signature. The staff contains a sequence of eighth and quarter notes with slurs. A hairpin crescendo is positioned below the staff, starting under the first measure and ending under the second measure. A circled key signature change to two sharps (F# and C#) is located below the staff, with the dynamic marking *ff* below it.

71

Musical staff 71, bass clef, 3/4 time signature. The staff contains a sequence of eighth and quarter notes with slurs. The key signature is two sharps (F# and C#).

77

Musical staff 77, bass clef, 3/4 time signature. The staff contains a sequence of eighth and quarter notes with slurs. The key signature is two sharps (F# and C#).

83

Musical staff 83, bass clef, 3/4 time signature. The staff contains a sequence of eighth and quarter notes with slurs. The key signature is two sharps (F# and C#). The dynamic marking *mf* is positioned below the staff.

89

Musical staff 89, bass clef, 3/4 time signature. The staff contains a sequence of eighth and quarter notes with slurs. A hairpin crescendo is positioned below the staff, starting under the first measure and ending under the second measure. The dynamic marking *mp* is below the first measure, *rit.* (circled) is below the second measure, and *p* is below the third measure.

Cello

Because Of You

Kelly Clarkson

$\text{♩} = 70$

p

5

mp

11

17

23

mf

29

35

41

mp

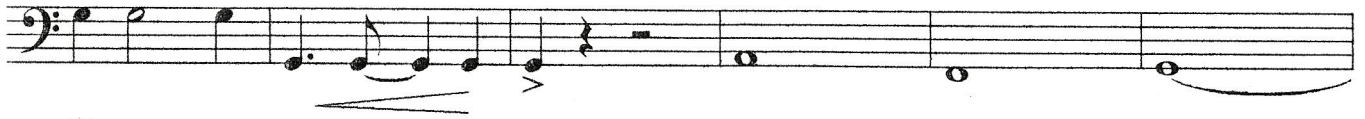
47

53

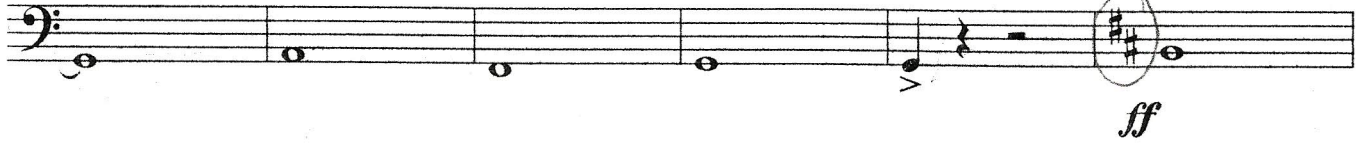
mf *f*

Handwritten annotations: *1.* above measure 35, *2.* above measure 41, and a bracketed section from measure 41 to 47.

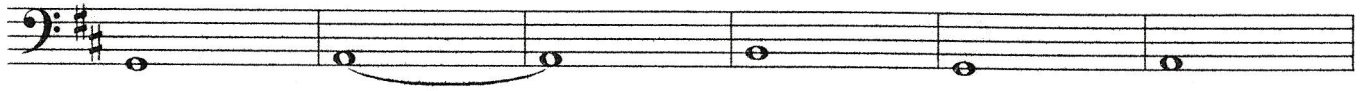
59



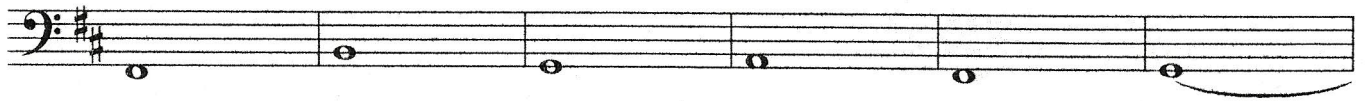
65



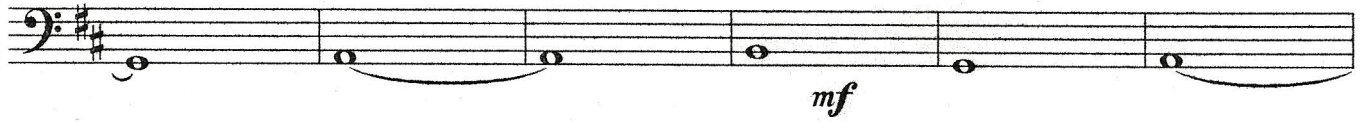
71



77



83



89

