

Op. 6 VIII. Concerto Grosso

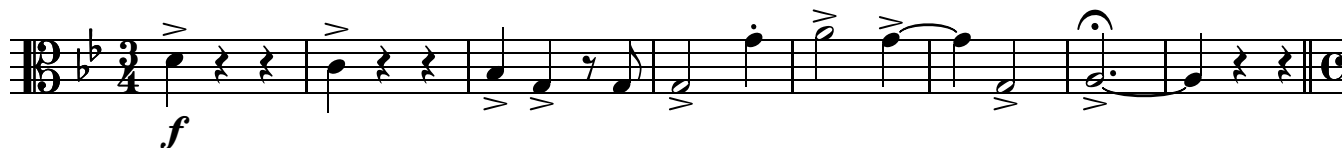
Per la notte di Natale

ARCANGELO CORELLI
arr. I. Bailey-Mortimer

Viola

1.

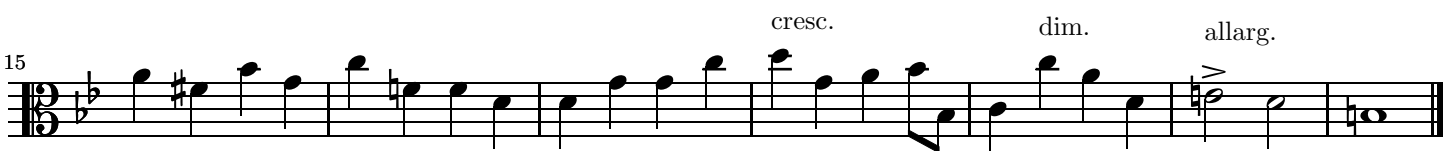
Vivace



Grave

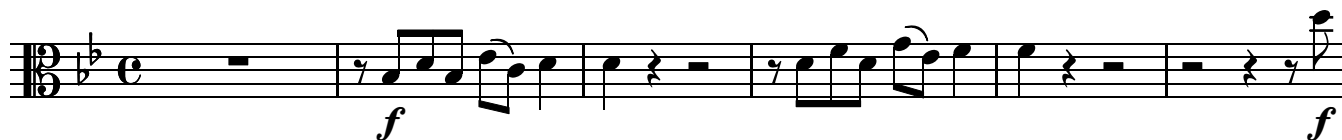


15



2.

Allegro



7



15



22



30

37

3.

Adagio

Allegro

5

11

16

Adagio

22

27

4.

Vivace

Musical score for exercise 4, titled "Vivace". The score is written in bass clef with a key signature of one flat (B-flat) and a time signature of 3/4. It consists of three staves of music. The first staff (measures 4-10) begins with a whole rest, followed by a half note G2, a dotted half note G2, and a half note G2, all marked with a forte (*f*) dynamic and an accent (>). A repeat sign follows. The second staff (measures 11-19) starts with a half note G2, a dotted half note G2, and a half note G2, all marked with a forte (*f*) dynamic and an accent (>). This is followed by a half note G2, a dotted half note G2, and a half note G2, all marked with a mezzo-forte (*mf*) dynamic. The third staff (measures 20-26) begins with a half note G2, a dotted half note G2, and a half note G2, all marked with a forte (*f*) dynamic. The tempo then changes to "poco allarg." (poco allargando), indicated by the text above the staff. The final measure of the piece is marked with a piano (*p*) dynamic.

5.

Allegro

Musical score for exercise 5, titled "Allegro". The score is written in bass clef with a key signature of one flat (B-flat) and a time signature of 3/4. It consists of five staves of music. The first staff (measures 4-7) begins with a whole rest, followed by a half note G2, a dotted half note G2, and a half note G2, all marked with a forte (*f*) dynamic. The second staff (measures 8-15) starts with a half note G2, a dotted half note G2, and a half note G2, all marked with a forte (*f*) dynamic. This is followed by a half note G2, a dotted half note G2, and a half note G2, all marked with a mezzo-piano (*mp*) dynamic. The third staff (measures 16-22) begins with a half note G2, a dotted half note G2, and a half note G2, all marked with a forte (*f*) dynamic. This is followed by a half note G2, a dotted half note G2, and a half note G2, all marked with a piano (*p*) dynamic. The fourth staff (measures 23-30) starts with a half note G2, a dotted half note G2, and a half note G2, all marked with a forte (*f*) dynamic. A repeat sign follows. The fifth staff (measures 31-37) begins with a half note G2, a dotted half note G2, and a half note G2, all marked with a forte (*f*) dynamic. This is followed by a half note G2, a dotted half note G2, and a half note G2, all marked with a forte (*f*) dynamic. The final measure of the piece is marked with a piano (*p*) dynamic.

39

47

56

64

6. PASTORALE

Largo

7

12

16

21 *poco largamente*

p *f* *p*

26 *a tempo*

f *mf* *cresc.*-----

30 *p* *mf*

36 *p* *p* *f*

43 *p* *f* *p*

48 *f*

53 *p*