

Violine

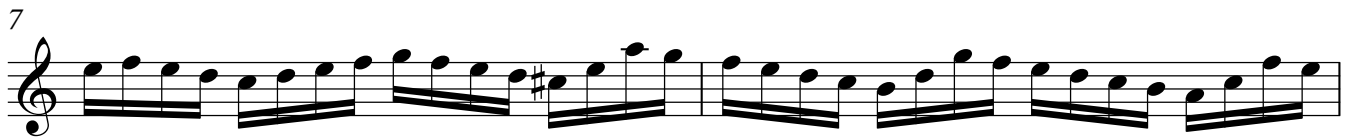
# Moto perpetuo

N. Paganini  
Op. 11

**Allegro vivace**  
*spiccato*



*dolce*



*cresc.*



**f**



Violine

2

23

25

27

29

31

33

35

37

39

41

43

1.

*cresc.*



Violine

4

67  
*cresc.*

69  
*dolce*

71

73

75  
*cresc.*

77

79

82

84

86

88  
*cresc.*

90

92 *dolce*

94

96

98 *cresc.*  
*dolce*

100

102 *cresc.*

104 *cresc.*

106

108 *decresc.* *dolce*

110

Detailed description: This page contains ten staves of violin music, numbered 90 to 110. The music is written in treble clef with a key signature of one sharp (F#). The tempo and dynamics are indicated by various markings: *dolce* at measures 92 and 98, *cresc.* (crescendo) at measures 98, 102, and 104, and *decresc.* (decrescendo) at measure 108. The piece features a complex rhythmic pattern of eighth and sixteenth notes, often beamed together. There are several trills and grace notes throughout. The dynamics range from soft (*dolce*) to a gradual increase in volume (*cresc.*) and a final decrease (*decresc.*). The notation includes various accidentals (sharps, flats, naturals) and articulation marks like accents and slurs.

Violine

6

113  *cresc.*

115  *p*

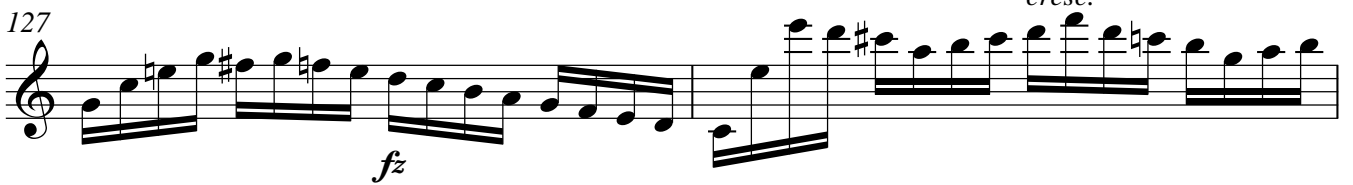
117  *cresc.*

119 

121  *cresc.*

123  *f* *p*

125 


127  *fz* *cresc.*

129 

131 

133 

135



137

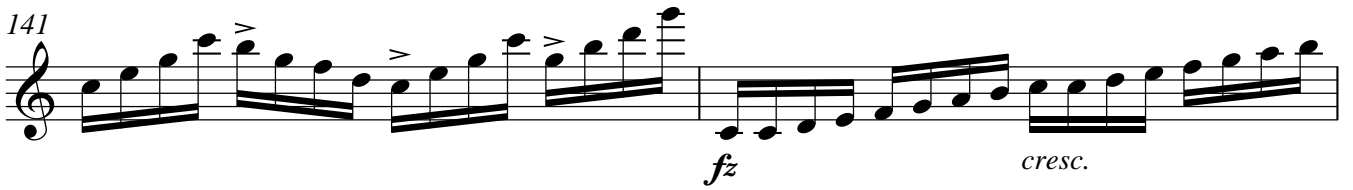


*cresc.*

139



141



*fz* *cresc.*

143

8<sup>-</sup>



145

