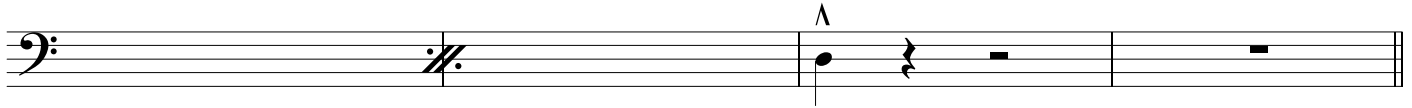


You Don't Love Me (No, No, No)

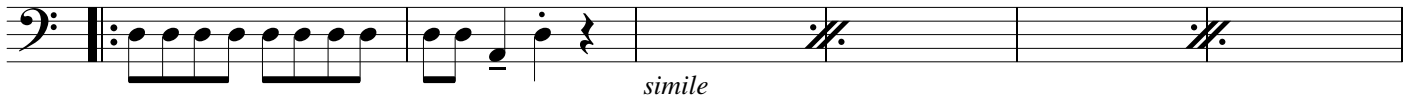
as sung by Rihanna
reggae

Willie Cobbs/Ellas McDaniel

Intro Dmin

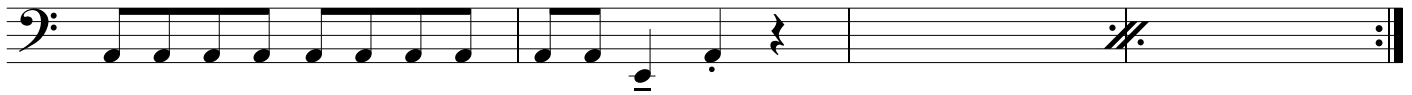


A D



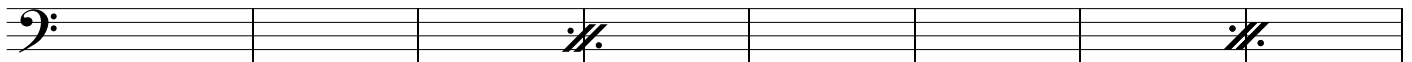
simile

Amin

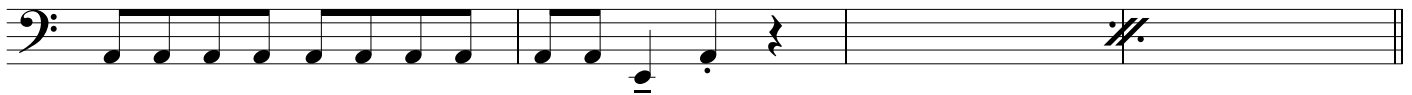


E

D



to Φ Amin

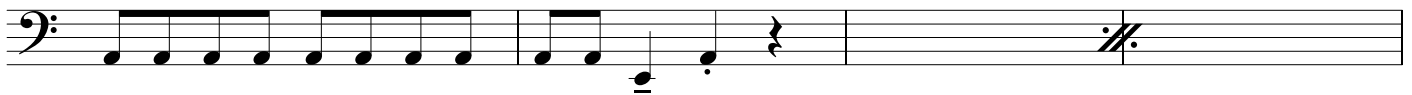


B D

Amin



Amin

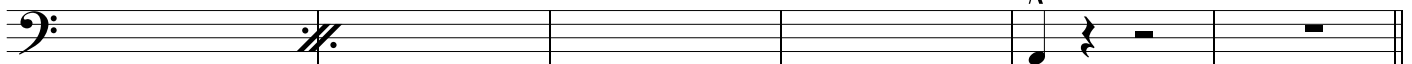


E

D

Amin

da A al segno



Φ Amin

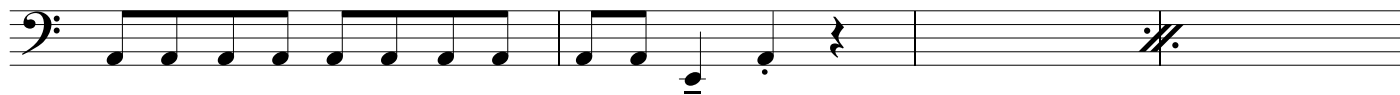


C Dmin



ragga

Amin



Dmin



Amin



B1 D

Amin



Amin

E

D

Amin



A ad libitum

