

Every breath you take

Police

1 Intr

5

9 Couplet 1

13

17

21

25 Refrain 1

29

33 Couplet 2

37

41 Pont

45

Detailed description: This page contains the bass line for the song 'Every Breath You Take' by the Police. It is written in G major (one sharp) and 4/4 time. The score is divided into sections: an 8-measure introduction, a 16-measure first couplet, a 16-measure first refrain, a 16-measure second couplet, and a 16-measure bridge. The bridge section includes a double bar line with repeat dots. The notation uses a bass clef and includes various rhythmic values such as quarter, eighth, and sixteenth notes, as well as rests and accidentals.

49



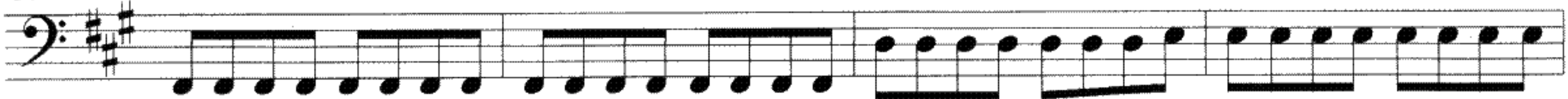
53



57



61



65

Refrain 2



69



73

Couplet 3



77



81

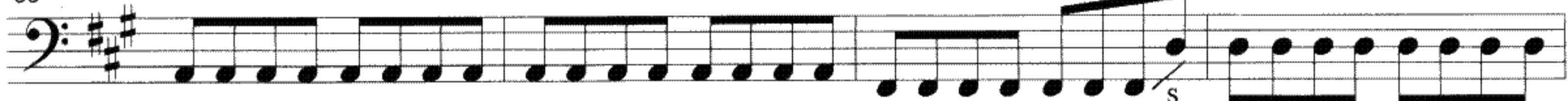


85

p h



89



93

Repeat and fade out

