

Bass

Smooth Operator

soul ♩ = 120

Sade - 'Diamond Life' (1984)

bass: Paul S. Denman

Musical notation for the first staff, starting with a 4/4 time signature and a mezzo-forte (*mf*) dynamic marking. The staff contains a few notes and rests, including a triplet of eighth notes.

sax intro

5

Musical notation for the second staff, starting at measure 5. It features a rhythmic pattern of eighth notes and quarter notes.

9

Musical notation for the third staff, starting at measure 9. It continues the rhythmic pattern from the previous staff.

verse 1

13

Musical notation for the fourth staff, starting at measure 13. It continues the rhythmic pattern from the previous staff.

17

Musical notation for the fifth staff, starting at measure 17. It continues the rhythmic pattern from the previous staff.

bridge 1

21

Musical notation for the sixth staff, starting at measure 21. It features triplet markings over groups of three notes.

25

Musical notation for the seventh staff, starting at measure 25. It features triplet markings over groups of three notes.

29

Musical notation for the eighth staff, starting at measure 29. It features triplet markings and an accent mark (^) over a note.

Bass

for educational purpose only

Smooth operator (bass)

2 chorus 1

3x's

33

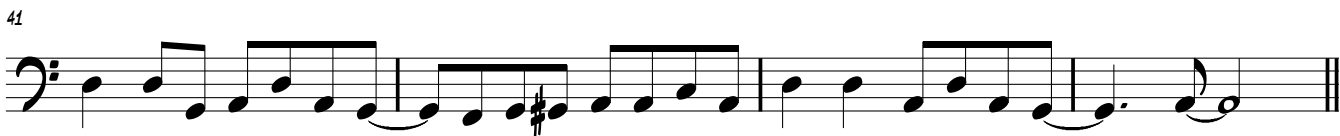


B1

37

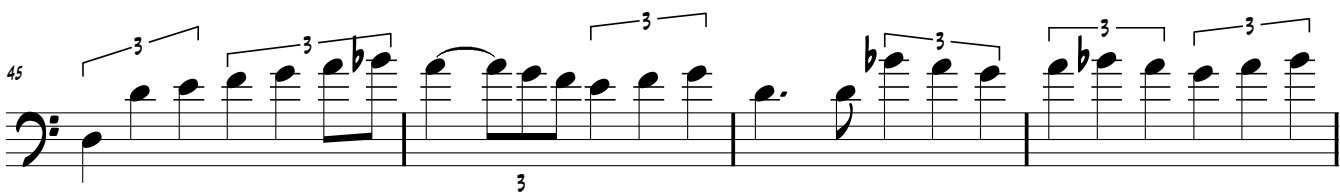


41



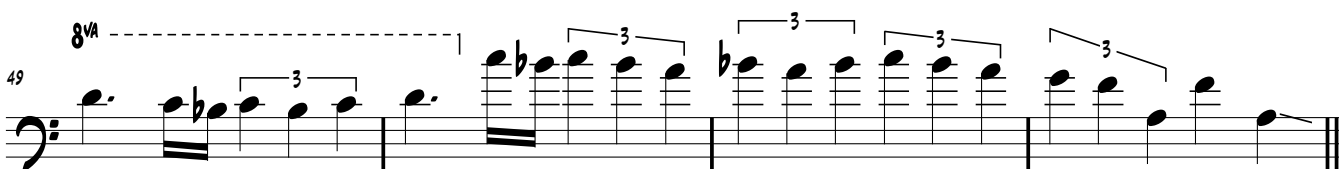
bass solo (w/modulation effect)

45



let ring-----

49



sax solo

53



verse 2

57



Bass

for educational purpose only

Smooth operator (bass)

61

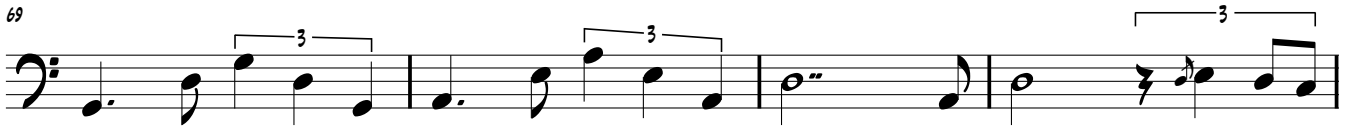


bridge 2

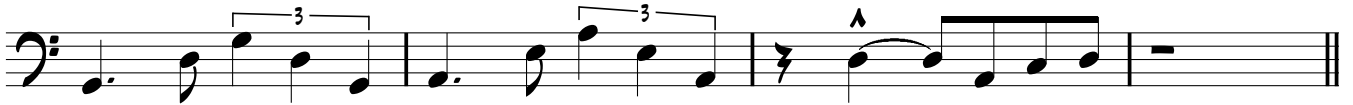
65



69



73



chorus 2

77

3x's



B2

81



chorus 3

85

repeat & fade

