

Nothing Else Matters

Metallica with Michael Kamen conducting The San Francisco Symphony Orchestra
"S&M", Original version available on "METALLICA"

Words & Music by Hetfield/Ulrich, orchestration arranged by Michael Kamen

Tune down 7 step

- ① = D# ④ = C#
- ② = A# ⑤ = G#
- ③ = F# ⑥ = D#

♩ = 74

Intro

Musical notation for the Intro section, measures 1-12. The notation is in treble clef with a key signature of one sharp (F#) and a 3/4 time signature. It features a series of chords and melodic lines, including a prominent eighth-note pattern in the lower register.

Musical notation for the 1st Verse (measures 24-35) and 2nd Verse (measures 36-35). The notation is in treble clef with a key signature of one sharp (F#) and a 3/4 time signature. It features a series of chords and melodic lines, including a prominent eighth-note pattern in the lower register.

Musical notation for the 3rd Verse section, measures 43-46. The notation is in treble clef with a key signature of one sharp (F#) and a 3/4 time signature. It features a series of chords and melodic lines, including a prominent eighth-note pattern in the lower register.

Musical notation for the Chorus section, measures 47-51. The notation is in treble clef with a key signature of one sharp (F#) and a 3/4 time signature. It features a series of chords and melodic lines, including a prominent eighth-note pattern in the lower register.

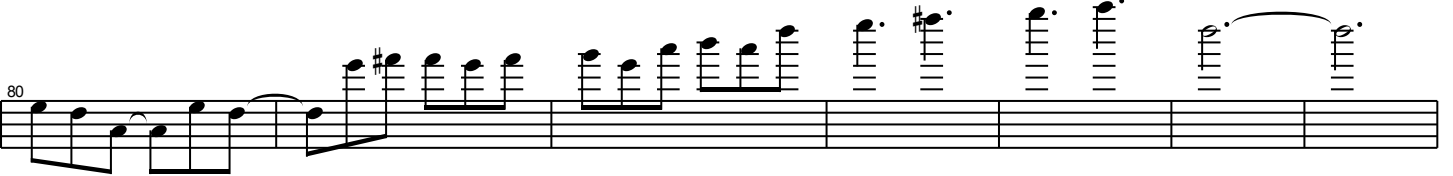
Musical notation for the 4th Verse section, measures 52-60. The notation is in treble clef with a key signature of one sharp (F#) and a 3/4 time signature. It features a series of chords and melodic lines, including a prominent eighth-note pattern in the lower register.

Musical notation for the Chorus section, measures 61-65. The notation is in treble clef with a key signature of one sharp (F#) and a 3/4 time signature. It features a series of chords and melodic lines, including a prominent eighth-note pattern in the lower register.

68



Interlude



5th Verse



6th Verse



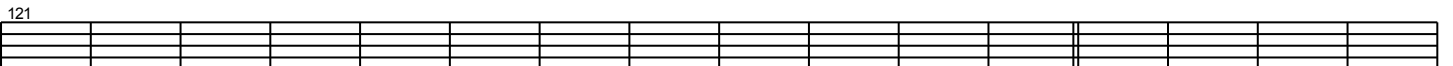
Chorus



Solo



Outro



137



150

