



# TUBA PIANO BILL BAILEY

Key signature: 2 flats (Bb, Eb), Time signature: 4/4

Chords: C, C<sup>o</sup>, C7, C7

**A** Repeat as necessary

Chords: F, F, F, F

Chords: F, A<sup>b</sup>0, Gm, C7, C7, C7

Chords: C7, C7, C7, Gm7, C7, F

**B**

Chords: F, F, F, F, F

Chords: Cm7, F7, Bb, D7, Gm, Bb, B<sup>o</sup>, F

Chords: D7, G7, C7

1. F, F

2. F, F

TRUMPET

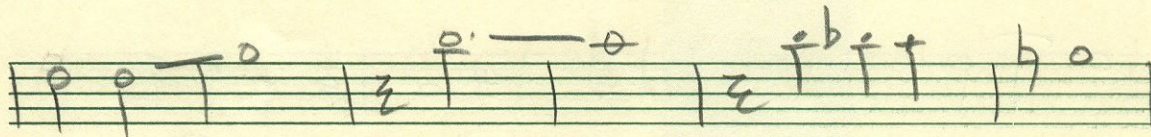
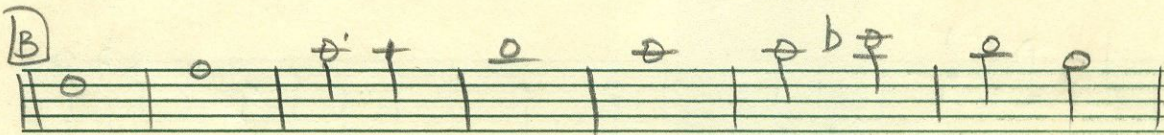
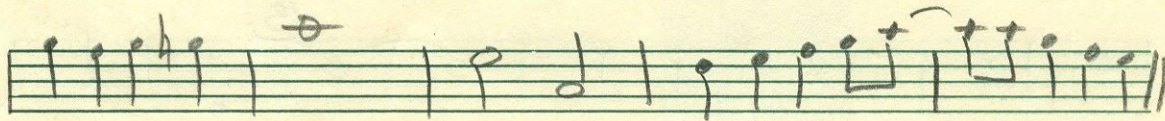
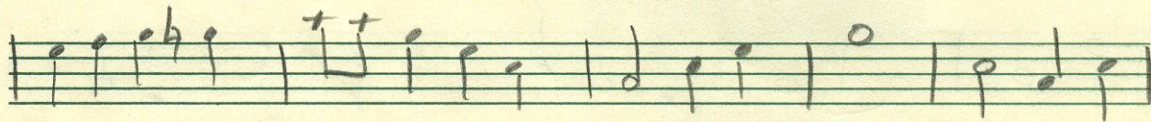
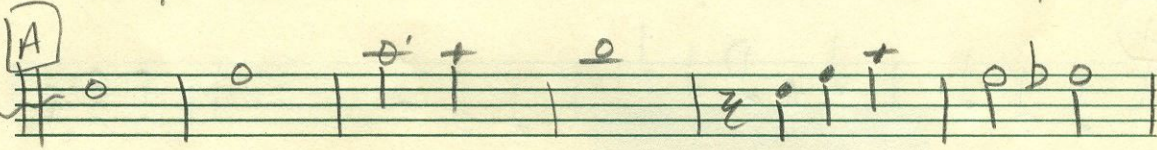
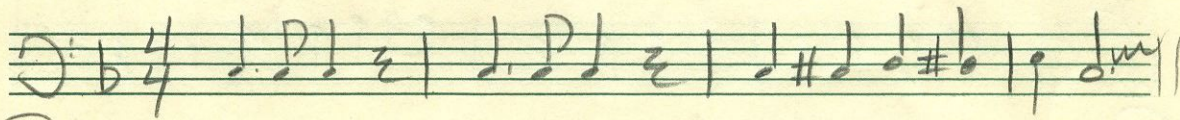
BILL BAILEY

(A)

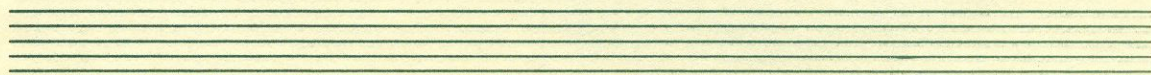
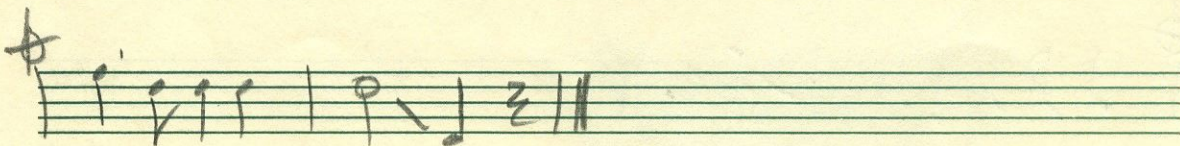
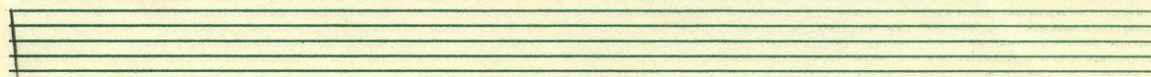
VOCAL or Solos

TROMBONE

# BILL BAILEY



VOICED OR SOLDS



TENOR

# BILL BAILEY

Handwritten musical notation on a single staff, including a treble clef, a key signature of one sharp (F#), and a 4/4 time signature. The notation consists of several measures of music with various note values and rests.

Handwritten musical notation on a single staff, starting with a circled letter 'A' in the left margin. The notation includes quarter notes, eighth notes, and rests.

Handwritten musical notation on a single staff, continuing the piece with various note values and rests.

Handwritten musical notation on a single staff, featuring a circled letter 'B' in the right margin. The notation includes quarter notes and rests.

Handwritten musical notation on a single staff, continuing the piece with various note values and rests.

Handwritten musical notation on a single staff, continuing the piece with various note values and rests.

Handwritten musical notation on a single staff, featuring a circled letter 'C' in the right margin. The notation includes quarter notes and rests.

Vocal or  
solos

Two empty musical staves.

Handwritten musical notation on a single staff, starting with a treble clef and a key signature of one sharp. The notation includes quarter notes and rests.

Two empty musical staves.

Two empty musical staves.

CLARINET

# BILL BAILEY

Handwritten musical notation on a single staff, starting with a treble clef, a key signature of one sharp (F#), and a 4/4 time signature. The notation includes quarter notes, eighth notes, and rests, with a double bar line and repeat sign at the end.

Section (A) marked with a circled 'A'. It contains a single staff of handwritten musical notation with various note values and rests.

Section (B) marked with a circled 'B'. It contains a single staff of handwritten musical notation.

Section (B) marked with a circled 'B'. It contains a single staff of handwritten musical notation.

Section of handwritten musical notation on a single staff.

Section of handwritten musical notation on a single staff.

Section of handwritten musical notation on a single staff.

Section (C) marked with a circled 'C'. It consists of a single staff with a double bar line and the handwritten text "vocal or solos" written below it.

Section of handwritten musical notation on a single staff, starting with a treble clef and a key signature of one sharp.