

WATER MUSIC

for String Quartet

G. F. HÄNDEL
(1685 - 1759)

Violin I

Air (No. 5)

Musical score for Air (No. 5) for Violin I. The piece is in G minor, 3/4 time, and consists of 24 measures. The score is written on five staves. It features a melodic line with several trills (tr) and repeat signs. The first staff contains measures 1-5, the second staff measures 6-10, the third staff measures 11-15, the fourth staff measures 17-22, and the fifth staff measures 23-24. The piece concludes with a double bar line and repeat dots.

Bourrée (No. 7)

Musical score for Bourrée (No. 7) for Violin I. The piece is in G minor, 3/4 time, and consists of 15 measures. The score is written on three staves. It features a rhythmic melody with repeat signs. The first staff contains measures 1-6, the second staff measures 7-14, and the third staff measures 15. The piece concludes with a double bar line and repeat dots.

Hornpipe (No. 8)

Musical score for Hornpipe (No. 8) for Violin I. The piece is in G minor, 3/2 time, and consists of 11 measures. The score is written on three staves. It features a rhythmic melody with repeat signs. The first staff contains measures 1-5, the second staff measures 6-10, and the third staff measures 11. The piece concludes with a double bar line and repeat dots.

Menuet (No. 12)

Musical score for Menuet (No. 12) in G major, 3/4 time. The score consists of four staves of music. The first staff begins with a treble clef, a key signature of one sharp (F#), and a 3/4 time signature. The melody features several trills (tr) and a repeat sign with first and second endings. The second staff continues the melody with a trill and a repeat sign. The third staff shows further melodic development with a trill. The fourth staff concludes the piece with a trill and a final repeat sign.

Rigaudon (No. 13)

Musical score for Rigaudon (No. 13) in G major, 2/4 time. The score consists of eight staves of music. The first staff begins with a treble clef, a key signature of one sharp (F#), and a 2/4 time signature. The melody is characterized by eighth and sixteenth notes. The second staff continues the melody. The third staff includes a repeat sign. The fourth staff continues the melody. The fifth staff includes a repeat sign and the word "Fine" below the staff. The sixth staff continues the melody with a trill. The seventh staff includes a repeat sign. The eighth staff concludes the piece with a trill and the instruction "D.C. al Fine" below the staff.

WATER MUSIC

for String Quartet

G. F. HÄNDEL
(1685 - 1759)

Violin II

Air (No. 5)

Musical score for Air (No. 5) for Violin II. The score is written in treble clef with a key signature of one flat (B-flat) and a common time signature (C). It consists of five staves of music. The first staff begins with a treble clef, a key signature of one flat, and a common time signature. The music features a series of eighth and sixteenth notes, with some rests. The second staff starts at measure 6 and includes a repeat sign. The third staff starts at measure 11. The fourth staff starts at measure 17 and includes a repeat sign. The fifth staff starts at measure 23 and ends with a double bar line and repeat dots.

Bourrée (No. 7)

Musical score for Bourrée (No. 7) for Violin II. The score is written in treble clef with a key signature of one flat (B-flat) and a common time signature (C). It consists of three staves of music. The first staff begins with a treble clef, a key signature of one flat, and a common time signature. The music features a series of eighth and sixteenth notes. The second staff starts at measure 8 and includes a repeat sign. The third staff starts at measure 15 and ends with a double bar line and repeat dots.

Hornpipe (No. 8)

Musical score for Hornpipe (No. 8) for Violin II. The score is written in treble clef with a key signature of one flat (B-flat) and a 3/2 time signature. It consists of one staff of music. The music features a series of eighth and sixteenth notes.

Musical score for Violin II, measures 7-12. The music is in G major and 3/4 time. Measure 7 starts with a treble clef and a key signature of one sharp (F#). The melody consists of eighth and quarter notes. A double bar line with repeat dots appears at the end of measure 10. The piece concludes with a double bar line and repeat dots at the end of measure 12.

Menuet (No. 12)

Musical score for Menuet (No. 12), measures 1-30. The music is in G major and 3/4 time. The melody is written on a single staff with a treble clef. It begins with a key signature of one sharp (F#). The piece features a variety of note values including eighth, quarter, and half notes. A double bar line with repeat dots is located at the end of measure 13. The piece ends with a double bar line and repeat dots at the end of measure 30.

Rigaudon (No. 13)

Musical score for Rigaudon (No. 13), measures 1-54. The music is in G major and 2/4 time. The melody is written on a single staff with a treble clef. It begins with a key signature of one sharp (F#). The piece is characterized by a lively, rhythmic melody with many eighth and sixteenth notes. A double bar line with repeat dots is located at the end of measure 9. The word "Fine" is written below the staff at the end of measure 37. The piece concludes with a double bar line and repeat dots at the end of measure 54, with the instruction "D.C. al Fine" written below the staff.

WATER MUSIC

for String Quartet

G. F. HÄNDEL
(1685 - 1759)

Viola

Air (No. 5)

Musical score for Viola, Air (No. 5). The score is written in bass clef with a key signature of one flat (B-flat) and a common time signature (C). It consists of three staves of music. The first staff begins with a double bar line and a repeat sign. The second staff is marked with a measure number '9' and begins with a repeat sign. The third staff is marked with a measure number '18' and begins with a repeat sign. The piece concludes with a double bar line and repeat sign.

Bourrée (No. 7)

Musical score for Viola, Bourrée (No. 7). The score is written in bass clef with a key signature of one flat (B-flat) and a common time signature (C). It consists of three staves of music. The first staff begins with a double bar line and a repeat sign. The second staff is marked with a measure number '8' and begins with a repeat sign. The third staff is marked with a measure number '15' and begins with a repeat sign. The piece concludes with a double bar line and repeat sign.

Hornpipe (No. 8)

Musical score for Viola, Hornpipe (No. 8). The score is written in bass clef with a key signature of one flat (B-flat) and a 3/2 time signature. It consists of a single staff of music. The piece concludes with a double bar line and repeat sign.



Menuet (No. 12)



Rigaudon (No. 13)

*D.C. al Fine*

WATER MUSIC

for String Quartet

G. F. HÄNDEL
(1685 - 1759)

Cello

Air (No. 5)

Musical score for Air (No. 5) for Cello. The score is written in bass clef with a key signature of one flat (B-flat) and a common time signature (C). It consists of three staves of music. The first staff contains measures 1 through 8. The second staff, starting with a measure rest labeled '9', contains measures 9 through 18. The third staff, starting with a measure rest labeled '19', contains measures 19 through 28. The piece concludes with a double bar line and repeat dots.

Bourrée (No. 7)

Musical score for Bourrée (No. 7) for Cello. The score is written in bass clef with a key signature of one flat (B-flat) and a common time signature (C). It consists of three staves of music. The first staff contains measures 1 through 7. The second staff, starting with a measure rest labeled '8', contains measures 8 through 14. The third staff, starting with a measure rest labeled '15', contains measures 15 through 21. The piece concludes with a double bar line and repeat dots.

Hornpipe (No. 8)

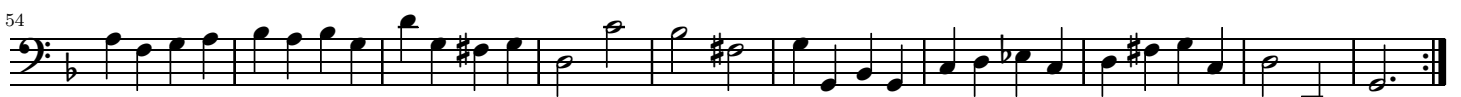
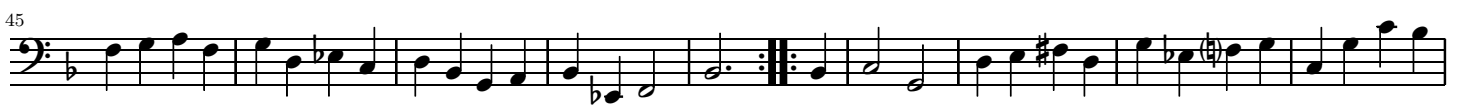
Musical score for Hornpipe (No. 8) for Cello. The score is written in bass clef with a key signature of one flat (B-flat) and a 3/2 time signature. It consists of two staves of music. The first staff contains measures 1 through 5. The second staff, starting with a measure rest labeled '6', contains measures 6 through 11. The piece concludes with a double bar line and repeat dots.



Menuet (No. 12)



Rigaudon (No. 13)



D.C. al Fine