

# Partita in A minor

Revision: Françoise Bellec

for flute alone

J.S. BACH

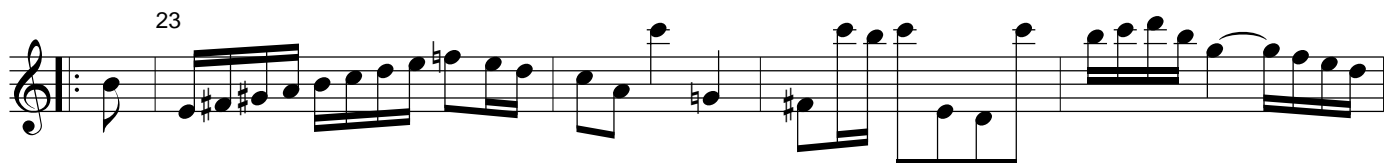
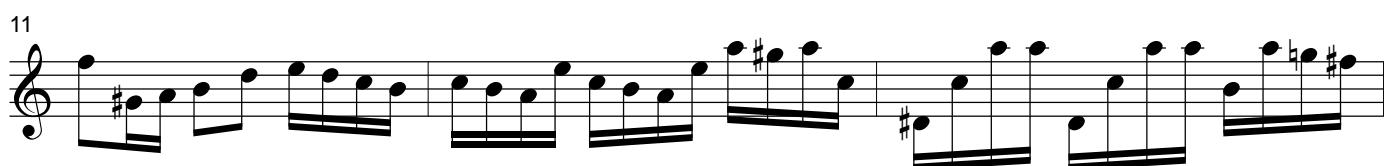
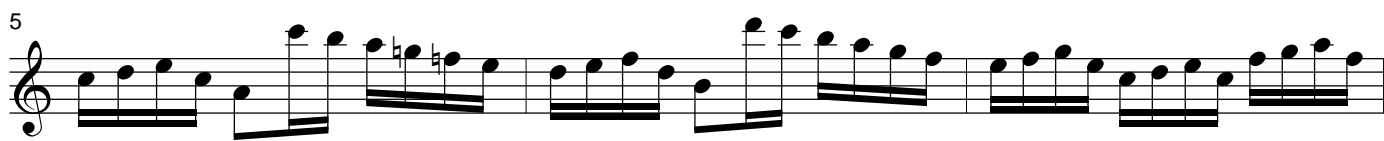
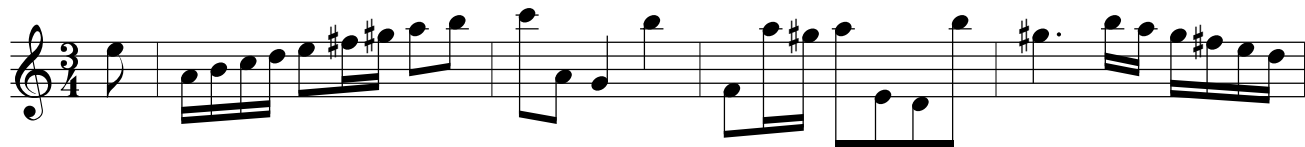
## Allemande

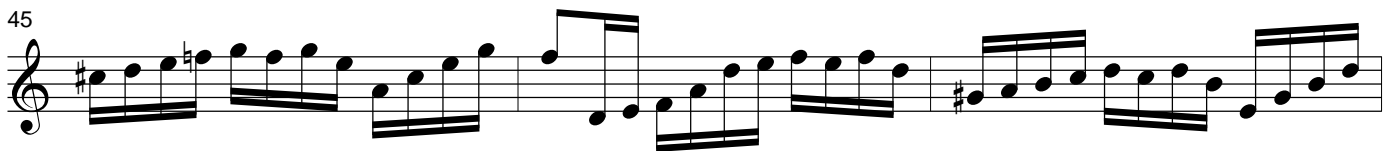
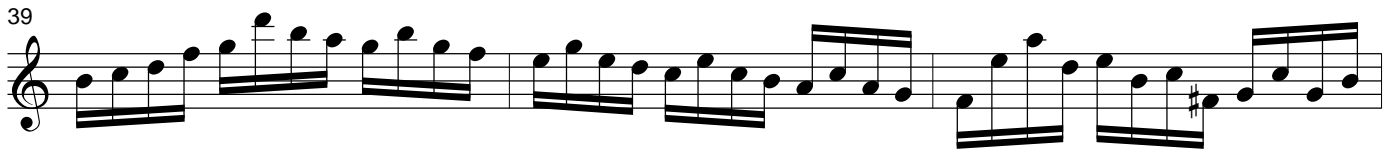
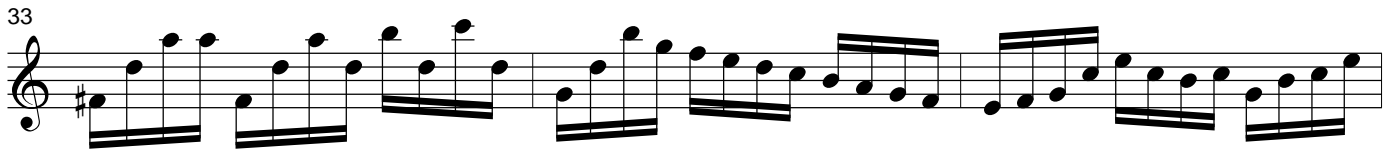
The image displays a musical score for the Allemande in A minor, BWV 1013, by J.S. Bach, arranged for flute solo. The score is written in treble clef with a common time signature (C). It consists of 24 measures, organized into 12 staves. The first staff begins with a treble clef, a common time signature, and a key signature of one sharp (F#). The music is characterized by a steady eighth-note rhythm. A first ending bracket spans measures 19 and 20, with a first ending (1.) leading to measure 21 and a second ending (2.) leading to measure 22. The score concludes with a final cadence in measure 24.

Musical score for BWV 1013, measures 23-45. The score is written in treble clef and consists of ten staves of music. The key signature is one sharp (F#), and the time signature is 3/8. The music features a complex rhythmic pattern with many sixteenth and thirty-second notes. The notation includes various accidentals (sharps, flats, naturals) and a repeat sign at the end of the piece.

Measures 23-45 are shown, with measure numbers indicated at the beginning of each staff. The score concludes with a repeat sign at the end of measure 45.

## Courante





## Sarabande

7

12

17

23

27

33

39

43

## Bourrée Anglaise

5

Musical score for BWV 1013, page 7, measures 10-72. The score is written in treble clef and consists of ten staves of music. The key signature is one sharp (F#), and the time signature is 4/4. The music features a complex rhythmic pattern with many sixteenth and thirty-second notes. A flat (b) is placed above the staff at measure 12. A repeat sign is present at the beginning of measure 21. The score ends with a double bar line and repeat dots at the end of measure 72.

10

15

21

26

31

36

41

46

51

56

61

66