

# Sweet Child O' Mine

Violin II

Henry Ling

Violin II score for "Sweet Child O' Mine" by Guns N' Roses. The score is in G major (one sharp) and 4/4 time. It consists of seven staves of music. The first staff begins with a measure rest of 6 measures, followed by a section labeled 'A' which contains a series of chords. The second staff starts at measure 10 and features a melodic line with eighth and quarter notes. The third staff starts at measure 15 and continues the melodic line. The fourth staff starts at measure 20 and continues the melodic line. The fifth staff starts at measure 25 and is labeled 'B', featuring a melodic line with eighth notes and a fermata. The sixth staff starts at measure 30 and continues the melodic line. The seventh staff starts at measure 36 and continues the melodic line.

## Violin II

41 **C**



48 **D**



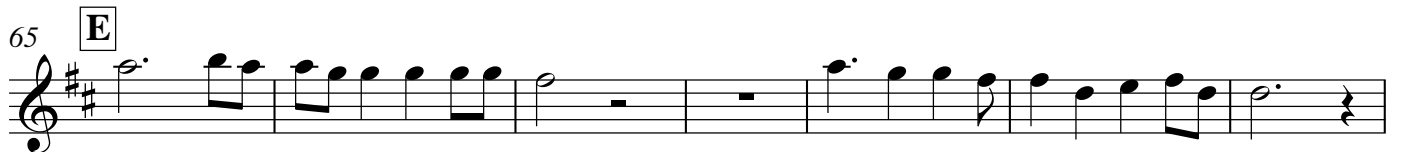
54



59



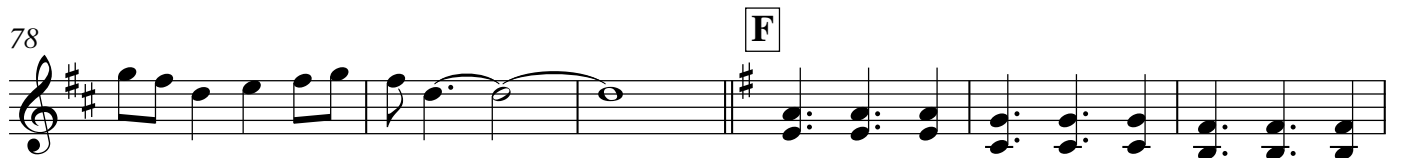
65 **E**



72



78 **F**



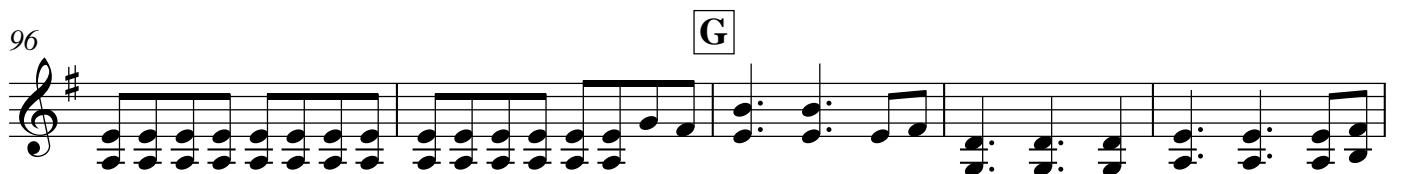
84



90



96 **G**



101



107

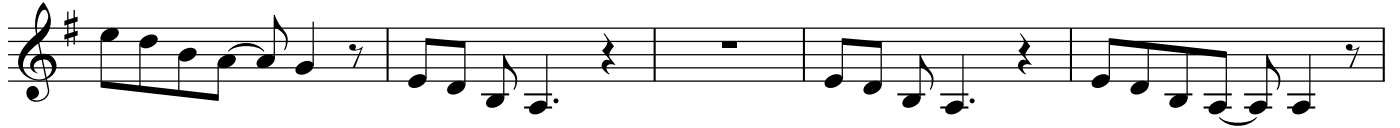


113

**H**



119



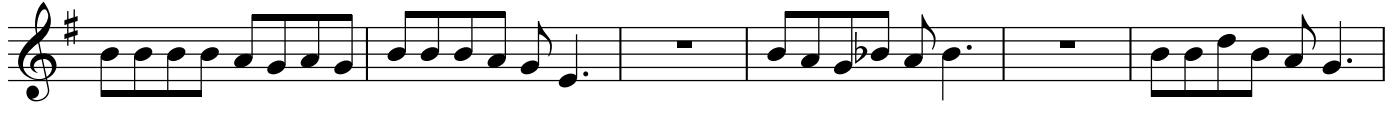
124



130



135



141



145

