

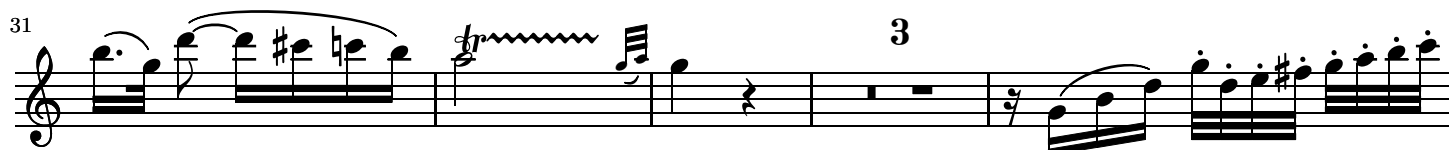
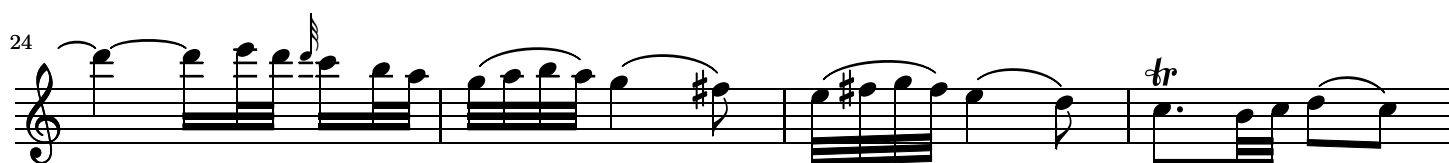
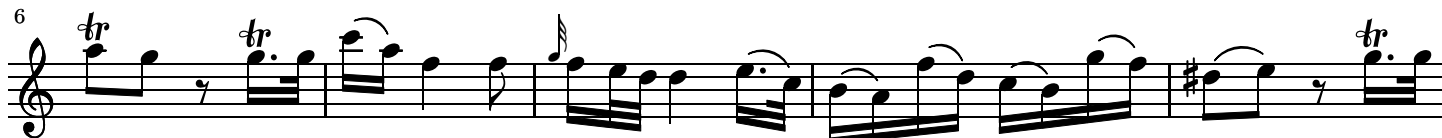
Andante in C Major K. 315

for Flute and Orchestra

Andante.

WOLFGANG AMADEUS MOZART (1756-1791)

Flauto traverso
principale.



38

44

49

53

57

61

65

68

71

74



79



83



86



95



The image displays five staves of musical notation in treble clef. The first staff (measures 74-78) features a melodic line with slurs and a key signature change to one sharp. The second staff (measures 79-82) includes sixteenth-note runs and a trill. The third staff (measures 83-85) continues with sixteenth-note patterns and a key signature change to two sharps. The fourth staff (measures 86-94) contains a trill, a fermata, a measure with a '4' above it, and another trill. The fifth staff (measures 95-98) concludes with more sixteenth-note runs and trills.