

Witchcraft

Music by Cy Coleman
Lyric by Carolyn LeighMed. Swing $F6$

A $G\#07$

Those fin - gers in my hair, - That sly, come - hith - er stare -

$GMI7$ C^9sus $FMA7$ $(F7)$

that strips my con - science bare, - It's witch - craft. -

$BbMA7$ $Eb9$

And I've got no de - fense for it, The heat is too in - tense for it,

$Ab6$ $G7(\#5)$ $C7$

What good would com - mon sense for it do? 'Cause it's

B $FMA9$ (C^9sus/F) $Bb13$

witch - craft, Wick - ed witch - craft, And al -

$FMA9$ $BMI7(b5)$ $E7$

though I know it's strict - ly ta - boo,

AMI F/A $AMI6$ F/A AMI

When you a - rouse the need in me, My heart says, "Yes, in - deed" in me,

GMI Eb/G $GMI7$ $C7$

"Pro - ceed with what you're lead - in' me to."

C $F6$ $G\#07$

It's such an an - cient pitch, - But one I would - n't switch, -

$GMI7$ C^9sus $(C7)$ $F6$ $(GMI7 C7)$

'Cause there's no nic - er witch than you.

Head is played in 2 (letter B may be in 4); solos in 4.

WITCHCRAFT

CAROLYN LEIGH
CY COLEMAN

Medium Swing

Chord symbols for the first staff: F Δ7, A \flat °7

Chord symbols for the second staff: G m7, C7, F Δ7, C m7, F7

Chord symbols for the third staff: B \flat Δ7, B \flat m7

Chord symbols for the fourth staff: A \flat Δ7, G7#9, C7, G m7, C7

Chord symbols for the fifth staff: F Δ7, B \flat 9

Chord symbols for the sixth staff: F Δ7, B m7 \flat 5, E7 \flat 9

Chord symbols for the seventh staff: A m, A m+5, A m6, A m+5

Chord symbols for the eighth staff: G m, G m+5, G m7, C7

Chord symbols for the ninth staff: F Δ7, A \flat °7

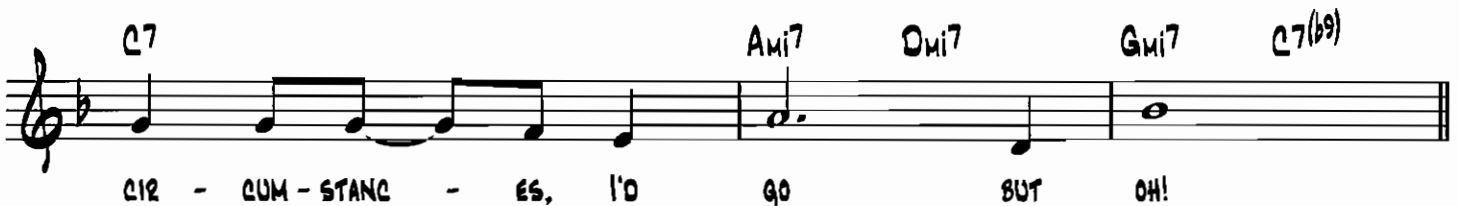
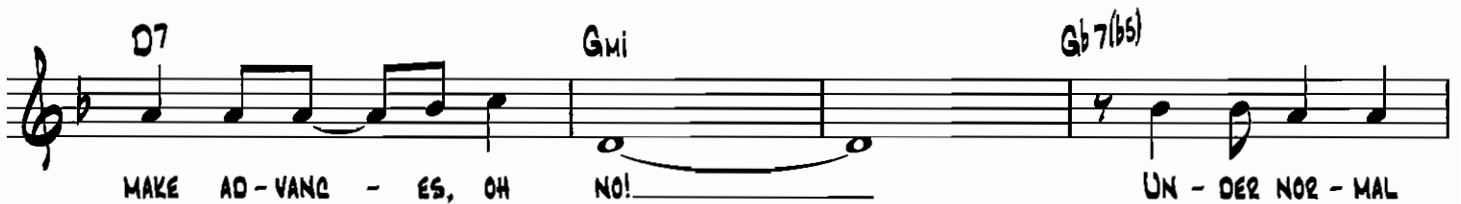
Chord symbols for the tenth staff: G m7, C7, F Δ7

WITCHCRAFT

LYRIC BY CAROLYN LEIGH
MUSIC BY CY COLEMAN

MEDIUM BOUNCE

E \flat 7/F



F
FMA7

G#o7
Ab7

Gmi7
Gmi7

Gmi7/C
C7

F
FMA7

Cmi7

F7

Bb
BbMA7

Bbmi
Bbmi7

E7

Fmi/Ab
AbMA7

G7(#5)

CMA7
Gmi7

C7

FMA9
FMA7

F

C9/F
Bb7

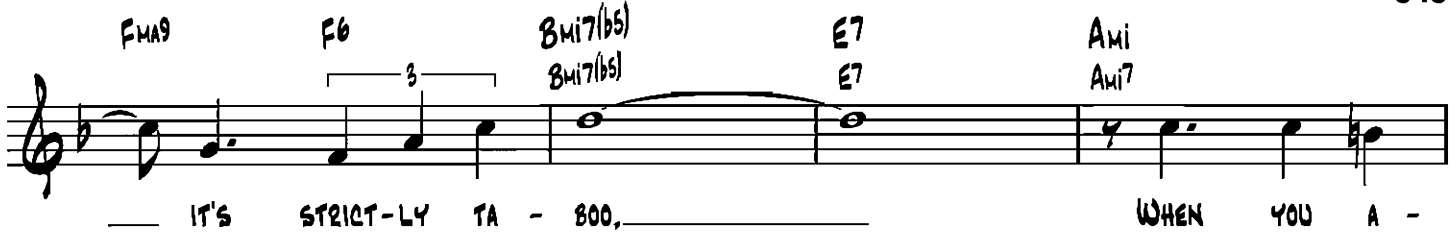
C7/F

FMA9
FMA7

F6/9

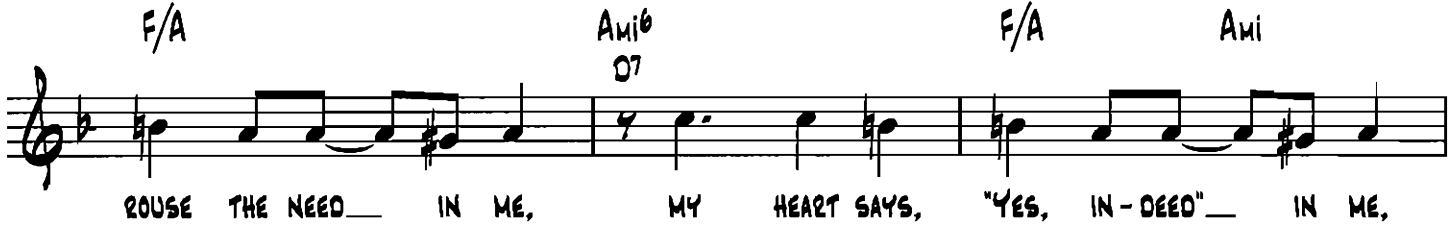
THOSE FIN - GERS IN MY HAIR; THAT SLY, COME -
 HITH - ER STARE THAT STRIPS MY CON - SCIENCE BARE, IT'S
 WITCH - CRAFT AND I'VE GOT
 NO DE - FENSE FOR IT, THE HEAT IS TOO IN - TENSE FOR IT;
 WHAT GOOD WOULD COM - MON SENSE FOR IT DO?
 'CAUSE IT'S WITCH - CRAFT! WICK - ED
 WITCH - CRAFT AND AL - THOUGH I KNOW

FMA9 F6 Bmi7(b5) E7 Ami



IT'S STRICT-LY TA - BOO, WHEN YOU A -

F/A Ami6 D7 F/A Ami



ROUSE THE NEED IN ME, MY HEART SAYS, "YES, IN-DEED" IN ME,

Gmi Gmi7 Eb/G Gmi7 Eb7



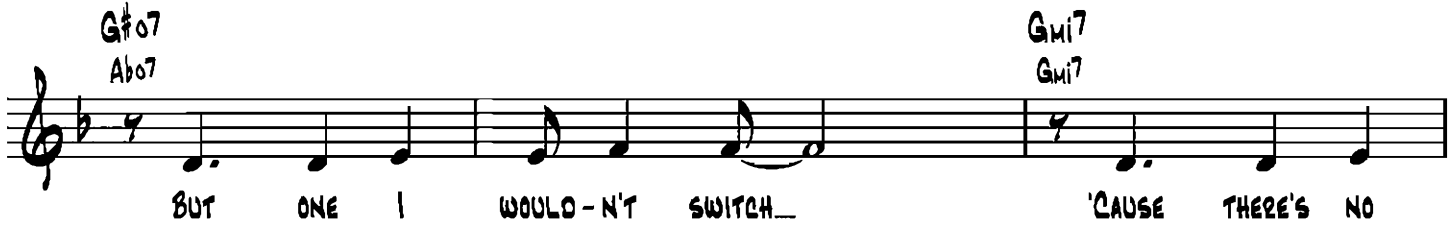
"PRO - CEED WITH WHAT YOU'RE LEAD - IN' ME TO!"

Gmi7 C7 F#6 F6 C7 FMA7



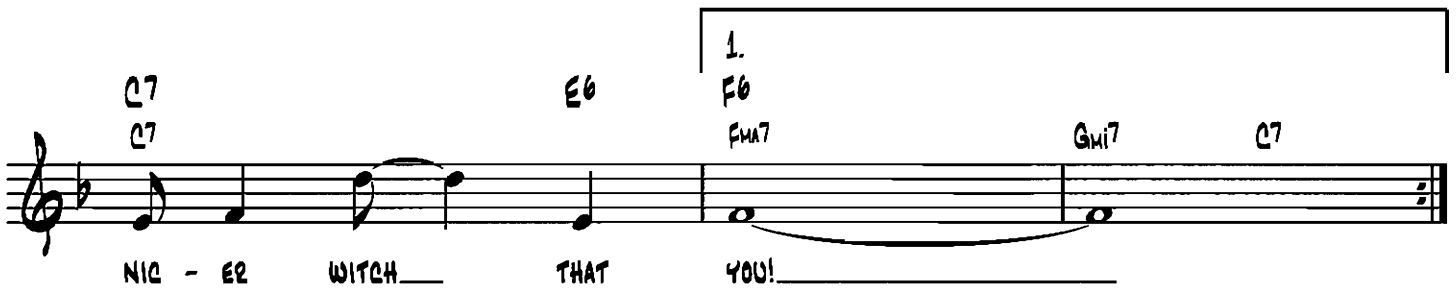
IT'S SUCH AN AN - CIENT PITCH

G#f07 Ab07 Gmi7 Gmi7



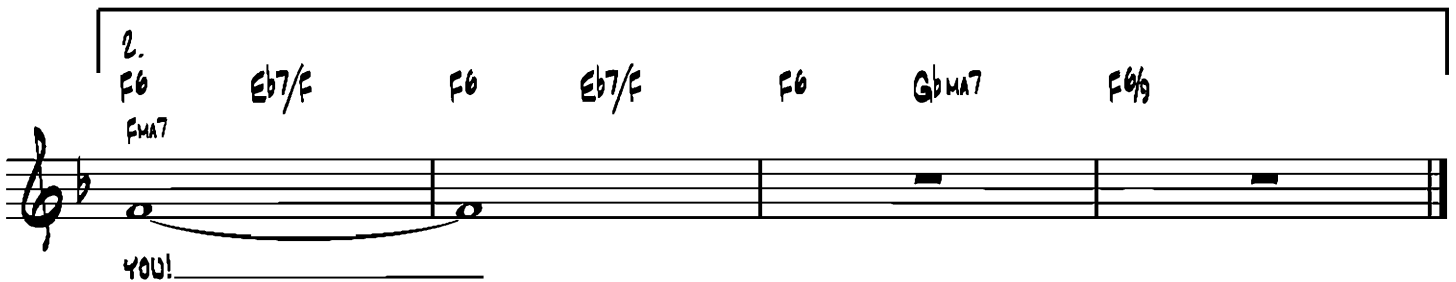
BUT ONE I WOULD - N'T SWITCH 'CAUSE THERE'S NO

C7 C7 Eb Gmi7 C7



NIC - ER WITCH THAT YOU!

1. F6 FMA7 Eb7/E F6 Eb7/E F6 GbMA7 F6/9



YOU!