

Flute

Eu sei que vou te amar.

♩=90

trill Solo

7

12

19

24

29

34

Eu sei que vou te amar.

Clarinet in B \flat

$\text{♩} = 90$

7

14

21

28

33

f

Eu sei que vou te amar.

Piano

♩=90

1 F G#° Gm7 C7

5 F Gm7 C7 Fmaj7 Ab°

9 Gm7 C7 Am7 Dm Bbmaj7

14 Eb7 Am Dm7 Gm7 C7 F

20 D7 Gm7 C5# Fmaj7

24 Ab° Gm7 C7 Am7 Dm

Detailed description: This is a piano score for the song 'Eu sei que vou te amar.' in 4/4 time, key of B-flat major. The tempo is marked as quarter note = 90. The score is divided into six systems, each with a measure number and chord symbols above the staff. The first system (measures 1-4) has chords F, G#° (written as G#°), Gm7, and C7. The second system (measures 5-8) has chords F, Gm7, C7, Fmaj7, and Ab°. The third system (measures 9-13) has chords Gm7, C7, Am7, Dm, and Bbmaj7. The fourth system (measures 14-19) has chords Eb7, Am, Dm7, Gm7, C7, and F. The fifth system (measures 20-23) has chords D7, Gm7, C5# (written in red), and Fmaj7. The sixth system (measures 24-27) has chords Ab°, Gm7, C7, Am7, and Dm. The score uses a grand staff with treble and bass clefs.

2

29 B \flat maj7

Piano Am D7

34 B \flat B \flat m C F

Eu sei que vou te amar.

Trumpet in B \flat

$\text{♩} = 90$

7

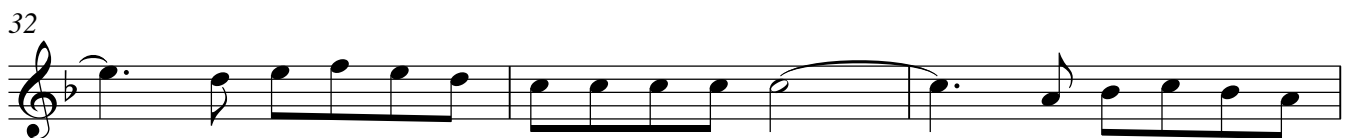
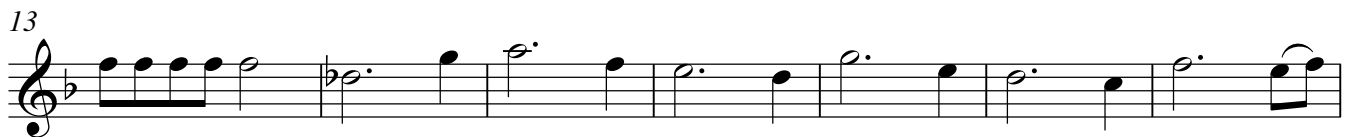
20 **2** con sord. **6**

32

35

Eu sei que vou te amar.

Violin



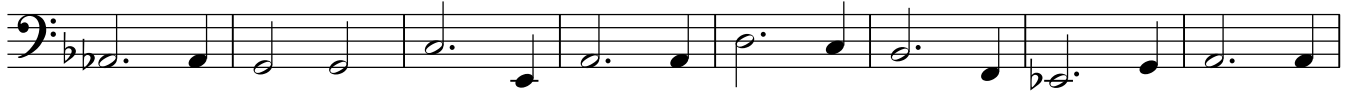
Eu sei que vou te amar.

Violoncello

♩=90



8



16



24



31

