

Suite 1 for Cello Solo

Transposed for viola

JOHANN SEBASTIAN BACH
BWV 1007

Prélude

3

6

9

12

15

18

21

24

27

30

33

36

39

Allemande

3

6

9

12

15

18

21



24

27

30

Detailed description: This block contains the first system of musical notation, spanning measures 21 to 30. It consists of four staves of music in 3/4 time, with a key signature of one sharp (F#). The music is characterized by rapid sixteenth-note passages, often beamed together in groups of four or six. Measure 21 starts with a treble clef and a sharp sign. Measure 24 has a measure rest. Measure 27 has a measure rest. Measure 30 ends with a double bar line and repeat dots. There are various accidentals (sharps, flats, naturals) and phrasing slurs throughout the system.

Courante



4

7

11

14

17

21

Detailed description: This block contains the second system of musical notation, titled 'Courante'. It consists of seven staves of music in 3/4 time, with a key signature of one sharp (F#). The music features a mix of eighth and sixteenth notes, often beamed together. There are several phrasing slurs and dynamic markings. Measure 4 has a measure rest. Measure 7 has a measure rest. Measure 11 has a measure rest. Measure 14 has a measure rest. Measure 17 has a measure rest. Measure 21 has a measure rest. At the bottom of the page, there is a blue watermark: 'Brought to you by www.viola-in-music.com'.

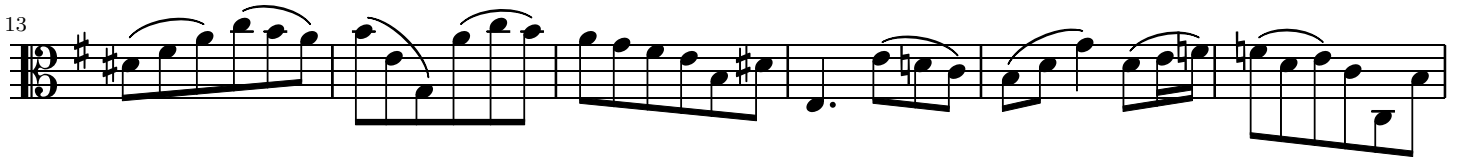
Musical score for a piece, measures 25-39. The score is written in bass clef with a key signature of one sharp (F#) and a time signature of 3/4. The music consists of five staves of notation, featuring a variety of rhythmic patterns including eighth and sixteenth notes, often grouped with slurs and beams. Measure numbers 25, 29, 33, 36, and 39 are indicated at the beginning of their respective staves.

Sarabande

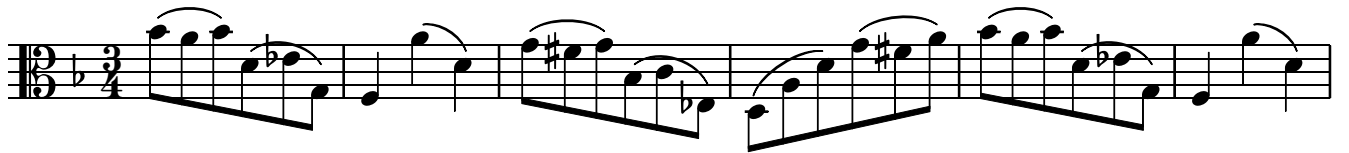
Musical score for Sarabande, measures 1-13. The score is written in bass clef with a key signature of one sharp (F#) and a time signature of 3/4. The music consists of four staves of notation, featuring a variety of rhythmic patterns including eighth and sixteenth notes, often grouped with slurs and beams. Measure numbers 1, 5, 9, and 13 are indicated at the beginning of their respective staves. The piece includes dynamic markings such as *tr* (trill) and *trp* (trillo piano).

Menuet 1

Musical score for Menuet 1, measures 1-4. The score is written in bass clef with a key signature of one sharp (F#) and a time signature of 3/4. The music consists of one staff of notation, featuring a variety of rhythmic patterns including eighth and sixteenth notes, often grouped with slurs and beams. A measure number 1 is indicated at the beginning of the staff. The piece includes a dynamic marking of *tr* (trill).



Menuet 2



Gigue



The image displays three systems of musical notation, each consisting of a single staff with a treble clef and a key signature of one sharp (F#). The first system begins at measure 18 and ends at measure 23. The second system begins at measure 24 and ends at measure 29. The third system begins at measure 30 and ends at measure 35, concluding with a double bar line and repeat dots. The music is characterized by frequent eighth-note patterns, often beamed together in groups of four or six, and includes various accidentals such as sharps and flats.