

Cello

He's Always Been Faithful

(Revised - 4/28/08)

This chart by Paul Langford
(edited by TMV)

Sara Groves

♩ = 100

Piano Intro:

A

[Verse 1]

B

[Chorus 1]

Musical staff with a bass clef and 3/4 time signature. It contains three measure rests: a 4-measure rest, a 16-measure rest, and a 10-measure rest.

A

[Verse 2]

legato:

Musical staff with a bass clef and 3/4 time signature. It contains the first six measures of Verse 2, starting with a half note and followed by quarter notes.

31 *pp* *mp*

Musical staff with a bass clef and 3/4 time signature. It contains measures 7 through 12 of Verse 2, featuring eighth notes and quarter notes with slurs.

37

Musical staff with a bass clef and 3/4 time signature. It contains measures 13 through 18 of Verse 2, featuring quarter notes and eighth notes with slurs.

43

Musical staff with a bass clef and 3/4 time signature. It contains measures 19 through 24 of Verse 2, including a 2-measure rest and a 3-measure rest.

49

Solo:

mf *f*

Musical staff with a bass clef and 3/4 time signature. It contains measures 25 through 30 of Verse 2, featuring eighth notes and quarter notes with slurs.

58

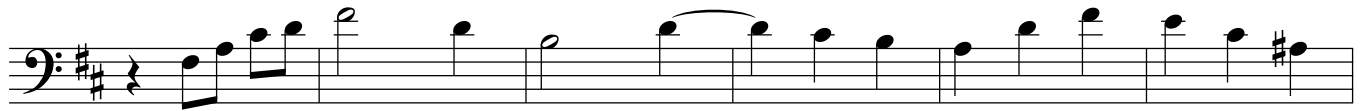
Musical staff with a bass clef and 3/4 time signature. It contains measures 31 through 36 of Verse 2, including a 6-measure rest and a key signature change to D major.

64

Musical staff with a bass clef and 3/4 time signature. It contains measures 37 through 42 of Verse 2, featuring quarter notes and eighth notes with slurs.

75

He's Always Been Faithful...p.2



81



87



93



100

mp

Rit.-----

a tempo