

Hommage à J. S. Bach

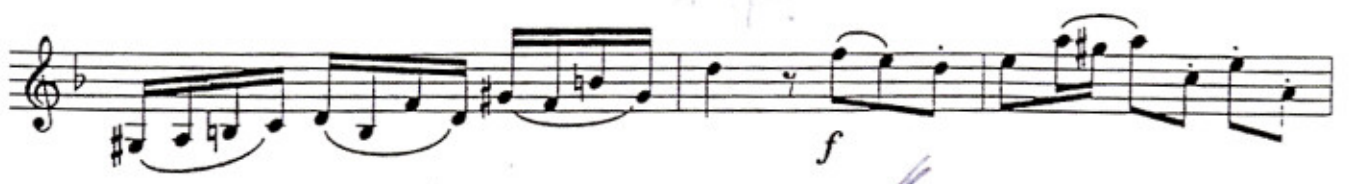
subd.

Adagio (♩ = 76)

The Adagio section consists of the first three staves of music. It begins with a treble clef, a key signature of one flat (B-flat), and a 4/4 time signature. The tempo is marked 'Adagio' with a quarter note equal to 76 beats per minute. The first staff starts with a dynamic marking of *mf* and includes a trill (*tr*) on a note. The second and third staves continue the melodic line with various phrasing slurs and dynamics. A *cresc.* marking is present at the end of the third staff.

Allgro assai (♩ = 140)

The Allgro assai section consists of the remaining four staves of music. It begins with a treble clef, a key signature of one flat, and a 4/4 time signature. The tempo is marked 'Allgro assai' with a quarter note equal to 140 beats per minute. The first staff of this section starts with a dynamic marking of *f* and includes a *p* marking later. The second and third staves continue the melodic line with various phrasing slurs and dynamics. The fourth staff ends with a dynamic marking of *mf*. The word 'atp' is written in blue ink above the final staff.



The image shows a page of musical notation with ten staves. The notation includes various dynamics such as *f*, *p*, *cresc.*, and *mf*. There are also handwritten annotations in blue ink, including checkmarks, arrows, and the word "poco".

Staff 1: *f*, *p*, *f*

Staff 2: *p*, *cresc.*, *mf*

Staff 3: (no dynamics)

Staff 4: (no dynamics)

Staff 5: (no dynamics)

Staff 6: (no dynamics)

Staff 7: *f*, *p*

Staff 8: (no dynamics)

Staff 9: (no dynamics)

Staff 10: (no dynamics)

poco a poco cresc.



2' 50"