

Good Bye Bossa

Bossa Nova

Am9

Musical notation for measures 1 and 2. The key signature is Am9 and the time signature is 4/4. The treble clef staff contains whole rests for both measures. The bass clef staff contains the following notes: Measure 1: G2 (quarter), A2 (quarter), B2 (quarter), C3 (quarter). Measure 2: G2 (quarter), A2 (quarter), B2 (quarter), C3 (quarter). Measure numbers 1 and 2 are written above the bass staff.

Musical notation for measures 3 and 4. The treble clef staff contains whole rests for both measures. The bass clef staff contains the following notes: Measure 3: G2 (quarter), A2 (quarter), B2 (quarter), C3 (quarter). Measure 4: D3 (quarter), C3 (quarter), B2 (quarter), A2 (quarter). Measure numbers 3 and 4 are written above the bass staff.

Musical notation for measures 5 and 6. The treble clef staff contains whole rests for both measures. The bass clef staff contains the following notes: Measure 5: G2 (quarter), A2 (quarter), B2 (quarter), C3 (quarter). Measure 6: D3 (quarter), C3 (quarter), B2 (quarter), A2 (quarter). Measure numbers 5 and 6 are written above the bass staff.

E7#9

Musical notation for measures 7 and 8. The treble clef staff contains whole rests for both measures. The bass clef staff contains the following notes: Measure 7: G2 (quarter), A2 (quarter), B2 (quarter), C3 (quarter). Measure 8: D3 (quarter), C3 (quarter), B2 (quarter), A2 (quarter). Measure numbers 7 and 8 are written above the bass staff.

Am7

Bm7b5

E7

Musical notation for measures 9 and 10. Measure 9 (Am7) contains a quarter note G4, an eighth note A4, a quarter note B4, and an eighth note A4. Measure 10 (Bm7b5) contains a quarter note B4, an eighth note C5, a quarter note D5, and an eighth note C5.

Am7

Bm7b5

E7

Musical notation for measures 11 and 12. Measure 11 (Am7) contains a quarter note G4, an eighth note A4, a quarter note B4, and an eighth note A4. Measure 12 (Bm7b5) contains a quarter note B4, an eighth note C5, a quarter note D5, and an eighth note C5.

Am7

Bm7b5

E7

Musical notation for measures 13 and 14. Measure 13 (Am7) contains a quarter note G4, an eighth note A4, a quarter note B4, and an eighth note A4. Measure 14 (Bm7b5) contains a quarter note B4, an eighth note C5, a quarter note D5, and an eighth note C5.

Am7

Em7b5

A7

Musical notation for measures 15 and 16. Measure 15 (Am7) contains a quarter note G4, an eighth note A4, a quarter note B4, and an eighth note A4. Measure 16 (Em7b5) contains a quarter note B4, an eighth note C5, a quarter note D5, and an eighth note C5 with a sharp sign (#).

Dm7

G7

Musical notation for measures 17 and 18. Measure 17 (Dm7) contains a quarter note G4, an eighth note A4, a quarter note B4, and an eighth note A4. Measure 18 (G7) contains a quarter note B4, an eighth note C5, a quarter note D5, and an eighth note C5.

C7

F7

Musical notation for measures 19 and 20. Measure 19 (C7) contains a quarter note G4, an eighth note A4, a quarter note B4, and a quarter note Bb4. Measure 20 (F7) contains a quarter note F4, an eighth note G4, a quarter note A4, and a quarter note B4.

Bm7b5

E7

Musical notation for measures 21 and 22. Measure 21 (Bm7b5) contains a quarter note G4, an eighth note A4, a quarter note B4, and a quarter note Bb4. Measure 22 (E7) contains a quarter note F4, an eighth note G4, a quarter note A4, and a quarter note B4.

Am7

E7#9

Musical notation for measures 23 and 24. Measure 23 (Am7) contains a quarter note G4, an eighth note A4, a quarter note B4, and a quarter note Bb4. Measure 24 (E7#9) contains a quarter note F4, a half note G4, and a quarter note A4.

Am7

Bm7b5

E7

Musical notation for measures 25 and 26. Measure 25 (Am7) contains a quarter note G4, an eighth note A4, a quarter note B4, and a quarter note Bb4. Measure 26 (Bm7b5 E7) contains a quarter note F4, an eighth note G4, a quarter note A4, and a quarter note B4.

Am7

Bm7b5

E7

Musical notation for measures 27 and 28. Measure 27 (Am7) contains a quarter note G4, an eighth note A4, a quarter note B4, and a quarter note Bb4. Measure 28 (Bm7b5 E7) contains a quarter note F4, an eighth note G4, a quarter note A4, and a quarter note B4.

Am7

A7

Musical notation for measures 29 and 30. Measure 29 (Am7) contains a quarter note G4, an eighth note A4, a quarter note B4, and a quarter note A4. Measure 30 (A7) contains a quarter note A4, an eighth note B4, a quarter note C5, and a quarter note B4 with a sharp sign.

Dm7

Musical notation for measures 31 and 32. Measure 31 (Dm7) contains a quarter note D4, an eighth note E4, a quarter note F4, and a quarter note E4. Measure 32 (Dm7) contains a quarter note D4, an eighth note E4, a quarter note F4, and a quarter note G4.

Dm7

G7

Musical notation for measures 33 and 34. Measure 33 (Dm7) contains a quarter note D4, an eighth note E4, a quarter note F4, and a quarter note G4. Measure 34 (G7) contains a quarter note G4, an eighth note A4, a quarter note B4, and a quarter note A4.

CMaj7

F69

Musical notation for measures 35 and 36. Measure 35 (CMaj7) contains a quarter note C4, an eighth note D4, a quarter note E4, and a quarter note C4 with a flat sign. Measure 36 (F69) contains a quarter note F4, an eighth note G4, a quarter note A4, and a quarter note F4.

Bm7b5

E7

Musical notation for measures 37 and 38. Measure 37 (Bm7b5) contains a quarter note B3, an eighth note C4, a quarter note D4, and a quarter note B3. Measure 38 (E7) contains a quarter note E4, an eighth note F4, a quarter note G4, and a quarter note E4.

Am7

E7#9

Musical notation for measures 39 and 40. Measure 39 (Am7) contains a quarter note G4, an eighth note A4, a quarter note B4, and a quarter note C5. Measure 40 (E7#9) contains a quarter note D5, a quarter note E5, a quarter note F#5, and a quarter note G5.

Am7

Bm7b5

E7

Musical notation for measures 41 and 42. Measure 41 (Am7) contains a quarter note G4, an eighth note A4, a quarter note B4, a quarter note C5, a quarter note D5, and a quarter note E5. Measure 42 (Bm7b5 and E7) contains a quarter note F#5, a quarter note G5, a quarter note A5, and a quarter note B5.

Am7

Bm7b5

E7

Musical notation for measures 43 and 44. Measure 43 (Am7) contains a quarter note G4, an eighth note A4, a quarter note B4, a quarter note C5, a quarter note D5, and a quarter note E5. Measure 44 (Bm7b5 and E7) contains a quarter note F#5, a quarter note G5, a quarter note A5, and a quarter note B5.

Am7

Bm7b5

E7

Musical notation for measures 45 and 46. Measure 45 (Am7) contains a quarter note G4, an eighth note A4, a quarter note B4, a quarter note C5, a quarter note D5, and a quarter note E5. Measure 46 (Bm7b5 and E7) contains a quarter note F#5, a quarter note G5, a quarter note A5, and a quarter note B5.

Am7

A7+

Musical notation for measures 47 and 48. Measure 47 (Am7) contains a quarter note G4, an eighth note A4, a quarter note B4, a quarter note C5, a quarter note D5, and a quarter note E5. Measure 48 (A7+) contains a quarter note F#5, a quarter note G5, a quarter note A5, and a quarter note B5.

Dm7

G7

Musical notation for measures 49 and 50. Measure 49 (Dm7) contains a quarter note G4, an eighth note A4, a quarter note B4, and a quarter note G4. Measure 50 (G7) contains a quarter note G4, an eighth note F4, a quarter note E4, and a quarter note G4.

CMaj7

FMaj7

Musical notation for measures 51 and 52. Measure 51 (CMaj7) contains a quarter note G4, an eighth note A4, a quarter note B4, and a quarter note G4. Measure 52 (FMaj7) contains a quarter note G4, an eighth note F4, a quarter note E4, and a quarter note G4.

Bm7b5

E7

Musical notation for measures 53 and 54. Measure 53 (Bm7b5) contains a quarter note G4, an eighth note A4, a quarter note B4, and a quarter note G4. Measure 54 (E7) contains a quarter note G4, an eighth note F4, a quarter note E4, and a quarter note G4.

Am7

A7alt

Musical notation for measures 55 and 56. Measure 55 (Am7) contains a quarter note G4, an eighth note A4, a quarter note B4, and a quarter note G4. Measure 56 (A7alt) contains a quarter note G4, an eighth note F4, a quarter note E4, and a quarter note G4.

Dm7

G7

Musical notation for measures 57 and 58. Measure 57 (Dm7) contains a quarter note G4, an eighth note A4, a quarter note B4, and a quarter note G4. Measure 58 (G7) contains a quarter note G4, an eighth note F4, a quarter note E4, and a quarter note G4.

CMaj7

F7sus

59 60

Measures 59 and 60 of the musical score. Measure 59 is under the CMaj7 chord and measure 60 is under the F7sus chord. Both measures contain a single melodic line on a five-line staff with a treble clef. Measure 59 contains four notes: C4 (quarter), D4 (quarter), E4 (quarter), and F4 (quarter). Measure 60 contains four notes: F4 (quarter), G4 (quarter), A4 (quarter), and B4 (quarter).

Bm7b5

E7#9

61 62

Measures 61 and 62 of the musical score. Measure 61 is under the Bm7b5 chord and measure 62 is under the E7#9 chord. Both measures contain a single melodic line on a five-line staff with a treble clef. Measure 61 contains four notes: B3 (quarter), C4 (quarter), D4 (quarter), and E4 (quarter). Measure 62 contains four notes: E4 (quarter), F#4 (quarter), G4 (quarter), and A4 (quarter).

Am7

Bm7b5

E7

63 64

Measures 63 and 64 of the musical score. Measure 63 is under the Am7 chord and measure 64 is under the Bm7b5 chord. Both measures contain a single melodic line on a five-line staff with a treble clef. Measure 63 contains four notes: A3 (quarter), B3 (quarter), C4 (quarter), and D4 (quarter). Measure 64 contains four notes: B3 (quarter), C4 (quarter), D4 (quarter), and E4 (quarter).

Am7

E7#9

65 66

Measures 65 and 66 of the musical score. Measure 65 is under the Am7 chord and measure 66 is under the E7#9 chord. Both measures contain a single melodic line on a five-line staff with a treble clef. Measure 65 contains four notes: A3 (quarter), B3 (quarter), C4 (quarter), and D4 (quarter). Measure 66 contains four notes: E4 (quarter), F#4 (quarter), G4 (quarter), and A4 (quarter).

Am7

Bm7b5

E7

67 68

Measures 67 and 68 of the musical score. Measure 67 is under the Am7 chord and measure 68 is under the Bm7b5 chord. Both measures contain a single melodic line on a five-line staff with a treble clef. Measure 67 contains four notes: A3 (quarter), B3 (quarter), C4 (quarter), and D4 (quarter). Measure 68 contains four notes: B3 (quarter), C4 (quarter), D4 (quarter), and E4 (quarter).

Am7

Bm7b5

E7

69



70



Am7

Bm7b5

E7

71



72



Am7

A7+

73



74



Dm7

G7

75



76



CMaj7

FMaj7

77



78



Bm7b5

E7

Musical notation for measures 79 and 80. Measure 79 (Bm7b5) contains a quarter note G2, an eighth note A2, a quarter note B2, and a quarter note C#3. Measure 80 (E7) contains a quarter note D3, an eighth note E3, a quarter note F#3, a quarter note G3, and a quarter note A3.

Am7

A7alt

Musical notation for measures 81 and 82. Measure 81 (Am7) contains a quarter note G2, an eighth note A2, a quarter note B2, and a quarter note C3. Measure 82 (A7alt) contains a quarter note D3, an eighth note E3, a quarter note F#3, a quarter note G3, and a quarter note A3.

Dm7

G7

Musical notation for measures 83 and 84. Measure 83 (Dm7) contains a quarter note G2, an eighth note A2, a quarter note B2, and a quarter note C3. Measure 84 (G7) contains a quarter note D3, an eighth note E3, a quarter note F#3, a quarter note G3, and a quarter note A3.

CMaj7

F7

Musical notation for measures 85 and 86. Measure 85 (CMaj7) contains a quarter note G2, an eighth note A2, a quarter note B2, and a quarter note C3. Measure 86 (F7) contains a quarter note D3, an eighth note E3, a quarter note F#3, a quarter note G3, and a quarter note A3.

Bm7b5

E7#9

Musical notation for measures 87 and 88. Measure 87 (Bm7b5) contains a quarter note G2, an eighth note A2, a quarter note B2, and a quarter note C#3. Measure 88 (E7#9) contains a quarter note D3, an eighth note E3, a quarter note F#3, a quarter note G3, and a quarter note A3.

Am7

Bm7b5

E7

89



90



Am7

E7#9

91



92



Am7

Bm7b5

E7

93



94



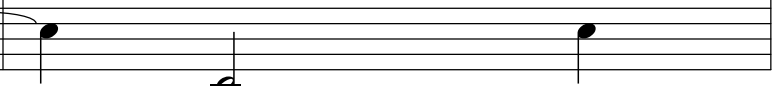
Am7

E7#9

95



96



Bm7b5

E7

97



98



Am7

Bm7b5

E7

99



100



Am7

Bm7b5

E7

101



102



Am7

Bm7b5

E7

103



104



Am7

Bm7b5

E7

105



106



Am

107

