

THAT'S SOUL: 2. SOUL MAN

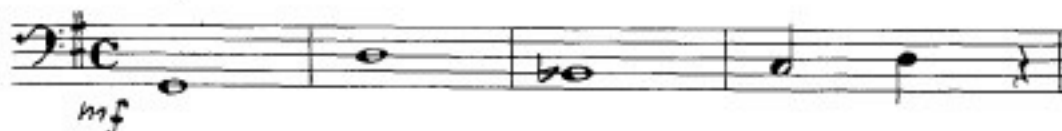
Text u. Musik: I. Hayes / D. Porter, Arr.: H. Gabriel

453

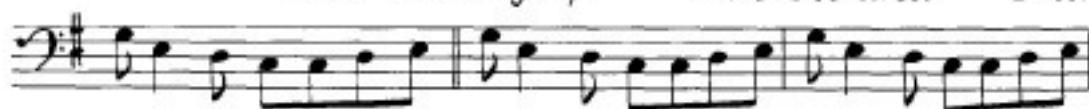
BEWEISUNG:
Piano-Dir., 1. 2. 3. Stimme in C, 1. Stimme in B (Typ.), 1. 2. Stimme in B m. Melodie (Ten.-Sax.), 3. Stimme in B m. Melodie (1. Alt), Baß, Gitarre, Schlagzeug/Organ.
Orgel: 3. Stimme in B u. B, 4. Stimme in B u. B, Pedale.

Bass

4 Takte = 8,5 Sec.



1.) Com-in' to you on a dirt road
2.) Got what I got the hard way and I
3.) I was brought up on a side street I lear-



1.) God lov-in', I got a truck load and when you ^{get} you
2.) make you know each and ever-y day. Be sure, hon-ey, you
3.) - ned how to love be-fore I could eat. I was e-du-ca-ted at



1.) got jump'n so don't wor-ry 'cause I'm com-ing.)
2.) don't lose it 'cause you ain't seen — noth-ing yet.) I'm a
3.) wood-stuck when I start lov-in' oh, I can't stop.)



soul man,

I'm a soul man,



AUFG. AUF ATLANTIC 70215 mit SAM & DAVE

