

SONATÆ
UNARUM FIDIUM
Violino Solo

Norimbergæ 1664

Johann Heinrich Schmelzer
c. 1620 – 1680

Published by Johan Tufvesson.

Non-commercial copying welcome

Revision : 1.1

Sonata Prima

J. H. Schmelzer (c. 1620–1680)

6

11

13

15

17

26

30

34

37

40

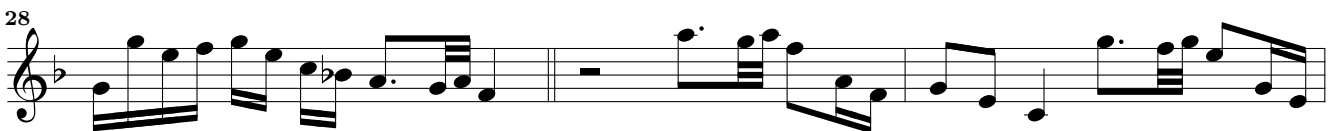
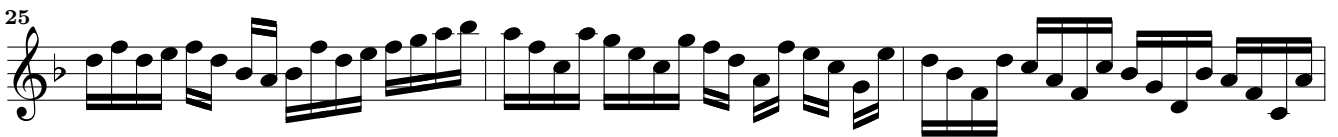
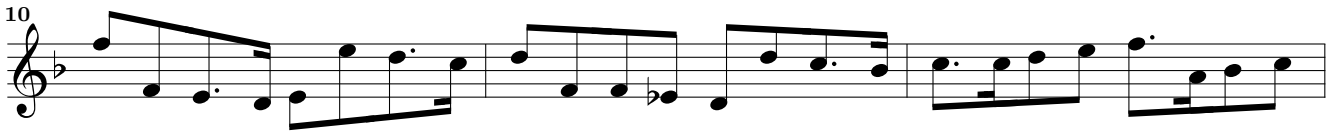
43

Musical score for Violino, Sonata Prima, measures 45-71. The score is written in treble clef and consists of ten staves. Measure 45 starts with a treble clef and a key signature of one sharp (F#). Measure 47 has a key signature change to one flat (Bb). Measure 53 has a time signature change to 12/8. Measure 56 has a key signature change to two flats (Bb, Eb). Measure 58 has a key signature change to one flat (Bb). Measure 61 has a key signature change to two flats (Bb, Eb). Measure 63 has a key signature change to one flat (Bb). Measure 65 has a key signature change to one sharp (F#). Measure 67 has a key signature change to one flat (Bb). Measure 69 has a key signature change to one sharp (F#). Measure 71 ends with a double bar line and a common time signature (C).

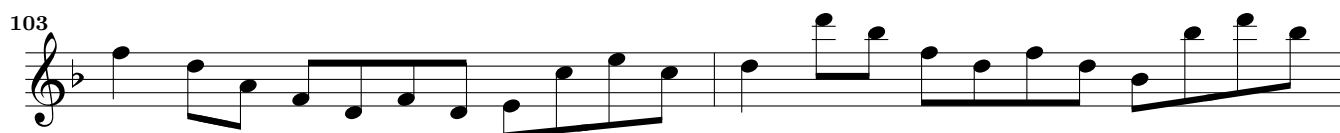
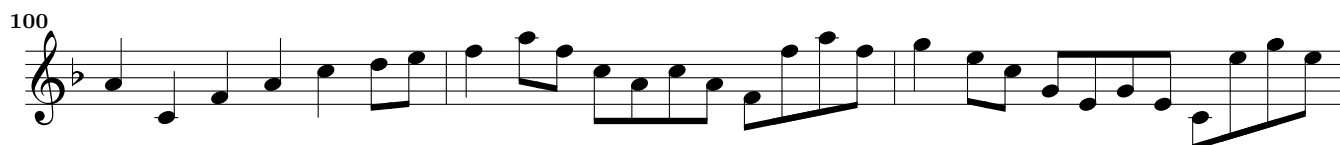
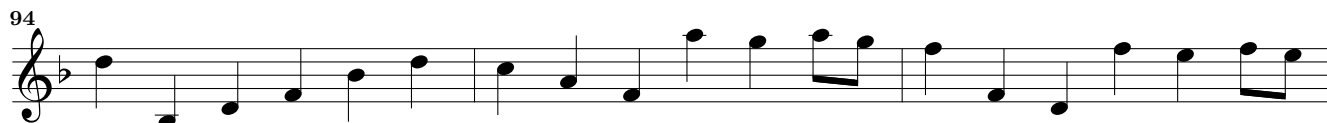
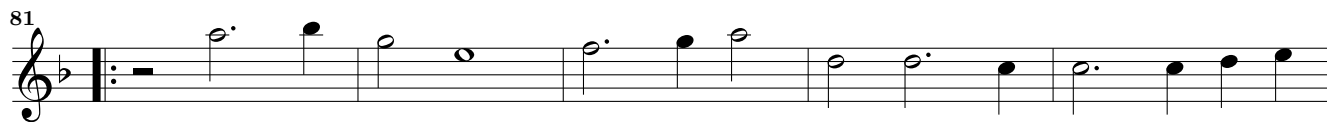
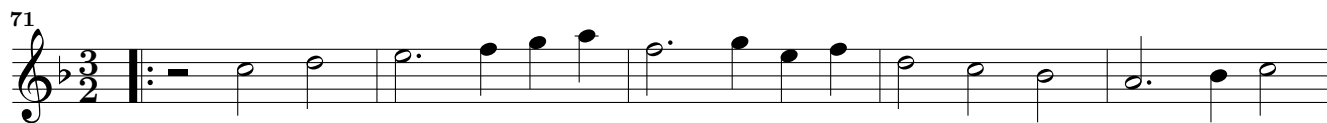
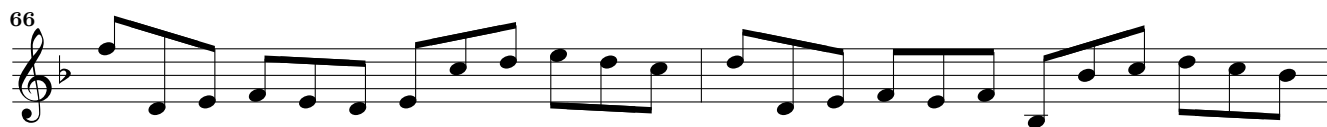
Musical score for Violino, Sonata Prima, measures 73-106. The score is written in treble clef and common time (C). It features a complex melodic line with many sixteenth and thirty-second notes, including triplets and slurs. The key signature changes from one sharp (F#) to one flat (Bb) and back to one sharp (F#). The tempo/mood is marked 'grosso.' at measure 88. The score ends with a 3-measure rest and a final double bar line.

Musical score for Violino, Sonata Prima, measures 112-154. The score is written in treble clef and common time (C). The key signature is one sharp (F#). The music consists of a single melodic line with various rhythmic patterns, including eighth and sixteenth notes, and rests. The score is divided into systems of four staves each, with measure numbers 112, 115, 119, 122, 124, 127, 130, 134, 138, 141, 144, 149, and 154 marking the beginning of each system.

Sonata Secunda



Musical score for Violino, Sonata Secunda, measures 37-62. The score is written in treble clef with a key signature of one flat (B-flat). The time signature is 12/8, indicated by a '12' over an '8' in measure 41. The music consists of ten staves of notation, each starting with a measure number. The notation includes various rhythmic values, including eighth and sixteenth notes, and rests. The piece concludes with a double bar line and a 12/8 time signature in measure 62.



Musical score for Violino, Sonata Secunda, measures 105-135. The score is written in treble clef with a key signature of one flat (B-flat). The music features a series of eighth-note patterns, many of which are grouped as triplets (indicated by a '3' above the notes). The piece concludes with a fermata over the final note.

Sonata Tertia

6

11

14

17

20 *f* *p* *f* *p*

22 *f* *p* *f* *p*

24

26

28

31

35

Musical score for Violino, measures 39-58. The score is written in treble clef with a key signature of one flat (B-flat). The tempo is not explicitly marked for this section. The music features a variety of rhythmic patterns, including eighth and sixteenth notes, and rests. A 12/8 time signature change is indicated at measure 42. The piece concludes with a fermata at the end of measure 58.

adagio

Musical score for Violino, measures 61-67. The tempo is marked **adagio**. The score is written in treble clef with a key signature of one flat (B-flat). The music features a variety of rhythmic patterns, including eighth and sixteenth notes, and rests. The piece concludes with a fermata at the end of measure 67.

Musical score for Violino, Sonata Tertia, measures 71-105. The score is written in treble clef with a key signature of one flat (B-flat). The music features a complex rhythmic pattern of sixteenth and thirty-second notes, often beamed together. Dynamics include *f* (forte) and *p* (piano). Trills (*tr*) are present in measures 75, 79, and 89. A fermata is used in measure 89. A triplet of eighth notes appears in measure 89. The score concludes with a final cadence in measure 105.

Allegro

111

118

Adagio

125

131

136

140

145

150

154

157

161

165

Sonata Quarta

8

15

21

28

37

43

49

54

58

62

66

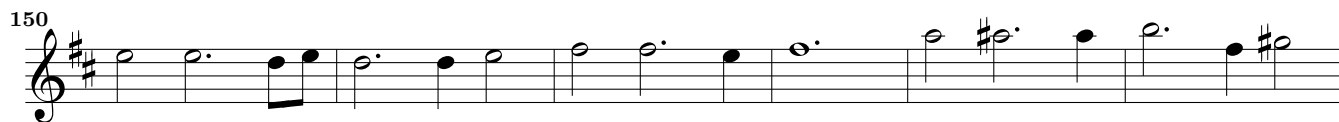
70

75

3

Musical score for Violino, Sonata Quarta, measures 81-129. The score is written in treble clef with a key signature of one sharp (F#). The music consists of a single melodic line. Measures 81-85 show a series of half notes with a slur. Measures 86-90 are a sequence of eighth notes. Measure 91 features a quarter rest followed by a four-measure rest, then a series of eighth notes. Measures 92-104 continue with eighth notes. Measures 105-110 show a more complex rhythmic pattern with eighth and sixteenth notes. Measures 111-116 continue with eighth notes. Measures 117-120 feature a series of eighth notes with a sharp sign above the final measure. Measures 121-124 continue with eighth notes. Measures 125-128 show a series of eighth notes. Measure 129 ends with a four-measure rest.

Sarabanda



Adagio

3

Gigue



192

196

199

203

209

213

217

220

222

224

226

p

tr.

tr.

3

The image shows a page of musical notation for a violin part. It consists of ten staves of music, each starting with a measure number. The key signature is one sharp (F#) and the time signature is common time (C). The music features a variety of rhythmic patterns, including eighth and sixteenth notes, and rests. There are dynamic markings such as *p* (piano) and *tr.* (trill). A triplet of eighth notes is marked with a '3' above it. The notation includes slurs, ties, and various articulation marks.

Allegro

Musical score for the Allegro section, measures 230 to 247. The score is written for a single violin in treble clef with a key signature of one sharp (F#). The tempo is marked Allegro. The music consists of a single melodic line with various rhythmic patterns, including eighth and sixteenth notes, and rests. A time signature change to 12/8 is indicated at measure 236. The section concludes with a double bar line and a common time signature (C) at measure 247.

Presto

Musical score for the Presto section, measures 248 to 259. The score is written for a single violin in treble clef with a key signature of one sharp (F#). The tempo is marked Presto. The music consists of a single melodic line with a high density of sixteenth notes, creating a rapid, rhythmic texture. The section concludes with a double bar line and a common time signature (C) at measure 259.

Sonata Quinta

5

9

13

16

Allegro

20

24

27

30

33

35

38

42

Musical score for Violin, measures 47-92. The score is written in treble clef with a key signature of two flats (B-flat and E-flat). The time signature is common time (C). The music features a variety of rhythmic patterns, including eighth and sixteenth notes, and rests. Measure 59 contains a common time signature change. Measure 83 includes a dynamic marking of *b* (piano). The piece concludes with a double bar line and a final chord marked with a 12/8 time signature.

90

91

93

94

96

99

102

105

108

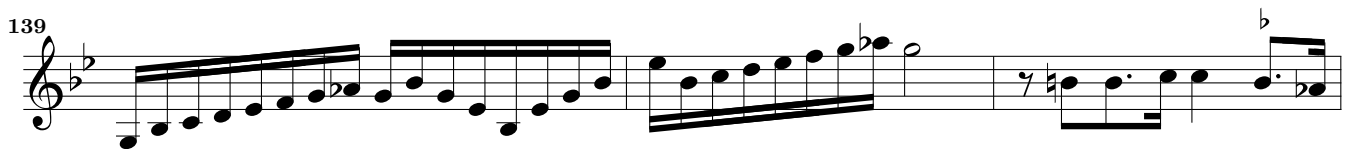
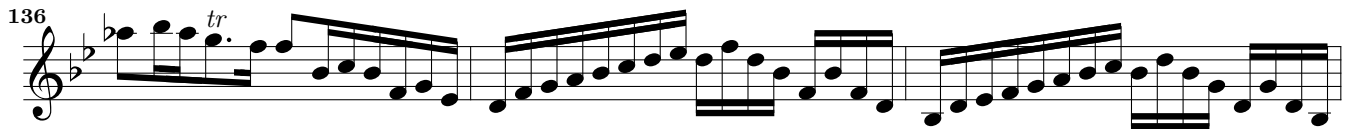
111

114

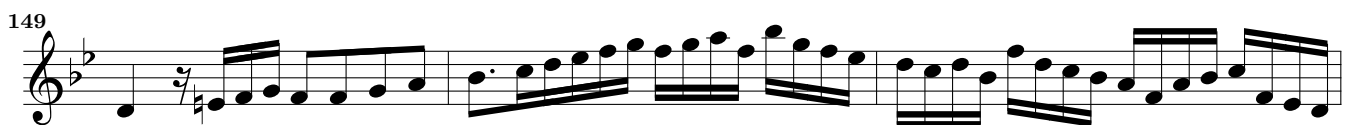
118

122

125



piu allegro

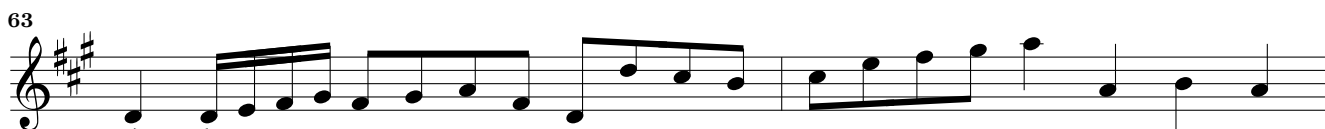
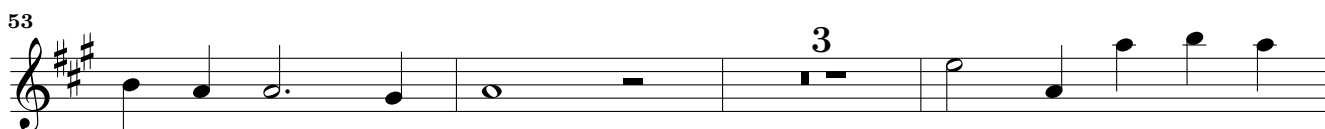


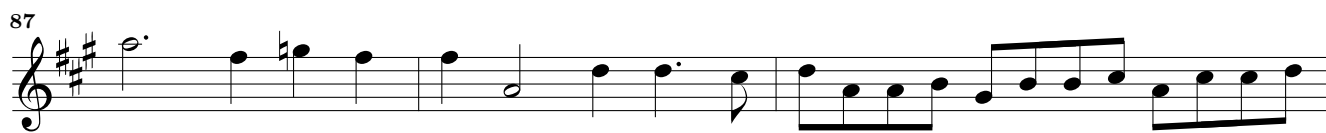
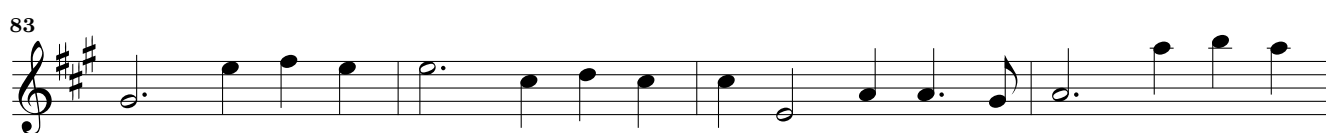
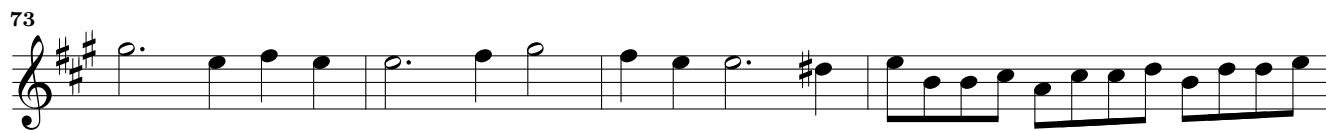
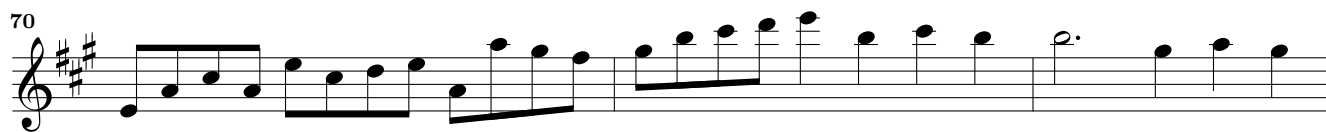
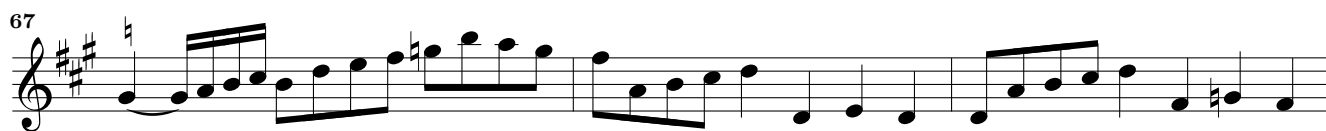
Adagio



Sonata Sexta

Musical score for Sonata Sexta, measures 1-40. The score is written in treble clef, 3/4 time, and D major (two sharps). The key signature is D major (two sharps). The time signature is 3/4. The score consists of ten staves of music. The first staff starts at measure 1. The second staff starts at measure 6. The third staff starts at measure 10. The fourth staff starts at measure 14. The fifth staff starts at measure 19. The sixth staff starts at measure 23. The seventh staff starts at measure 26. The eighth staff starts at measure 29. The ninth staff starts at measure 32. The tenth staff starts at measure 34 and ends at measure 40. The score concludes with a double bar line and a repeat sign, with the number 12 written above the bar line and the number 8 written below it.





Adagio

96

99

103

105

108

111

113

115

118

121

125

Adagio

tr.

Musical score for Violino, Sonata Sexta, measures 128-154. The score is written in treble clef with a key signature of three sharps (F#, C#, G#). The music consists of ten staves of notation. Measure 128 starts with a quarter note G4. Measure 131 features a half note G4. Measure 134 begins with a quarter note G4. Measure 136 starts with a quarter note G4. Measure 138 begins with a quarter note G4. Measure 141 starts with a quarter note G4. Measure 144 begins with a quarter note G4. Measure 146 starts with a quarter note G4. Measure 149 begins with a quarter note G4. Measure 152 starts with a quarter note G4. Measure 154 begins with a quarter note G4, followed by a double bar line, a common time signature (C), a quarter rest, a quarter note G4, a quarter note A4, a quarter note B4, a quarter note C5, a quarter note B4, a quarter note A4, a quarter note G4, and a quarter note F#4. The final measure ends with a double bar line.