

Hallelujah Chorus from Messiah

HANDEL
HWV 56

Violin I

Allegro

[f]

5

9

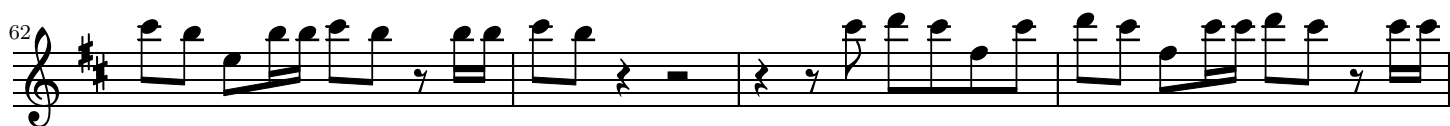
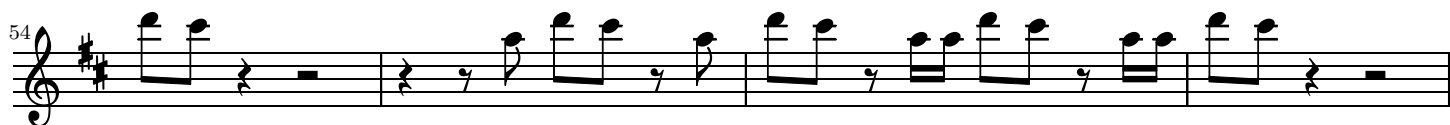
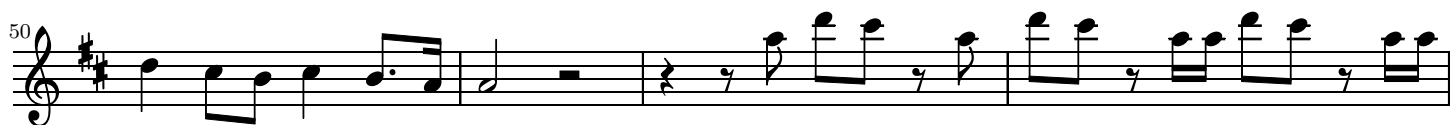
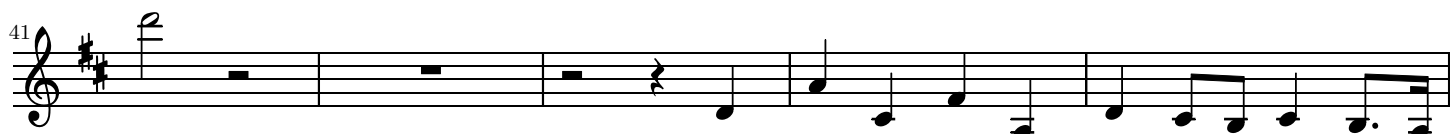
13

17

22

26

29



Musical score for a single melodic line in G major, measures 72-90. The score is written on a single staff in treble clef. The key signature has one sharp (F#) and the time signature is 4/4. The music consists of six lines of notation. Measure 72 starts with a quarter rest followed by a quarter note G4, then a quarter note A4, a quarter note B4, and a quarter note C5. Measure 73 continues with a quarter note D5, a quarter note E5, a quarter note F#5, and a quarter note G5. Measure 74 has a quarter note G5, a quarter note F#5, a quarter note E5, and a quarter note D5. Measure 75 features a quarter note C5, a quarter note B4, a quarter note A4, and a quarter note G4. Measure 76 begins with a quarter note G4, a quarter note A4, a quarter note B4, and a quarter note C5. Measure 77 has a quarter note D5, a quarter note E5, a quarter note F#5, and a quarter note G5. Measure 78 contains a quarter note G5, a quarter note F#5, a quarter note E5, and a quarter note D5. Measure 79 starts with a quarter note C5, a quarter note B4, a quarter note A4, and a quarter note G4. Measure 80 begins with a quarter note G4, a quarter note A4, a quarter note B4, and a quarter note C5. Measure 81 has a quarter note D5, a quarter note E5, a quarter note F#5, and a quarter note G5. Measure 82 contains a quarter note G5, a quarter note F#5, a quarter note E5, and a quarter note D5. Measure 83 starts with a quarter note C5, a quarter note B4, a quarter note A4, and a quarter note G4. Measure 84 has a quarter note G4, a quarter note A4, a quarter note B4, and a quarter note C5. Measure 85 features a quarter note D5, a quarter note E5, a quarter note F#5, and a quarter note G5. Measure 86 contains a quarter note G5, a quarter note F#5, a quarter note E5, and a quarter note D5. Measure 87 starts with a quarter note C5, a quarter note B4, a quarter note A4, and a quarter note G4. Measure 88 has a quarter note G4, a quarter note A4, a quarter note B4, and a quarter note C5. Measure 89 features a quarter note D5, a quarter note E5, a quarter note F#5, and a quarter note G5. Measure 90 contains a quarter note G5, a quarter note F#5, a quarter note E5, and a quarter note D5. The piece concludes with a final cadence in measure 90, consisting of a quarter note G4, a quarter note A4, a quarter note B4, and a half note C5.