

# I Can't Help Myself

## (Sugar Pie, Honey Bunch)

Words and Music by Brian Holland, Lamont Dozier and Edward Holland

### Intro

Moderately ♩ = 125

N.C.(C)

Bass Bass Fig. 1

*mf*

### Verse

Oo. \_\_\_\_\_

1. Sug - ar pie hon - ey bunch,  
sug - ar pie hon - ey bunch,

End Bass Fig. 1 Bass Fig. 2

G

you know that I \_\_\_\_\_ love you. \_\_\_\_\_ I can't  
you know that I'm wait - in' for you. \_\_\_\_\_ Can't  
(Sug - ar pie hon - ey bunch, wait - in' for you. \_\_\_\_\_ )

Dm G/E F G C6

help my - self. I love \_ you and no - bod - y else. \_ In \_

End Bass Fig. 2

Bass: w/ Bass Fig. 2

C

G



and out my life. you come and you go  
Sug - ar pie hon - ey bunch, (In and out my life, do an - y - thing you ask me to. come and you go. -  
(Sug - ar pie hon - ey bunch,

Dm  
Voc. Fig. 1

G/E



leav - ing just your pic - ture be - hind. And I kissed it a  
ask me to.) Can't help my - self, I want you and  
Oo, (

Verse  
Bass: w/ Bass Fig. 2

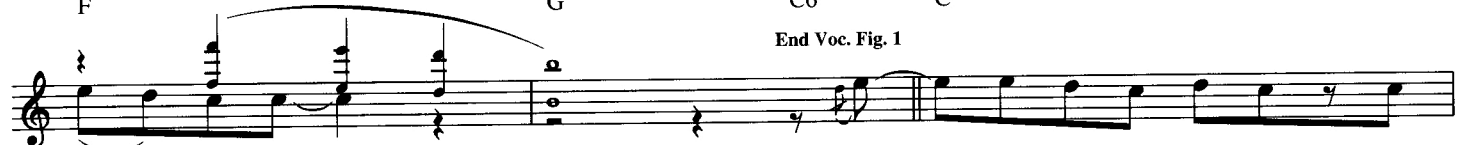
F

G

C6

C

End Voc. Fig. 1



thou - sand times. 2. When you snap your fin - ger or  
no - bod - y else. Oo. 5. Sug - ar pie hon - ey bunch,

To Coda

G



wink your eyes, I come a run - nin' to you. I'm tied to your  
(Sug - ar pie you know that I love you. Love you.)  
hon - ey bunch. Can't Can't

Dm

G/E

F

G

C6



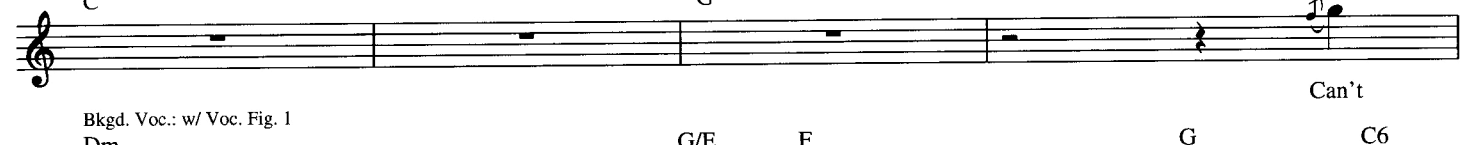
a - pron string and there's noth - ing that I can do. Oo.  
help my - self. Oo.)

Saxophone Solo

Bass: w/ Bass Fig. 2

C

G



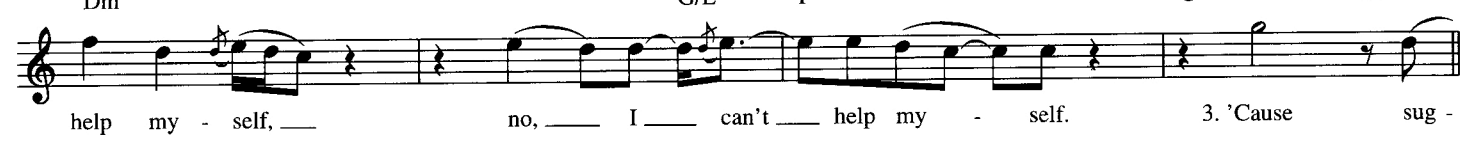
Bkgd. Voc.: w/ Voc. Fig. 1  
Dm

G/E

F

G

C6



help my - self, no, I can't help my - self. 3. 'Cause sug -

Verse

Bass: w/ Bass Fig. 2, 2 times

C

G



- ar pie hon - ey bunch, I'm weak - er than a man should be.  
(Sug - ar pie hon - ey bunch.)

Dm G/E

I can't help my - self. I'm a fool in

F G C6 C

love. you see. Wan - na tell you I don't love you, tell

G

you that we're through. And I've tried, but ev - 'ry time I Can't

Dm G/E F G C6

see your face help my - self.) I get all choked up in - side. When

**Interlude**

Bass: w/ Bass Fig. 1  
N.C.(C)

I call your name, girl, it starts to flame. (Burn - in' in my heart, tear'n'

*D.S. al Coda*

it all a - part.) No mat - ter how I try, my love I can - not hide. 4. 'Cause

**⊕ Coda**

*Begin Fade*

Dm G/E F G C6

help my - self, no I can't help my - self. Oo.

Bass: w/ Bass Fig. 2, 1st 2 meas.

C

*Fade Out*

Sug - ar pie hon - ey bunch. (Sug - ar pie hon - ey bunch.)