

Herbert Lindholm

Basic Flute Technique

Peruskuviot huilulle

op. 26

Helin & Sons, Helsinki

Basic Flute Technique

Foreword

This book has the same goal as a teacher should have; to make himself unnecessary. Its purpose is to help young flute teachers in their work. It's not always easy to invent suitable finger and sound exercises, but I hope that this book will inspire teachers to find the endless variations that basic flute exercises can have, if one has a creative mind.

The fundamental premise is that the development of basic skills happens best by practising without music, and by concentrating on the playing only.

“Basic Flute Technique” works mainly as a collection of teaching ideas, whereby a teacher can choose and adapt the practice material for the student's needs. The foundation for most of the exercises are the five first notes of the major scale, which are used as the basic figure for building up the finger technique. Using the same method, one can also vary exercises in books like; M. A. Reichert: “Daily exercises”, op. 5, Taffanel-Gaubert: “17 Big Daily Finger Exercises” and E. Köhler: “Schule der Geläufigkeit”.

Kuopio, 1994

The Author

Translated by Outi and Paul Svoboda

Peruskuviot huilulle

Esipuhe

Tällä nuottivihkolla on sama funktio kuin opettajalla; tehdä itsensä tarpeettomaksi. Sen tarkoitus on auttaa nuoria aloittelevia huilupedagogeja heidän työssään. Sopivien sormi- ja ääniharjoitusten keksiminen ei aina ole kovin helppoa, joten toivon, että tämä vihko inspiroisi opettajan löytämään ne loputtomat variaatiomahdollisuudet, joita huilun perusharjoituksissa voi luovalla kekseliäisyydellä olla. Lähtökohtana on, että perustaitojen kehittäminen tapahtuu parhaiten harjoittelemalla ilman nuotteja ja keskittymällä itse asiaan.

“Peruskuviot huilulle” toimii lähinnä eräänlaisena materiaalivarastona, josta opettaja voi poimia ja soveltaa tarvitsemaansa harjoitusaineistoa kulloisiinkin oppilaan tarpeisiin. Perustana suurelle osalle harjoituksista on duuriasteikon viisi ensimmäistä säveltä, joita tekijä käyttää peruskuviona sormitekniikan rakentamisessa. Samalla keinolla voi edelleen muunnella esimerkiksi M. A. Reichertin “Tägliche Übungen”, op. 5, Taffanel-Gaubertin “17 Big Daily Finger exercises” tai Köhlerin “Schule der Geläufigkeit”.

Kiitän Outi ja Paul Svobodaa käännöstyön avusta.

Kuopiossa 1994 Tekijä

Basic Flute Technique

Peruskuviot huilulle

Contents:

	page
<i>Sisällysluettelo:</i>	<i>sivu</i>
Foreword • <i>Esipuhe</i>	
I Scales • <i>Asteikkoja</i>	1
II Technical patterns • <i>Peruskuvioita</i>	10
III Interval exercises • <i>Intervalliharjoituksia</i>	16
IV Tone studies • <i>Ääniharjoituksia</i>	20
V Other exercises • <i>Muita harjoituksia</i>	23
VI Chord exercises • <i>Sointuharjoituksia</i>	26
VII Trill chart • <i>Trillitaulukko</i>	30
VIII Micro intervals • <i>Mikrointervalleja</i>	34
IX Some usual modern flute sounds • <i>Tavallisimpia moderneja soittotapoja</i>	36
X The Parts of the flute Numbering of keys <i>Huilun osat ja läppien numerointi</i>	38

Herbert Lindholm

Basic Flute Technique • Peruskuviot huilulle
I Scales • Asteikkoja

EASY SCALES

HELPPOJA ASTEIKKOJA

C major *C duuri*



A minor (harmonic minor) *a molli (harmoninen molli)*



G major *G duuri*



E minor *e molli*



D major *D duuri*



B minor *h molli*



F major *F duuri*



D minor *d molli*



Basic Flute Technique

B flat major *Bb duuri*



G minor *g molli*



Melodic minor • *Melodinen molli*

A minor *a molli*



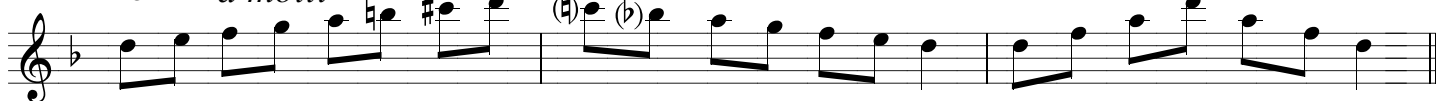
E minor *e molli*



B minor *h molli*



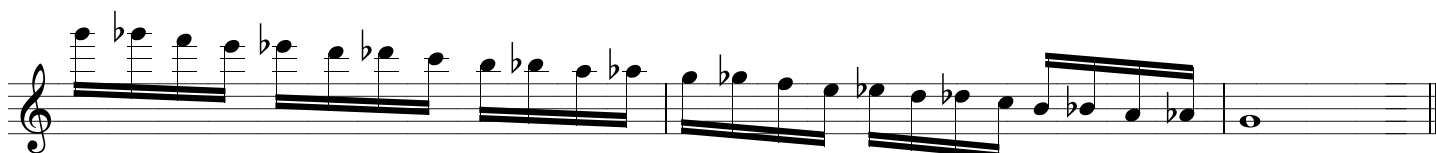
D minor *d molli*



G minor *g molli*



Chromatic scale • *Kromaattinen asteikko*



EXTENDED SCALES • ASTEIKKOJA LAAJEMMIN

C major
C duuri

Two staves of musical notation for the C major scale. The first staff shows the scale from C4 to C5. The second staff shows the scale from C5 down to C4. The notes are: C4, D4, E4, F4, G4, A4, B4, C5, B4, A4, G4, F4, E4, D4, C4.

Dominant seventh chord
Dominanttiseptimisointu

A minor, melodic
a molli, melodinen

Two staves of musical notation for the A minor melodic scale. The first staff shows the scale from A4 to A5. The second staff shows the scale from A5 down to A4. The notes are: A4, B4, C5, D5, E5, F5, G5, A5, G5, F5, E5, D5, C5, B4, A4. A natural sign is placed above the second staff.

A minor, harmonic
a molli, harmoninen

Two staves of musical notation for the A minor harmonic scale. The first staff shows the scale from A4 to A5. The second staff shows the scale from A5 down to A4. The notes are: A4, B4, C5, D5, E5, F5, G5, A5, G5, F5, E5, D5, C5, B4, A4. A natural sign is placed above the second staff.

G major
G duuri

Two staves of musical notation for the G major scale. The first staff shows the scale from G4 to G5. The second staff shows the scale from G5 down to G4. The notes are: G4, A4, B4, C5, D5, E5, F5, G5, F5, E5, D5, C5, B4, A4, G4.

E minor, melodic
e molli, melodinen

Two staves of musical notation for the E minor melodic scale. The first staff shows the scale from E4 to E5. The second staff shows the scale from E5 down to E4. The notes are: E4, F4, G4, A4, B4, C5, D5, E5, D5, C5, B4, A4, G4, F4, E4. A natural sign is placed above the second staff.

E minor, harmonic
e molli, harmoninen

Two staves of musical notation for the E minor harmonic scale. The first staff shows the scale from E4 to E5. The second staff shows the scale from E5 down to E4. The notes are: E4, F4, G4, A4, B4, C5, D5, E5, D5, C5, B4, A4, G4, F4, E4. A natural sign is placed above the second staff.

Basic Flute Technique

D major

D duuri

Two staves of musical notation for the D major scale. The first staff shows the ascending scale from D4 to D5. The second staff shows the descending scale from D5 to D4. The key signature has two sharps (F# and C#).

B minor, melodic

h molli, melodinen

Two staves of musical notation for the B minor melodic scale. The first staff shows the ascending scale from B4 to B5. The second staff shows the descending scale from B5 to B4. The key signature has two sharps (F# and C#). A circled 'b' is placed above the second staff to indicate a flat for the descending scale.

B minor, harmonic

h molli, harmoninen

Two staves of musical notation for the B minor harmonic scale. The first staff shows the ascending scale from B4 to B5. The second staff shows the descending scale from B5 to B4. The key signature has two sharps (F# and C#).

A major

A duuri

Two staves of musical notation for the A major scale. The first staff shows the ascending scale from A4 to A5. The second staff shows the descending scale from A5 to A4. The key signature has three sharps (F#, C#, G#).

F sharp minor, melodic

fis molli, melodinen

Two staves of musical notation for the F sharp minor melodic scale. The first staff shows the ascending scale from F#4 to F#5. The second staff shows the descending scale from F#5 to F#4. The key signature has three sharps (F#, C#, G#). A circled 'b' is placed above the second staff to indicate a flat for the descending scale.

F sharp minor, harmonic

fis molli, harmoninen

Two staves of musical notation for the F sharp minor harmonic scale. The first staff shows the ascending scale from F#4 to F#5. The second staff shows the descending scale from F#5 to F#4. The key signature has three sharps (F#, C#, G#).

Basic Flute Technique

E major

E duuri

Two staves of musical notation for the E major scale in diatonic form. The first staff shows the ascending scale, and the second staff shows the descending scale. The key signature has three sharps (F#, C#, G#).

C sharp minor, melodic

cis molli, melodinen

Two staves of musical notation for the C sharp minor scale in melodic form. The first staff shows the ascending scale, and the second staff shows the descending scale. The key signature has three sharps (F#, C#, G#). A circled 'b' is placed above the second measure of the descending scale.

C sharp minor, harmonic

cis molli, harmoninen

Two staves of musical notation for the C sharp minor scale in harmonic form. The first staff shows the ascending scale, and the second staff shows the descending scale. The key signature has three sharps (F#, C#, G#).

H major

H duuri

Two staves of musical notation for the H major scale in diatonic form. The first staff shows the ascending scale, and the second staff shows the descending scale. The key signature has four sharps (F#, C#, G#, D#).

G sharp minor, melodic

gis molli, melodinen

Two staves of musical notation for the G sharp minor scale in melodic form. The first staff shows the ascending scale, and the second staff shows the descending scale. The key signature has four sharps (F#, C#, G#, D#). Circled 'b' and 'x' symbols are placed above the second and third measures of the descending scale.

G sharp minor, harmonic

gis molli, harmoninen

Two staves of musical notation for the G sharp minor scale in harmonic form. The first staff shows the ascending scale, and the second staff shows the descending scale. The key signature has four sharps (F#, C#, G#, D#). Circled 'x' symbols are placed above the second and third measures of the descending scale.

Basic Flute Technique

F sharp major

Fis duuri

Two staves of musical notation for F sharp major. The first staff contains a melodic exercise starting with a treble clef and a key signature of three sharps (F#, C#, G#). The second staff continues the exercise, ending with a double bar line.

D sharp minor, melodic

dis molli, melodinen

Two staves of musical notation for D sharp minor. The first staff contains a melodic exercise starting with a treble clef and a key signature of three sharps (F#, C#, G#). The second staff continues the exercise, ending with a double bar line.

D sharp minor, harmonic

dis molli, harmoninen

Two staves of musical notation for D sharp minor. The first staff contains a harmonic exercise starting with a treble clef and a key signature of three sharps (F#, C#, G#). The second staff continues the exercise, ending with a double bar line.

G flat major

Ges duuri

Two staves of musical notation for G flat major. The first staff contains a melodic exercise starting with a treble clef and a key signature of three flats (Bb, Eb, Ab). The second staff continues the exercise, ending with a double bar line.

E flat minor, melodic

es molli, melodinen

Two staves of musical notation for E flat minor. The first staff contains a melodic exercise starting with a treble clef and a key signature of three flats (Bb, Eb, Ab). The second staff continues the exercise, ending with a double bar line.

E flat minor, harmonic

es molli, harmoninen

Two staves of musical notation for E flat minor. The first staff contains a harmonic exercise starting with a treble clef and a key signature of three flats (Bb, Eb, Ab). The second staff continues the exercise, ending with a double bar line.

Basic Flute Technique

D flat major

Des duuri

Two staves of musical notation for D flat major, Des duuri. The first staff contains two measures of eighth-note runs. The second staff contains two measures of eighth-note runs, ending with a whole note D-flat.

B flat minor, melodic

b molli, melodinen

One staff of musical notation for B flat minor, melodic, b molli, melodinen. The staff contains two measures of eighth-note runs, with a (b) marking above the second measure.

B flat minor, harmonic

b molli, harmoninen

Two staves of musical notation for B flat minor, harmonic, b molli, harmoninen. The first staff contains two measures of eighth-note runs. The second staff contains two measures of eighth-note runs, ending with a whole note D-flat.

A flat major

As duuri

Two staves of musical notation for A flat major, As duuri. The first staff contains two measures of eighth-note runs. The second staff contains two measures of eighth-note runs, ending with a whole note A-flat.

F minor, melodic

f molli, melodinen

One staff of musical notation for F minor, melodic, f molli, melodinen. The staff contains two measures of eighth-note runs, with a (b) marking above the second measure.

F minor, harmonic

f molli, harmoninen

Two staves of musical notation for F minor, harmonic, f molli, harmoninen. The first staff contains two measures of eighth-note runs. The second staff contains two measures of eighth-note runs, ending with a whole note F.

Basic Flute Technique

E flat major

Es duuri

C minor, melodic

c molli, melodinen

C minor, harmonic

c molli, harmoninen

B flat major

Bb duuri

G minor, melodic

g molli, melodinen

G minor, harmonic

g molli, harmoninen

Basic Flute Technique

F major

F duuri

Two staves of musical notation for the F major scale. The first staff shows the ascending scale, and the second staff shows the descending scale. The key signature has one flat (Bb).

D minor, melodic

d molli, melodinen

One staff of musical notation for the D minor scale, melodic version. The key signature has two flats (Bb, Eb).

D minor, harmonic

d molli, harmoninen

Two staves of musical notation for the D minor scale, harmonic version. The first staff shows the ascending scale, and the second staff shows the descending scale. The key signature has two flats (Bb, Eb).

Whole tone scale 1

kokosävelasteikko 1

One staff of musical notation for Whole tone scale 1. The scale consists of six notes: C, D, E, F#, G#, A#. Triplet markings are present over the first and last notes of both the ascending and descending directions.

Whole tone scale 2

kokosävelasteikko 2

One staff of musical notation for Whole tone scale 2. The scale consists of six notes: C, D, E, F, G, A. Triplet markings are present over the first and last notes of both the ascending and descending directions.

Blues scale

blues-asteikko

One staff of musical notation for the Blues scale. The scale consists of seven notes: C, D, Eb, E, F, G. Triplet markings are present over the first and last notes of both the ascending and descending directions.

Chromatic scale

kromaattinen asteikko

Two staves of musical notation for the Chromatic scale. The first staff shows the ascending scale, and the second staff shows the descending scale. Triplet markings are present over the first and last notes of both directions.