



Richard Kearns

Arranger, Composer, Publisher, Teacher

Ireland, Ballybofey, Donegal

About the artist

Studied Piano and classical guitar

Most stuff in Concert pitch.. HOWEVER

If you need PDFs transposed email me...

If you make a comment please leave an Email

If you wish to play any of my work in public there is usually no problem nor any costs. Just email me to let me know. All works played in public must give me credit for the composition or the arrangement....

I'm sorry I only speak Spanish or English

About the piece



Title: Jelly Beans
Composer: Kearns, Richard
Arranger: Kearns, Richard
Licence: Richard Kearns © All rights reserved
Publisher: Kearns, Richard
Instrumentation: Woodwind quintet : Flute, Clarinet, Oboe, Horn, Bassoon
Style: Classical

Richard Kearns on [free-scores.com](http://www.free-scores.com)

<http://www.free-scores.com/Download-PDF-Sheet-Music-guiriel.htm>

- Donate / Financial compensation
- Download other works by this artist
- Listen to his pieces
- Contact the artist
- Write feedback comments
- Share your mp3 recording of this piece



This work is not Public Domain. You must contact the artist for any use outside the private area.

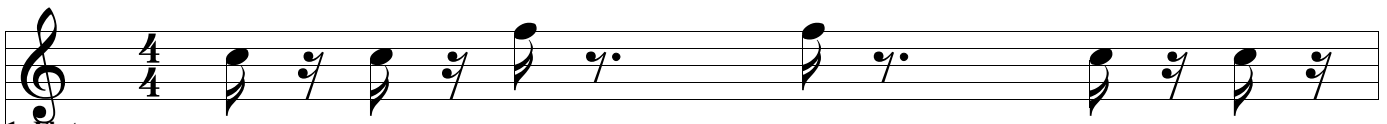
Jelly Beans

Study

Richard Kearns
Copyright © 2010 by

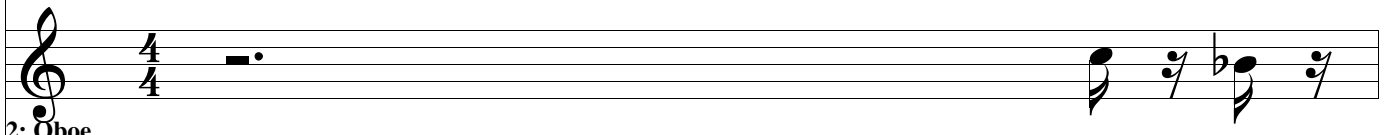
100

1



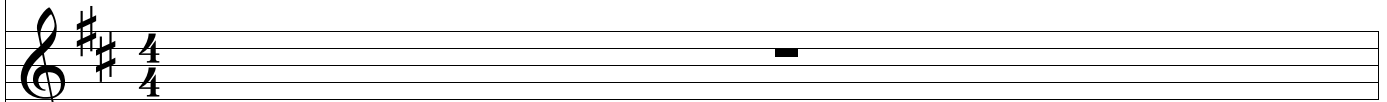
1: Flute

Musical staff for Flute 1, 4/4 time signature. The staff contains a sequence of eighth notes: G4, A4, B4, C5, D5, E5, F5, G5, A5, B5, C6, D6, E6, F6, G6, A6, B6, C7.



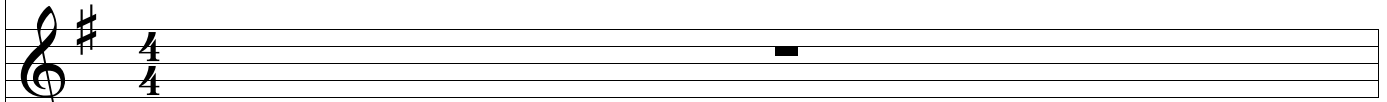
2: Oboe

Musical staff for Oboe 2, 4/4 time signature. The staff contains a whole note G4, followed by a whole rest, and then a sequence of eighth notes: G4, A4, B4, C5, D5, E5, F5, G5, A5, B5, C6, D6, E6, F6, G6, A6, B6, C7.



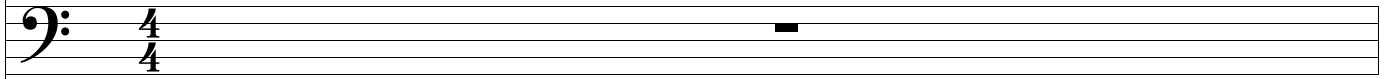
3: B-flat Clarinet

Musical staff for B-flat Clarinet 3, 4/4 time signature. The staff contains a whole rest.



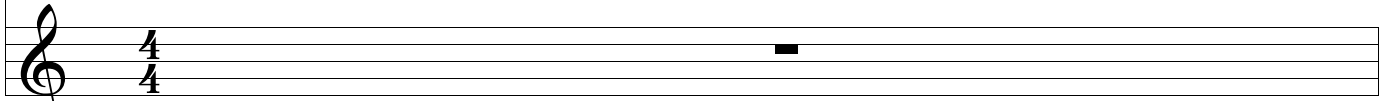
4: French Horn

Musical staff for French Horn 4, 4/4 time signature. The staff contains a whole rest.



5: Bassoon

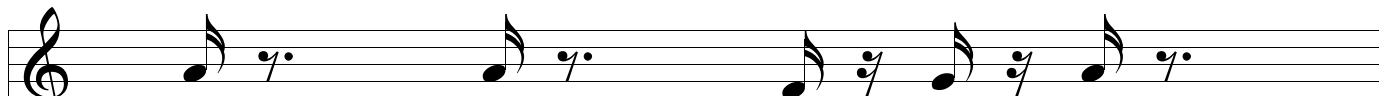
Musical staff for Bassoon 5, 4/4 time signature. The staff contains a whole rest.



7: Track 7

Musical staff for Track 7, 4/4 time signature. The staff contains a whole rest.

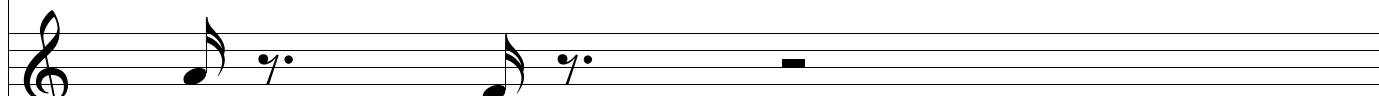
2



1: Flute

Musical staff for Flute 1, showing a sequence of eighth notes with stems pointing up and down, and a final eighth note with a stem pointing up.

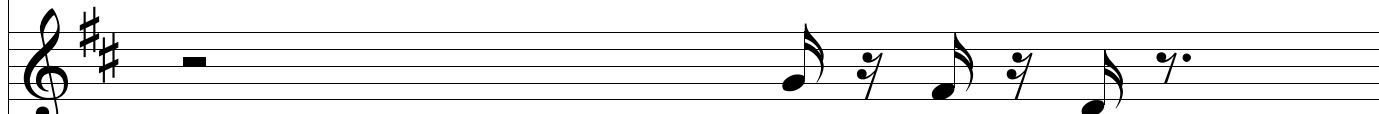
1: Flute



2: Oboe

Musical staff for Oboe 2, showing a sequence of eighth notes with stems pointing up and down, and a final eighth note with a stem pointing up, followed by a whole rest.

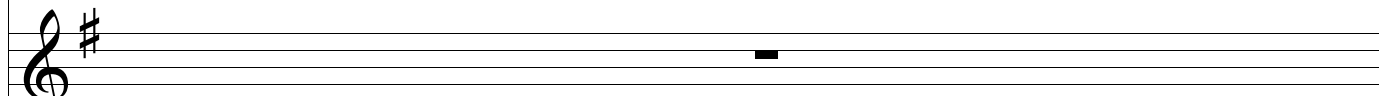
2: Oboe



3: B-flat Clarinet

Musical staff for B-flat Clarinet 3, showing a whole rest followed by a sequence of eighth notes with stems pointing up and down, and a final eighth note with a stem pointing up.

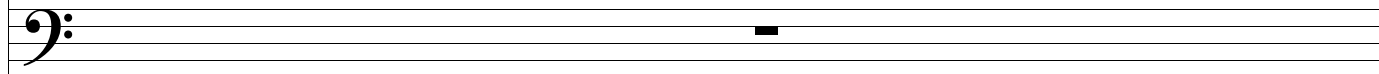
3: B-flat Clarinet



4: French Horn

Musical staff for French Horn 4, showing a whole rest.

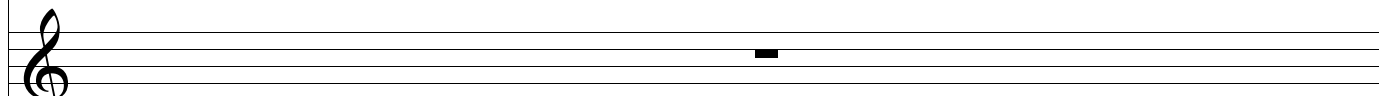
4: French Horn



5: Bassoon

Musical staff for Bassoon 5, showing a whole rest.

5: Bassoon



7: Track

Musical staff for Track 7, showing a whole rest.

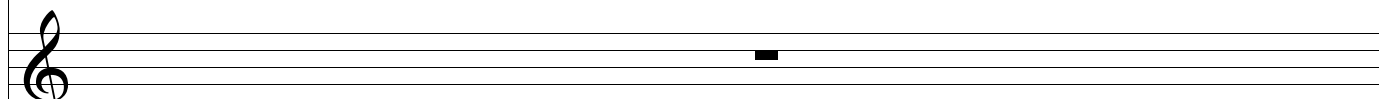
7: Track

3



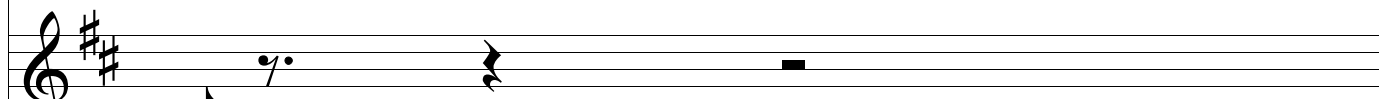
1: Flute

Musical staff for Flute 1, showing a sequence of eighth notes with stems pointing up and down, and dotted eighth notes.



2: Oboe

Musical staff for Oboe 2, showing a whole rest.



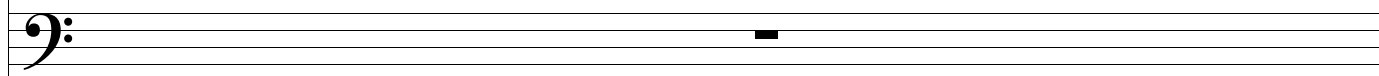
3: B-flat Clarinet

Musical staff for B-flat Clarinet, showing a sequence of eighth notes with stems pointing up and down, and dotted eighth notes.



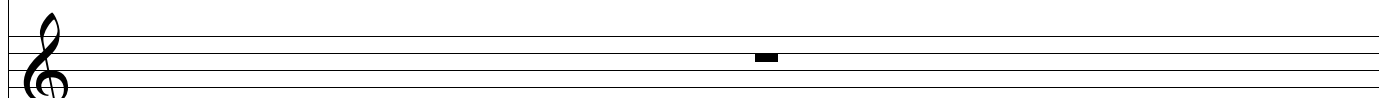
4: French Horn

Musical staff for French Horn, showing a sequence of eighth notes with stems pointing up and down, and dotted eighth notes.



5: Bassoon

Musical staff for Bassoon, showing a whole rest.

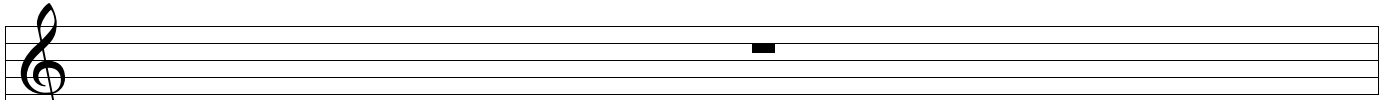


7: Track

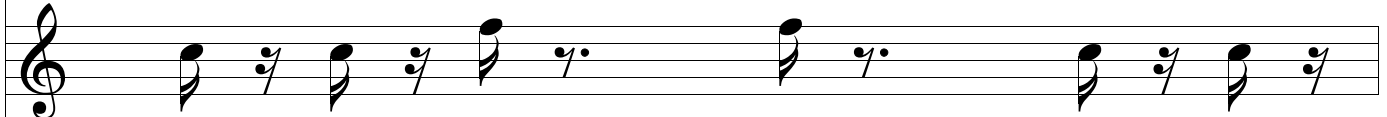
Musical staff for Track 7, showing a whole rest.

7

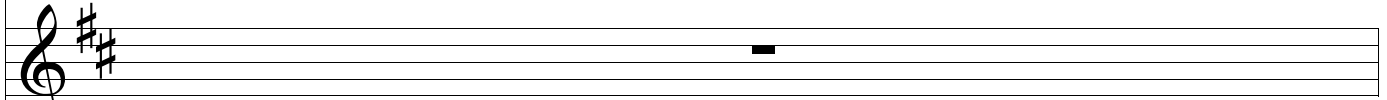
4



1: Flute



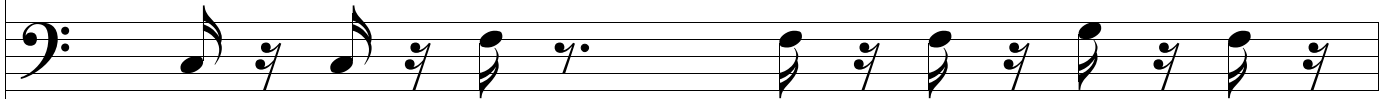
2: Oboe



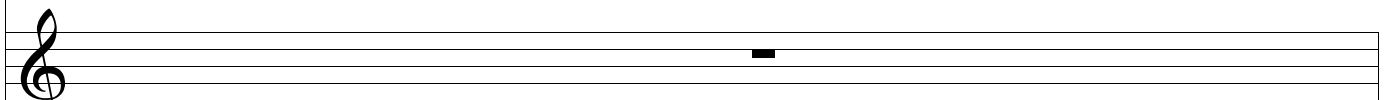
3: B-flat
Clarinet



4: French
Horn

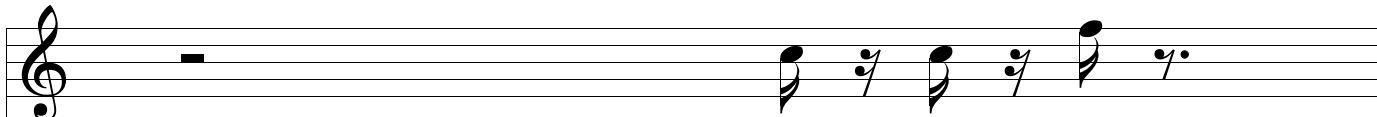


5:
Bassoon



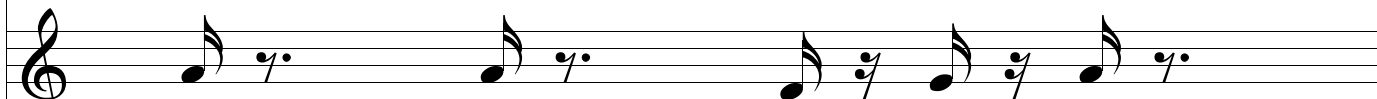
7: Track
7

5



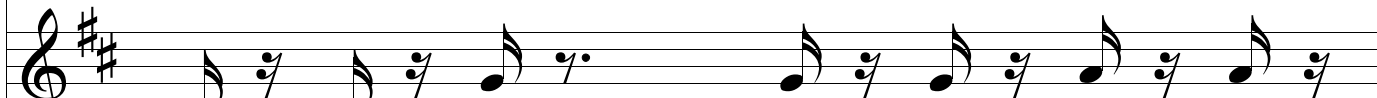
1: Flute

Musical staff for Flute 1, showing a whole rest followed by a sequence of eighth notes: G4, A4, B4, C5, B4, A4, G4.



2: Oboe

Musical staff for Oboe 2, showing a sequence of eighth notes: G4, A4, B4, C5, B4, A4, G4.



3: B-flat Clarinet

Musical staff for B-flat Clarinet 3, showing a sequence of eighth notes: G4, A4, B4, C5, B4, A4, G4.



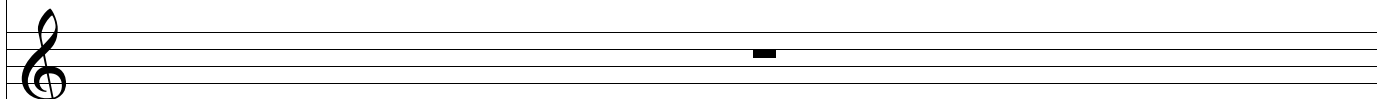
4: French Horn

Musical staff for French Horn 4, showing a sequence of eighth notes: G4, A4, B4, C5, B4, A4, G4.



5: Bassoon

Musical staff for Bassoon 5, showing a sequence of eighth notes: G4, A4, B4, C5, B4, A4, G4.

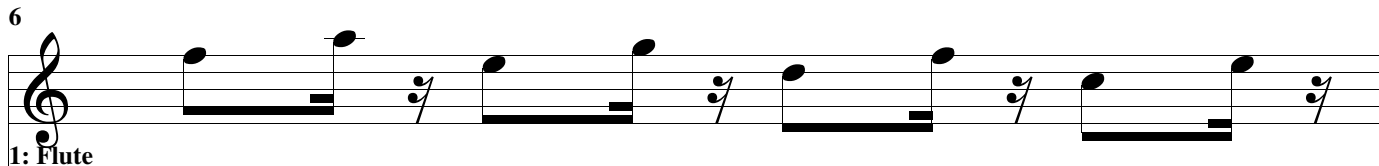


7: Track

Musical staff for Track 7, showing a whole rest.

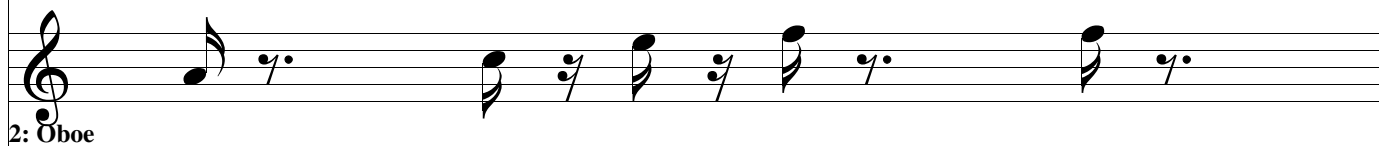
7

6



1: Flute

Musical staff for Flute 1, showing a sequence of eighth notes with stems pointing down, starting on a G4 and moving up stepwise to a D5.



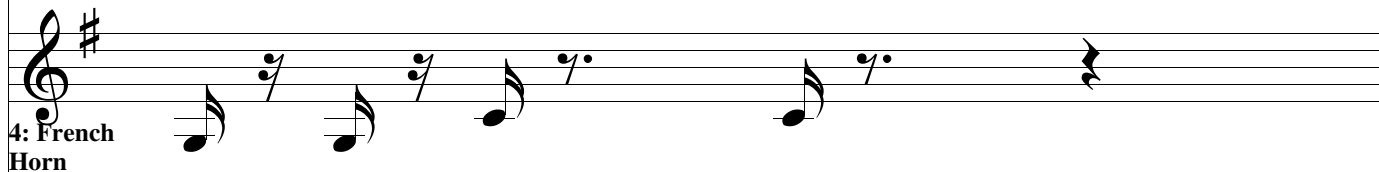
2: Oboe

Musical staff for Oboe, showing a sequence of eighth notes with stems pointing down, starting on a G4 and moving up stepwise to a D5.



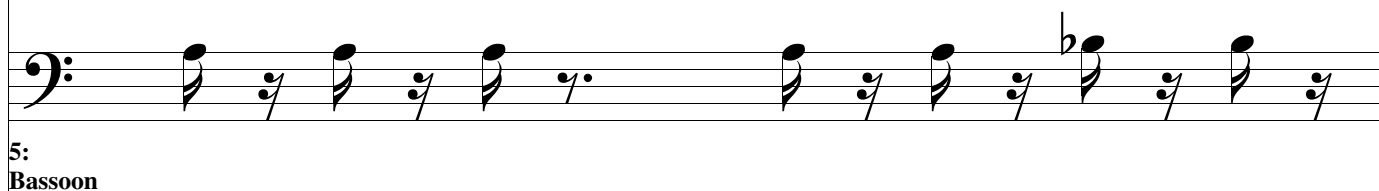
3: B-flat Clarinet

Musical staff for B-flat Clarinet, showing a sequence of eighth notes with stems pointing down, starting on a G4 and moving up stepwise to a D5.



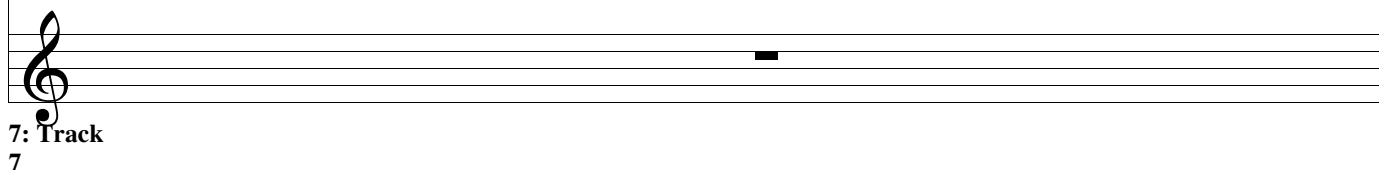
4: French Horn

Musical staff for French Horn, showing a sequence of eighth notes with stems pointing down, starting on a G4 and moving up stepwise to a D5.



5: Bassoon

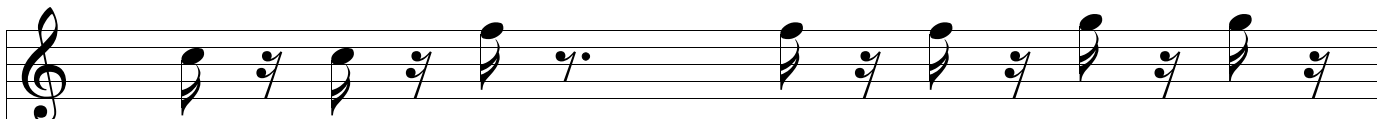
Musical staff for Bassoon, showing a sequence of eighth notes with stems pointing down, starting on a G4 and moving up stepwise to a D5.



7: Track

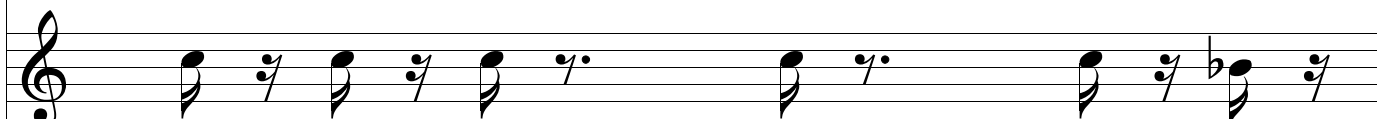
Musical staff for Track 7, showing a sequence of eighth notes with stems pointing down, starting on a G4 and moving up stepwise to a D5.

7



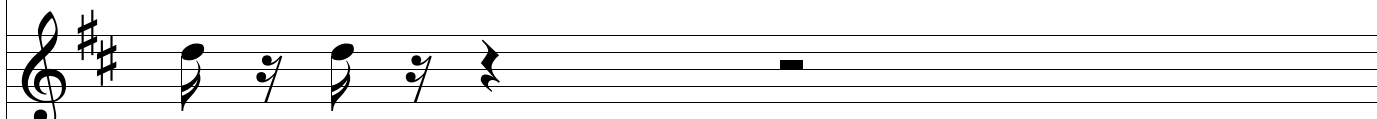
1: Flute

Musical staff for Flute 1, showing a sequence of eighth notes with stems pointing up and down, and a dotted quarter note.



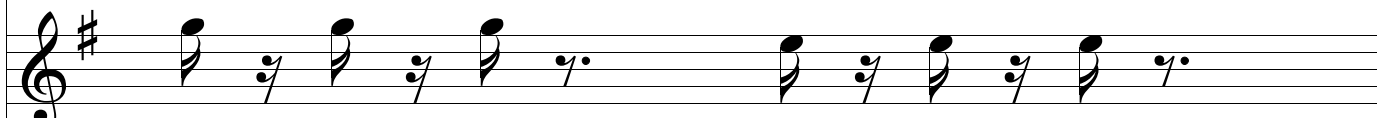
2: Oboe

Musical staff for Oboe 2, showing a sequence of eighth notes with stems pointing up and down, and a dotted quarter note.




3: B-flat Clarinet

Musical staff for B-flat Clarinet 3, showing a sequence of eighth notes with stems pointing up and down, and a dotted quarter note.



4: French Horn

Musical staff for French Horn 4, showing a sequence of eighth notes with stems pointing up and down, and a dotted quarter note.



5: Bassoon

Musical staff for Bassoon 5, showing a sequence of eighth notes with stems pointing up and down, and a dotted quarter note.



7: Track

Musical staff for Track 7, showing a sequence of eighth notes with stems pointing up and down, and a dotted quarter note.

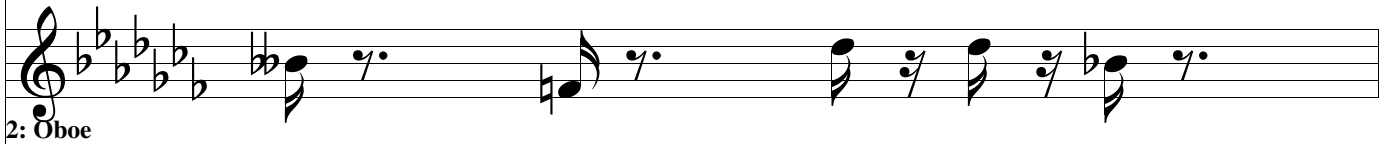
7

8



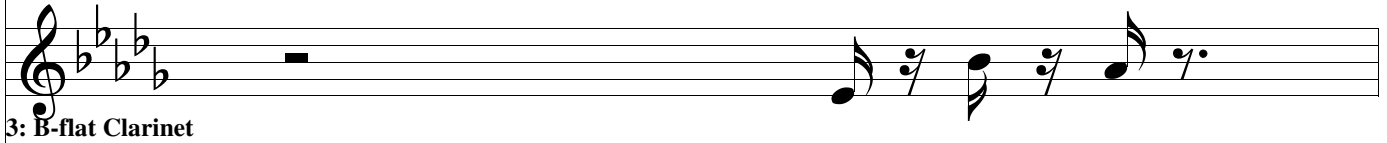
1: Flute

Musical staff for Flute 1, starting with a treble clef and a key signature of three flats. The staff contains a sequence of notes: a half note G4, a quarter note F4, a quarter note E4, a quarter note D4, a quarter note C4, a quarter rest, a quarter note B3, a quarter note A3, a quarter note G3, a quarter note F3, a quarter note E3, a quarter note D3, and a quarter note C3.



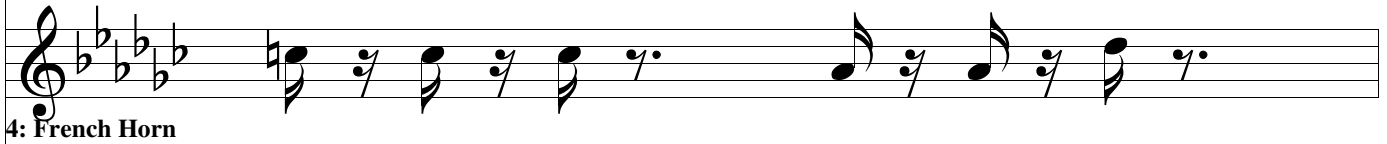
2: Oboe

Musical staff for Oboe 2, starting with a treble clef and a key signature of three flats. The staff contains a sequence of notes: a half note G4, a quarter note F4, a quarter note E4, a quarter note D4, a quarter note C4, a quarter rest, a quarter note B3, a quarter note A3, a quarter note G3, a quarter note F3, a quarter note E3, a quarter note D3, and a quarter note C3.



3: B-flat Clarinet

Musical staff for B-flat Clarinet 3, starting with a treble clef and a key signature of three flats. The staff contains a sequence of notes: a half note G4, a quarter rest, a quarter note F4, a quarter note E4, a quarter note D4, a quarter note C4, a quarter note B3, a quarter note A3, a quarter note G3, a quarter note F3, a quarter note E3, a quarter note D3, and a quarter note C3.



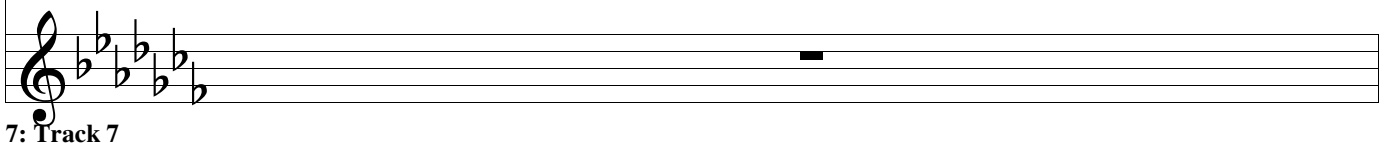
4: French Horn

Musical staff for French Horn 4, starting with a treble clef and a key signature of three flats. The staff contains a sequence of notes: a half note G4, a quarter note F4, a quarter note E4, a quarter note D4, a quarter note C4, a quarter note B3, a quarter note A3, a quarter note G3, a quarter note F3, a quarter note E3, a quarter note D3, and a quarter note C3.



5: Bassoon

Musical staff for Bassoon 5, starting with a bass clef and a key signature of three flats. The staff contains a sequence of notes: a half note G4, a quarter note F4, a quarter note E4, a quarter note D4, a quarter note C4, a quarter note B3, a quarter note A3, a quarter note G3, a quarter note F3, a quarter note E3, a quarter note D3, and a quarter note C3.



7: Track 7

Musical staff for Track 7, starting with a treble clef and a key signature of three flats. The staff contains a sequence of notes: a half note G4, a quarter rest, a quarter note F4, a quarter note E4, a quarter note D4, a quarter note C4, a quarter note B3, a quarter note A3, a quarter note G3, a quarter note F3, a quarter note E3, a quarter note D3, and a quarter note C3.

9



1: Flute

Musical staff for Flute, showing a sequence of notes and rests in a key signature of three flats (B-flat, E-flat, A-flat).



2: Oboe

Musical staff for Oboe, showing a sequence of notes and rests in a key signature of three flats (B-flat, E-flat, A-flat).



3: B-flat Clarinet

Musical staff for B-flat Clarinet, showing a sequence of notes and rests in a key signature of three flats (B-flat, E-flat, A-flat).



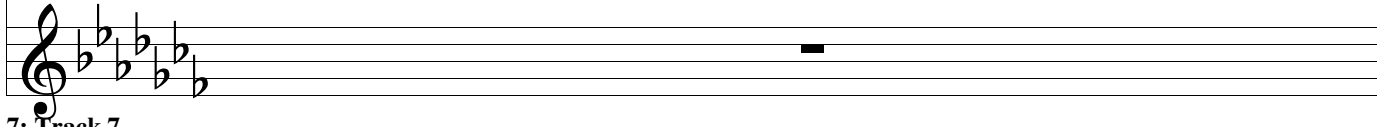
4: French Horn

Musical staff for French Horn, showing a sequence of notes and rests in a key signature of three flats (B-flat, E-flat, A-flat).



5: Bassoon

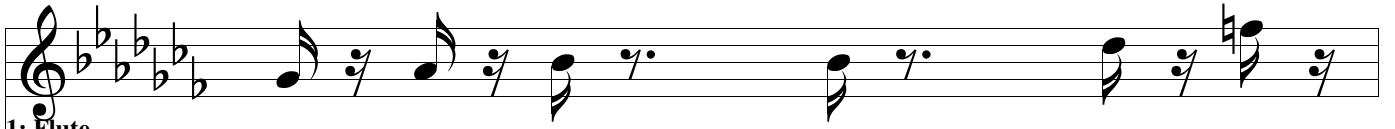
Musical staff for Bassoon, showing a sequence of notes and rests in a key signature of three flats (B-flat, E-flat, A-flat).



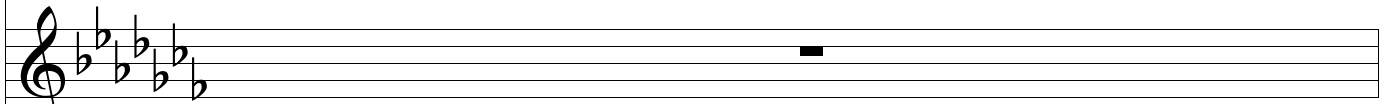
7: Track 7

Musical staff for Track 7, showing a sequence of notes and rests in a key signature of three flats (B-flat, E-flat, A-flat).

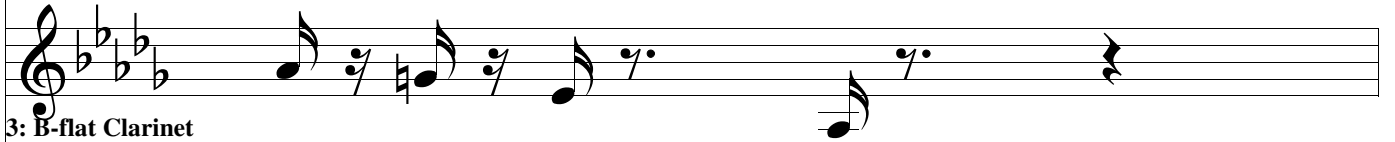
10



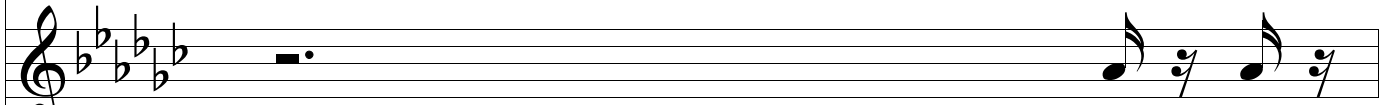
1: Flute



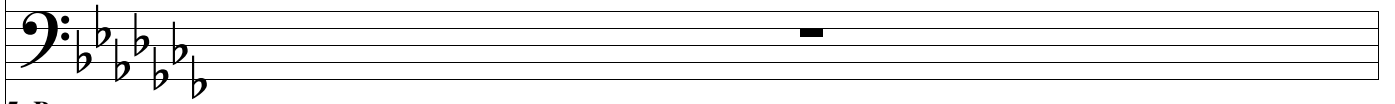
2: Oboe



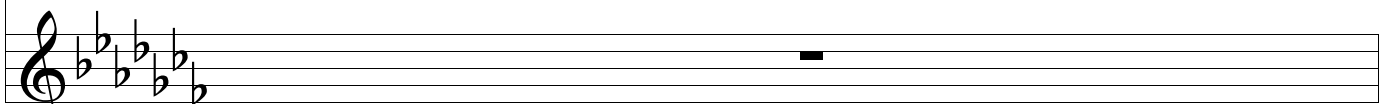
3: B-flat Clarinet



4: French Horn



5: Bassoon



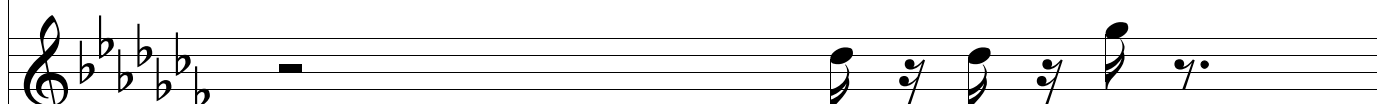
7: Track 7

11



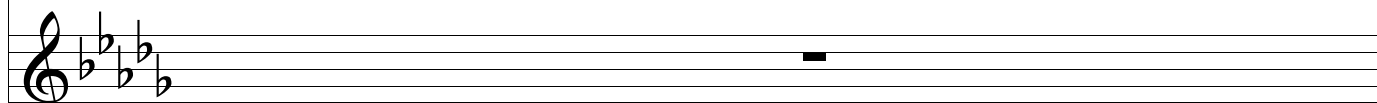
1: Flute

Musical staff for Flute 1, showing a sequence of notes and rests in a key signature of three flats (B-flat, E-flat, A-flat).




2: Oboe

Musical staff for Oboe 2, showing a sequence of notes and rests in a key signature of three flats (B-flat, E-flat, A-flat).



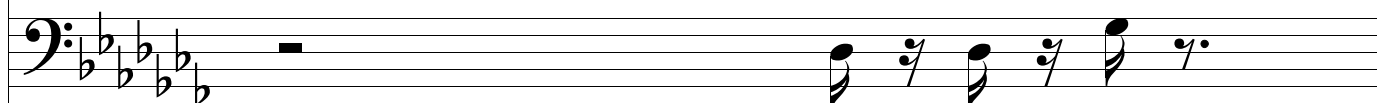
3: B-flat Clarinet

Musical staff for B-flat Clarinet 3, showing a sequence of notes and rests in a key signature of three flats (B-flat, E-flat, A-flat).



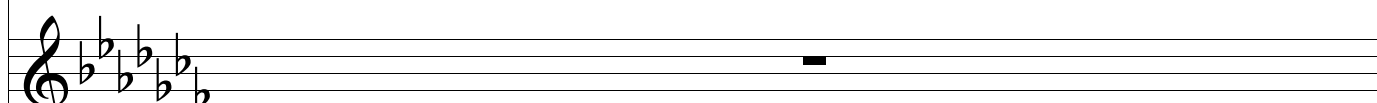
4: French Horn

Musical staff for French Horn 4, showing a sequence of notes and rests in a key signature of three flats (B-flat, E-flat, A-flat).



5: Bassoon

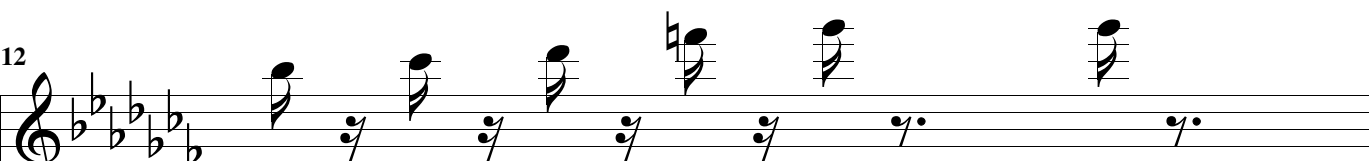
Musical staff for Bassoon 5, showing a sequence of notes and rests in a key signature of three flats (B-flat, E-flat, A-flat).



7: Track 7

Musical staff for Track 7, showing a sequence of notes and rests in a key signature of three flats (B-flat, E-flat, A-flat).

12



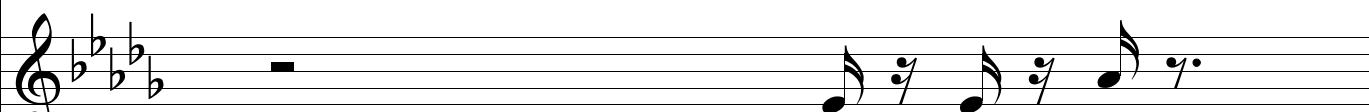
1: Flute

Musical staff for Flute 1, showing a sequence of notes and rests in a key signature of three flats (B-flat, E-flat, A-flat).



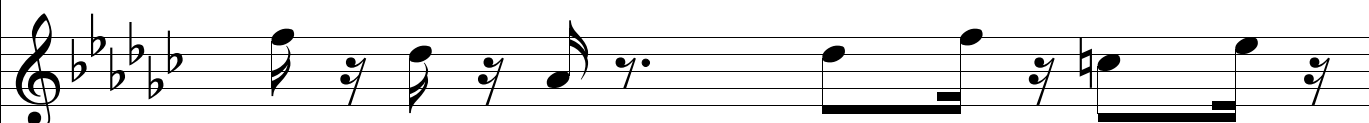
2: Oboe

Musical staff for Oboe 2, showing a sequence of notes and rests in a key signature of three flats (B-flat, E-flat, A-flat).




3: B-flat Clarinet

Musical staff for B-flat Clarinet 3, showing a sequence of notes and rests in a key signature of three flats (B-flat, E-flat, A-flat).



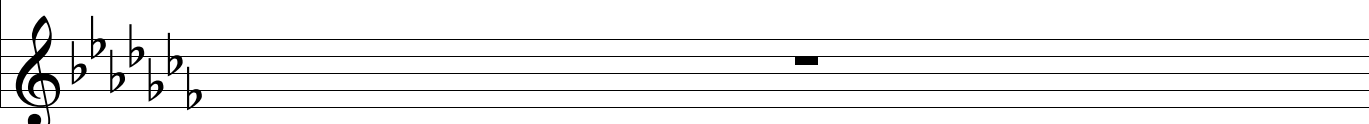
4: French Horn

Musical staff for French Horn 4, showing a sequence of notes and rests in a key signature of three flats (B-flat, E-flat, A-flat).



5: Bassoon

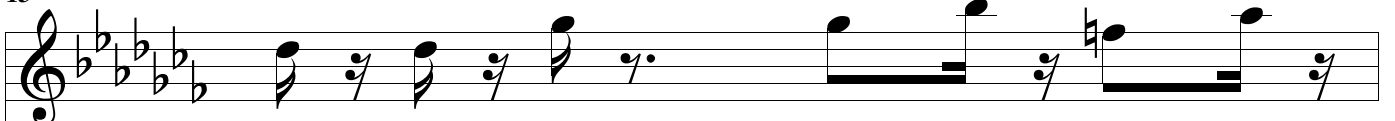
Musical staff for Bassoon 5, showing a sequence of notes and rests in a key signature of three flats (B-flat, E-flat, A-flat).



7: Track 7

Musical staff for Track 7, showing a sequence of notes and rests in a key signature of three flats (B-flat, E-flat, A-flat).

13



Musical staff for Flute 1, featuring a treble clef and a key signature of three flats. The staff contains a sequence of notes and rests, including eighth and quarter notes.

1: Flute



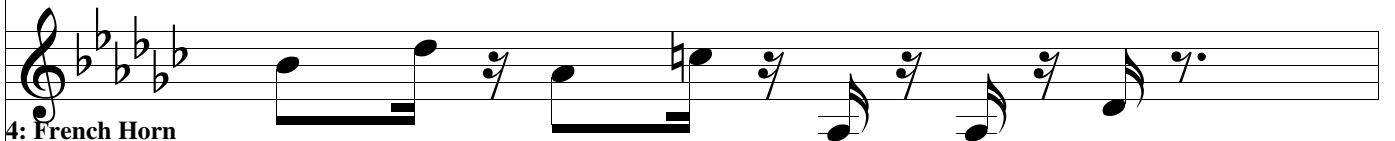
Musical staff for Oboe 2, featuring a treble clef and a key signature of three flats. The staff contains a sequence of notes and rests, including eighth and quarter notes.

2: Oboe



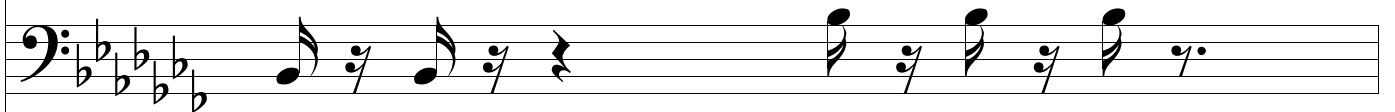
Musical staff for B-flat Clarinet 3, featuring a treble clef and a key signature of three flats. The staff contains a sequence of notes and rests, including eighth and quarter notes.

3: B-flat Clarinet



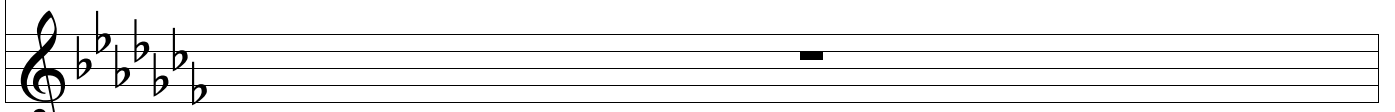
Musical staff for French Horn 4, featuring a treble clef and a key signature of three flats. The staff contains a sequence of notes and rests, including eighth and quarter notes.

4: French Horn



Musical staff for Bassoon 5, featuring a bass clef and a key signature of three flats. The staff contains a sequence of notes and rests, including eighth and quarter notes.

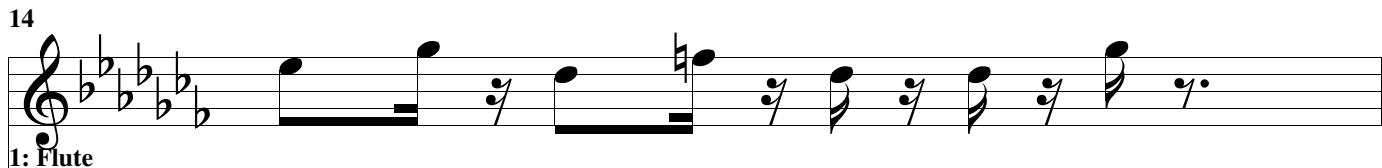
5: Bassoon



Musical staff for Track 7, featuring a treble clef and a key signature of three flats. The staff contains a sequence of notes and rests, including eighth and quarter notes.

7: Track 7

14



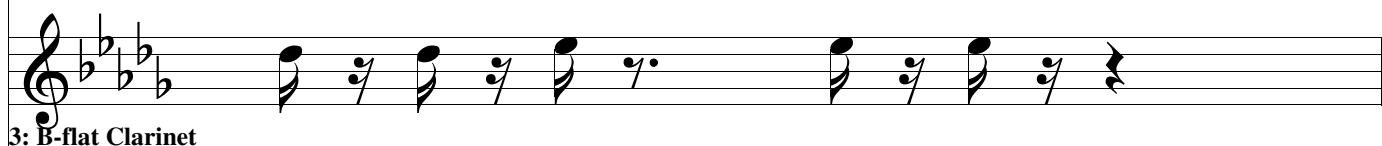
1: Flute

Musical staff for Flute 1, showing a sequence of notes and rests in a treble clef with a key signature of three flats.



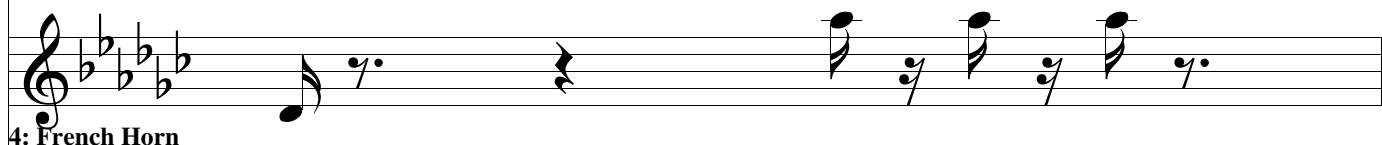
2: Oboe

Musical staff for Oboe 2, showing a sequence of notes and rests in a treble clef with a key signature of three flats.



3: B-flat Clarinet

Musical staff for B-flat Clarinet 3, showing a sequence of notes and rests in a treble clef with a key signature of three flats.



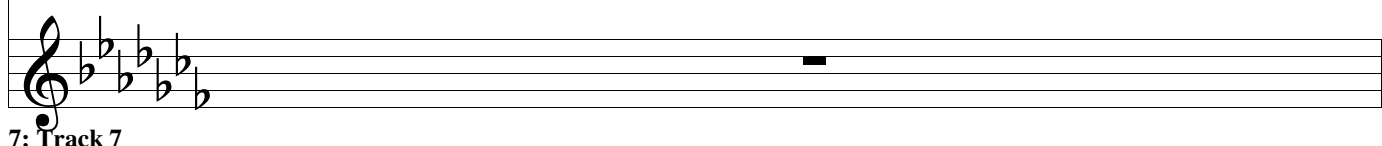
4: French Horn

Musical staff for French Horn 4, showing a sequence of notes and rests in a treble clef with a key signature of three flats.



5: Bassoon

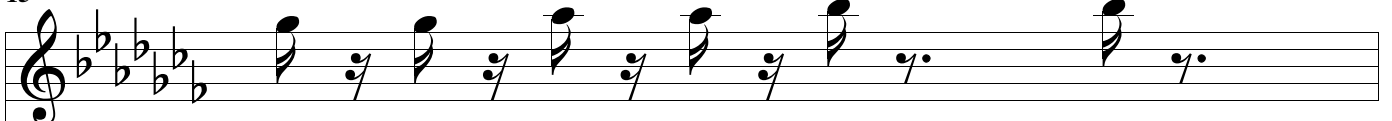
Musical staff for Bassoon 5, showing a sequence of notes and rests in a bass clef with a key signature of three flats.



7: Track 7

Musical staff for Track 7, showing a sequence of notes and rests in a treble clef with a key signature of three flats.

15



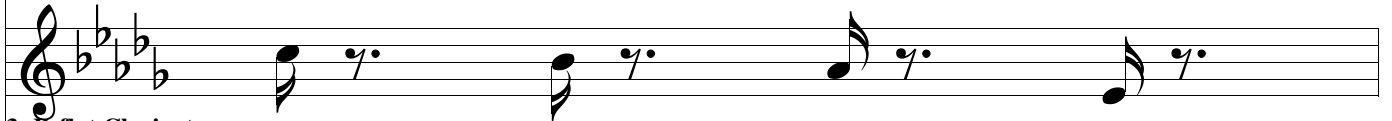
Musical staff for Flute 1, featuring a treble clef, a key signature of three flats (B-flat, E-flat, A-flat), and a 2/4 time signature. The staff contains a sequence of eighth notes with stems pointing up, followed by quarter notes with stems pointing down.

1: Flute



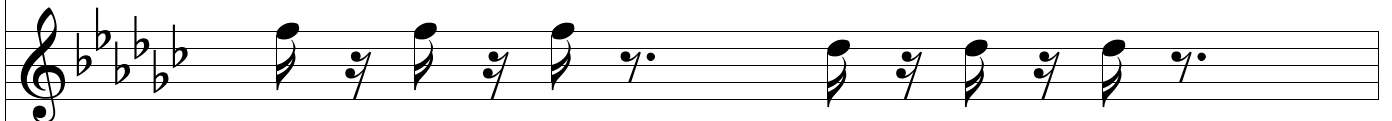
Musical staff for Oboe 2, featuring a treble clef, a key signature of three flats, and a 2/4 time signature. The staff contains a sequence of eighth notes with stems pointing up, followed by quarter notes with stems pointing down.

2: Oboe



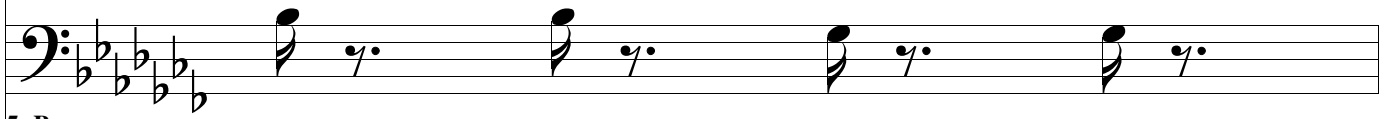
Musical staff for B-flat Clarinet 3, featuring a treble clef, a key signature of three flats, and a 2/4 time signature. The staff contains a sequence of eighth notes with stems pointing up, followed by quarter notes with stems pointing down.

3: B-flat Clarinet



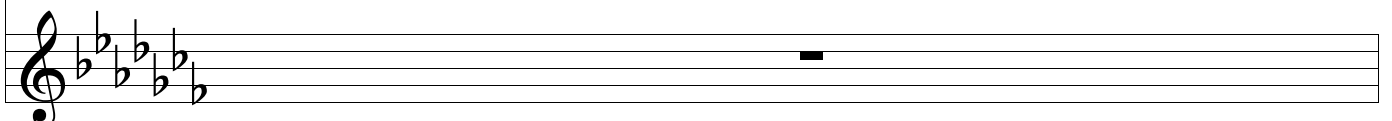
Musical staff for French Horn 4, featuring a treble clef, a key signature of three flats, and a 2/4 time signature. The staff contains a sequence of eighth notes with stems pointing up, followed by quarter notes with stems pointing down.

4: French Horn



Musical staff for Bassoon 5, featuring a bass clef, a key signature of three flats, and a 2/4 time signature. The staff contains a sequence of eighth notes with stems pointing up, followed by quarter notes with stems pointing down.

5: Bassoon



Musical staff for Track 7, featuring a treble clef, a key signature of three flats, and a 2/4 time signature. The staff contains a sequence of eighth notes with stems pointing up, followed by quarter notes with stems pointing down.

7: Track 7

17



1: Flute

Musical staff for Flute 1, showing a sequence of notes: G4, A4, B4, C5, D5, E5, F5, G5.



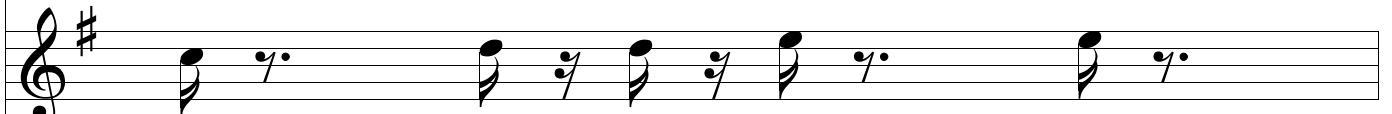
2: Oboe

Musical staff for Oboe 2, showing a sequence of notes: G4, A4, B4, C5, D5, E5, F5, G5.



3: B-flat Clarinet

Musical staff for B-flat Clarinet 3, showing a sequence of notes: G4, A4, B4, C5, D5, E5, F5, G5.



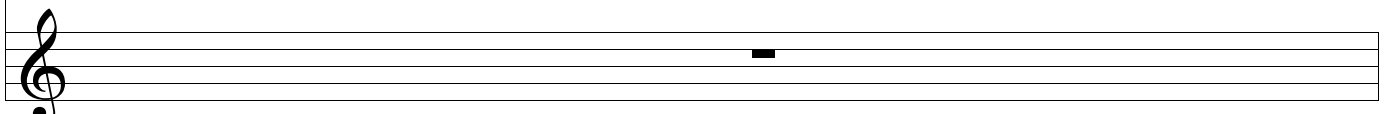
4: French Horn

Musical staff for French Horn 4, showing a sequence of notes: G4, A4, B4, C5, D5, E5, F5, G5.



5: Bassoon

Musical staff for Bassoon 5, showing a sequence of notes: G4, A4, B4, C5, D5, E5, F5, G5.

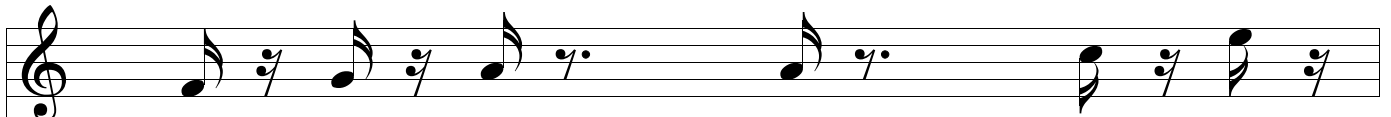


7: Track

Musical staff for Track 7, showing a sequence of notes: G4, A4, B4, C5, D5, E5, F5, G5.

7

18



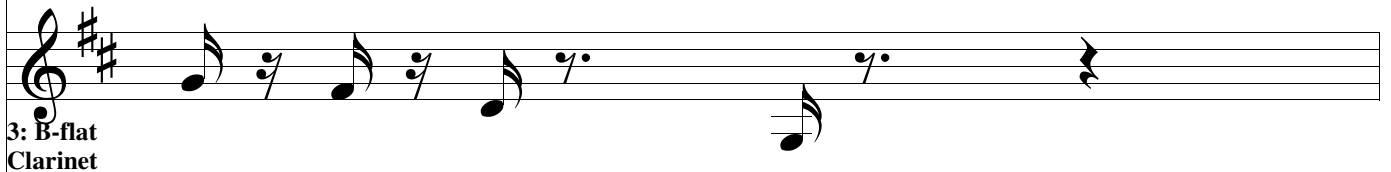
1: Flute

Musical staff for Flute 1, showing a sequence of eighth notes with beams and rests.



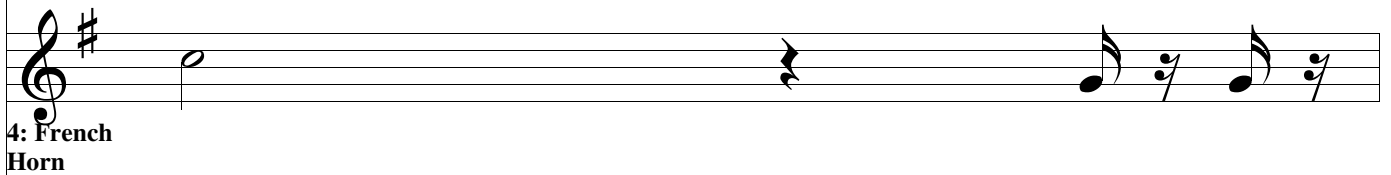
2: Oboe

Musical staff for Oboe 2, showing a sequence of quarter notes.



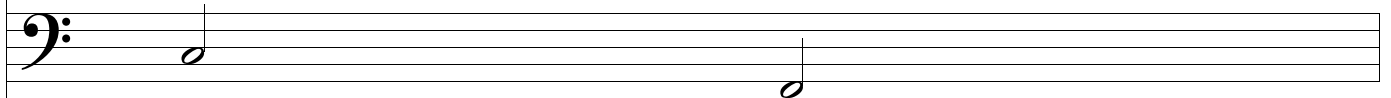
3: B-flat Clarinet

Musical staff for B-flat Clarinet 3, showing a sequence of eighth notes with beams and rests.



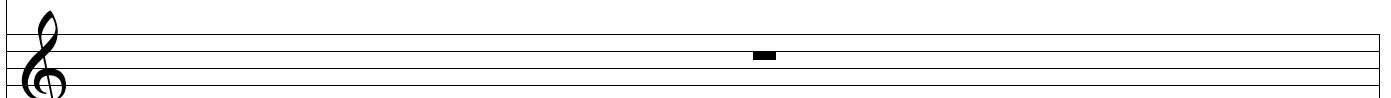
4: French Horn

Musical staff for French Horn 4, showing a sequence of quarter notes and eighth notes with beams.



5: Bassoon

Musical staff for Bassoon 5, showing a sequence of quarter notes.

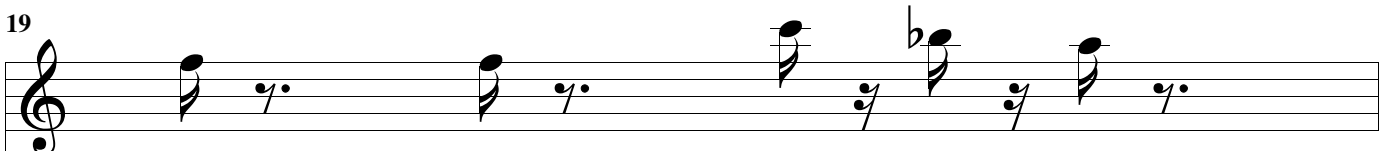


7: Track

Musical staff for Track 7, showing a sequence of quarter notes.

7

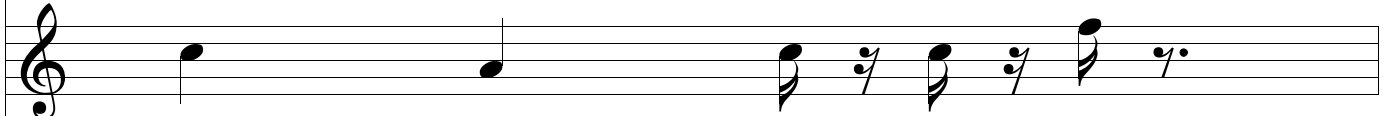
19



1: Flute

Musical staff for Flute 1, showing a sequence of eighth notes with rests.

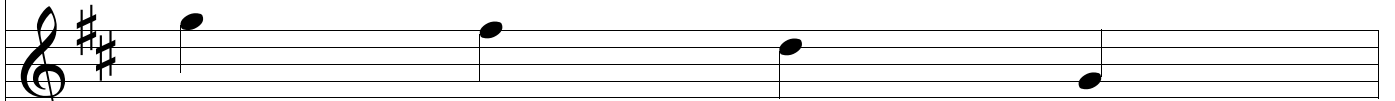
1: Flute



2: Oboe

Musical staff for Oboe 2, showing a sequence of notes and rests.


2: Oboe



3: B-flat Clarinet

Musical staff for B-flat Clarinet 3, showing a sequence of notes.

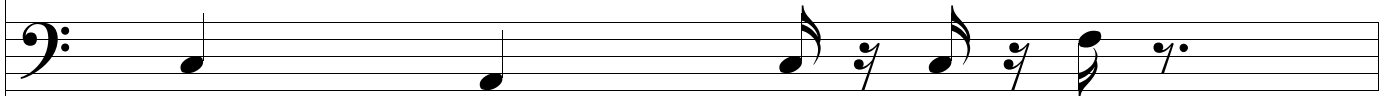
3: B-flat Clarinet



4: French Horn

Musical staff for French Horn 4, showing a sequence of notes and rests.

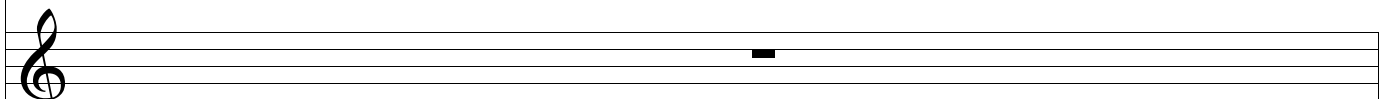
4: French Horn



5: Bassoon

Musical staff for Bassoon 5, showing a sequence of notes and rests.

5: Bassoon



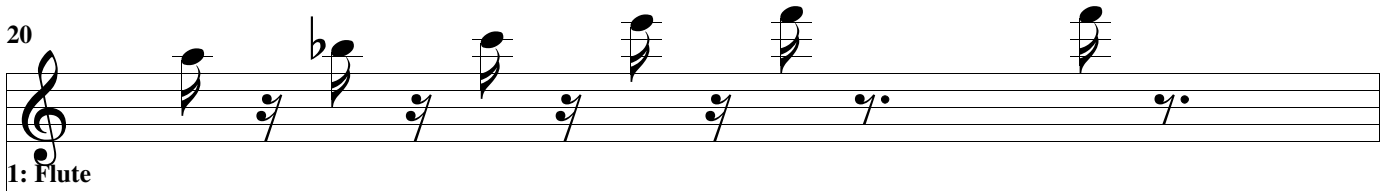
7: Track

Musical staff for Track 7, showing a single note.

7: Track

7

20



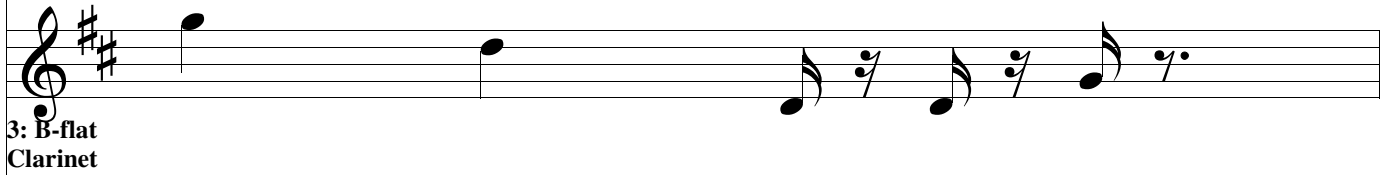
1: Flute

Musical staff for Flute 1, starting at measure 20. The staff contains a sequence of notes: G4 (quarter), A4 (quarter), Bb4 (quarter), A4 (quarter), G4 (quarter), F4 (quarter), E4 (quarter), D4 (quarter), C4 (quarter), B3 (quarter), A3 (quarter), G3 (quarter).



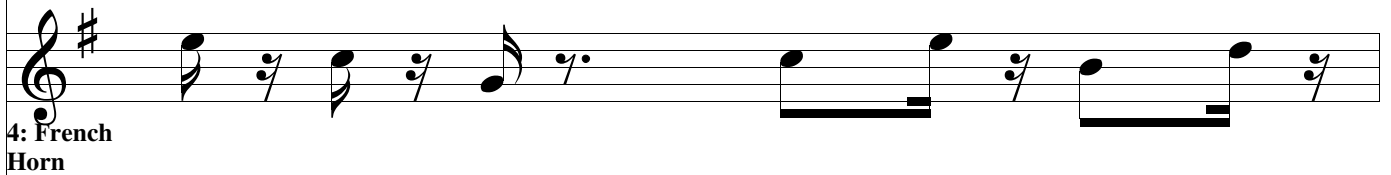
2: Oboe

Musical staff for Oboe 2, starting at measure 20. The staff contains a sequence of notes: G4 (quarter), A4 (quarter), B4 (quarter), A4 (quarter), G4 (quarter), F4 (quarter), E4 (quarter), D4 (quarter), C4 (quarter), B3 (quarter), A3 (quarter), G3 (quarter).



3: B-flat Clarinet

Musical staff for B-flat Clarinet 3, starting at measure 20. The staff contains a sequence of notes: G4 (quarter), A4 (quarter), B4 (quarter), A4 (quarter), G4 (quarter), F4 (quarter), E4 (quarter), D4 (quarter), C4 (quarter), B3 (quarter), A3 (quarter), G3 (quarter).



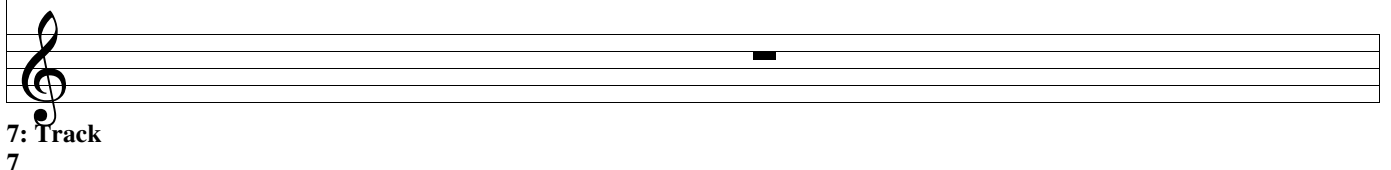
4: French Horn

Musical staff for French Horn 4, starting at measure 20. The staff contains a sequence of notes: G4 (quarter), A4 (quarter), B4 (quarter), A4 (quarter), G4 (quarter), F4 (quarter), E4 (quarter), D4 (quarter), C4 (quarter), B3 (quarter), A3 (quarter), G3 (quarter).



5: Bassoon

Musical staff for Bassoon 5, starting at measure 20. The staff contains a sequence of notes: G4 (quarter), A4 (quarter), B4 (quarter), A4 (quarter), G4 (quarter), F4 (quarter), E4 (quarter), D4 (quarter), C4 (quarter), B3 (quarter), A3 (quarter), G3 (quarter).

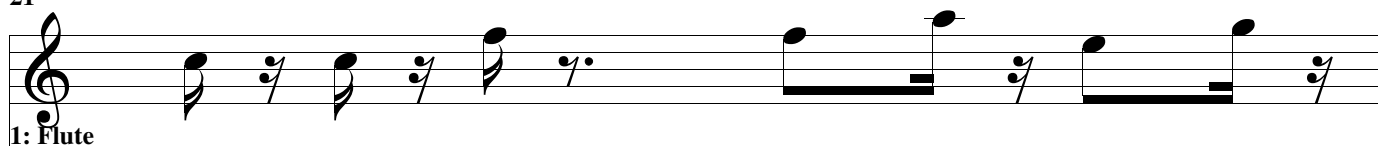


7: Track

7

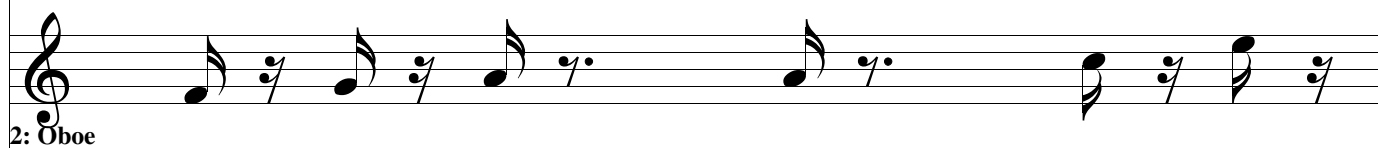
Musical staff for Track 7, starting at measure 20. The staff is empty.

21



1: Flute

Musical staff for Flute, showing a sequence of eighth notes and quarter notes with rests.




2: Oboe

Musical staff for Oboe, showing a sequence of eighth notes and quarter notes with rests.



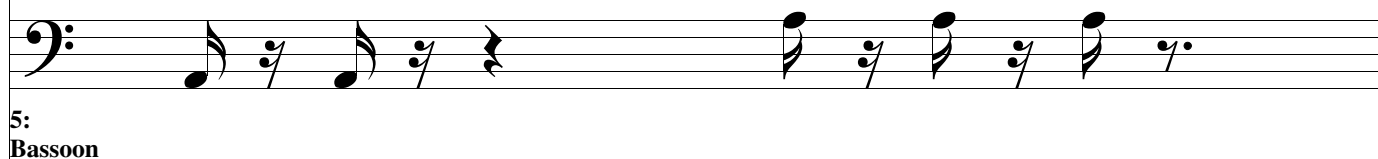
3: B-flat Clarinet

Musical staff for B-flat Clarinet, showing a sequence of eighth notes and quarter notes with rests.



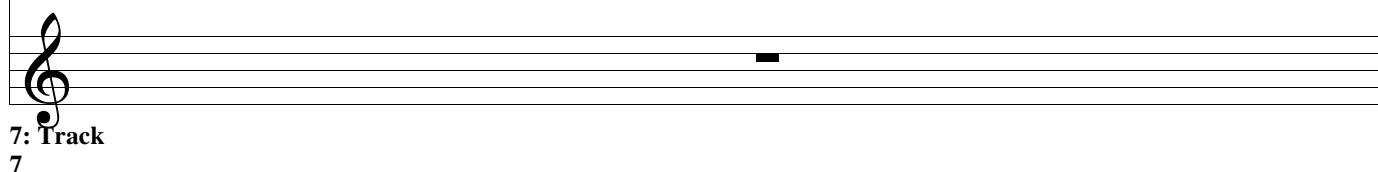
4: French Horn

Musical staff for French Horn, showing a sequence of eighth notes and quarter notes with rests.



5: Bassoon

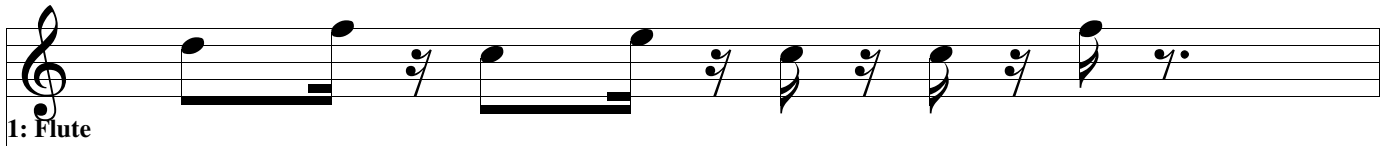
Musical staff for Bassoon, showing a sequence of eighth notes and quarter notes with rests.



7: Track
7

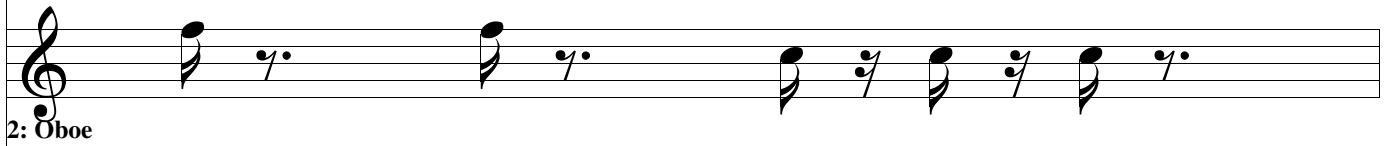
Musical staff for Track 7, showing a sequence of eighth notes and quarter notes with rests.

22



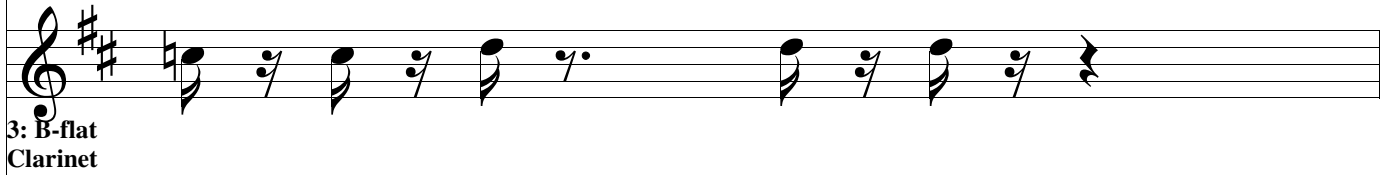
1: Flute

Musical staff for Flute 1, showing a sequence of eighth notes and rests.



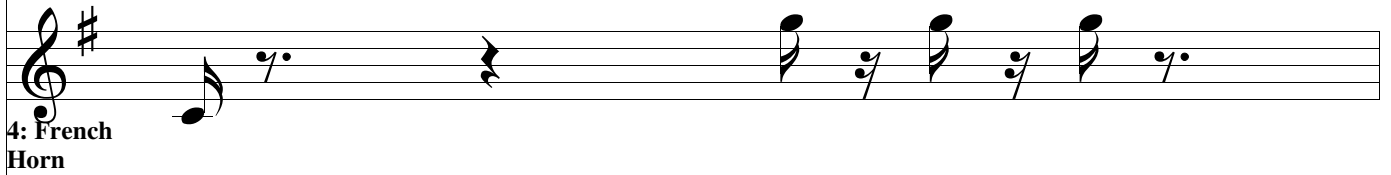
2: Oboe

Musical staff for Oboe 2, showing a sequence of eighth notes and rests.



3: B-flat Clarinet

Musical staff for B-flat Clarinet 3, showing a sequence of eighth notes and rests.



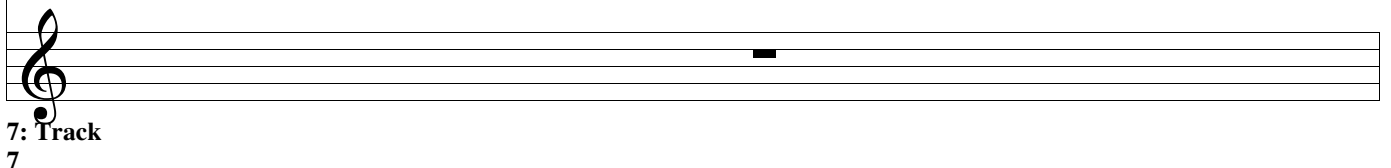
4: French Horn

Musical staff for French Horn 4, showing a sequence of eighth notes and rests.



5: Bassoon

Musical staff for Bassoon 5, showing a sequence of eighth notes and rests.



7: Track

7

Musical staff for Track 7, showing a sequence of eighth notes and rests.

23



1: Flute

Musical staff for Flute 1, showing a sequence of eighth notes with stems pointing up and down, followed by a quarter rest.

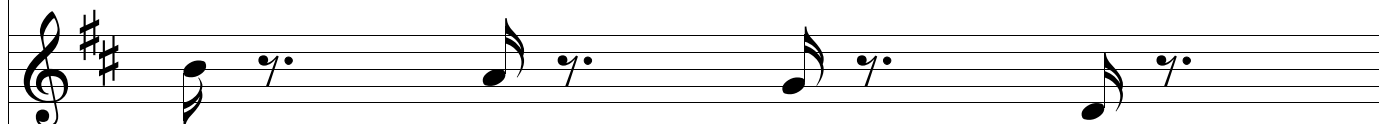
1: Flute



2: Oboe

Musical staff for Oboe 2, showing a sequence of eighth notes with stems pointing up and down, followed by a quarter rest.

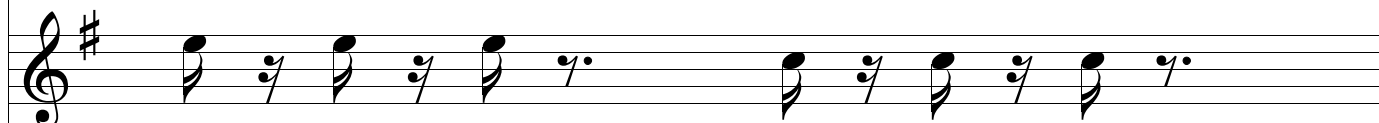
2: Oboe



3: B-flat Clarinet

Musical staff for B-flat Clarinet 3, showing a sequence of eighth notes with stems pointing up and down, followed by a quarter rest.

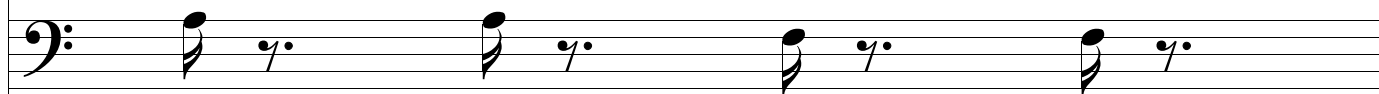
3: B-flat Clarinet



4: French Horn

Musical staff for French Horn 4, showing a sequence of eighth notes with stems pointing up and down, followed by a quarter rest.

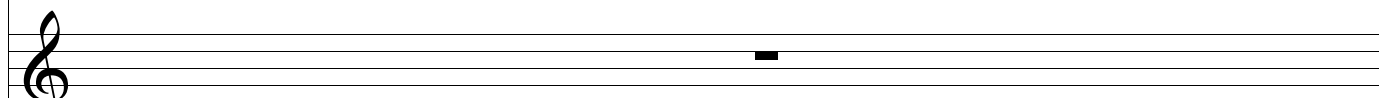
4: French Horn



5: Bassoon

Musical staff for Bassoon 5, showing a sequence of eighth notes with stems pointing up and down, followed by a quarter rest.

5: Bassoon



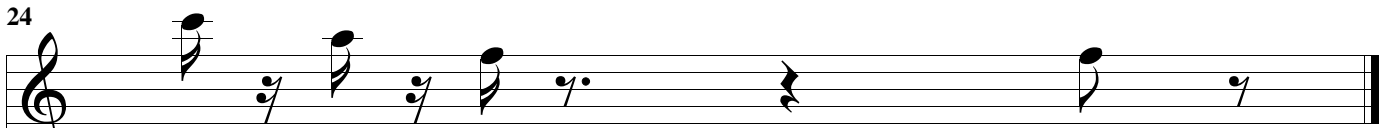
7: Track

Musical staff for Track 7, showing a single quarter rest.

7: Track

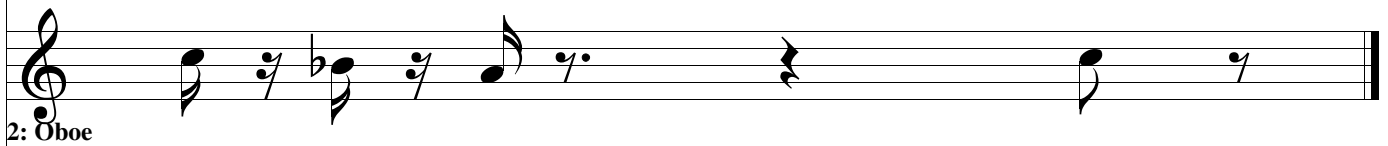
7

24



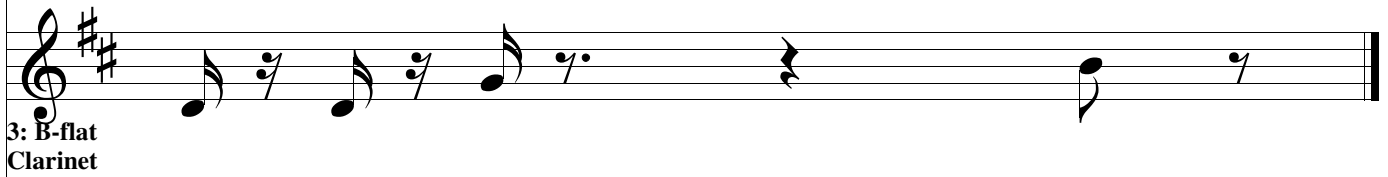
1: Flute

Musical staff for Flute 1, starting at measure 24. The staff contains a sequence of notes: G4, A4, B4, C5, B4, A4, G4, followed by a double bar line. The notes are quarter notes with stems pointing up.



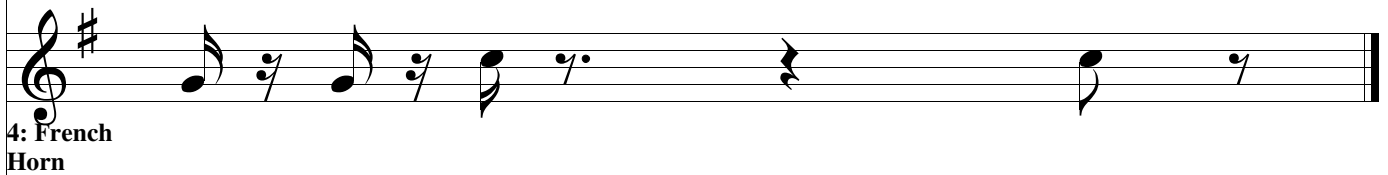
2: Oboe

Musical staff for Oboe 2, starting at measure 24. The staff contains a sequence of notes: G4, A4, B4, C5, B4, A4, G4, followed by a double bar line. The notes are quarter notes with stems pointing up.



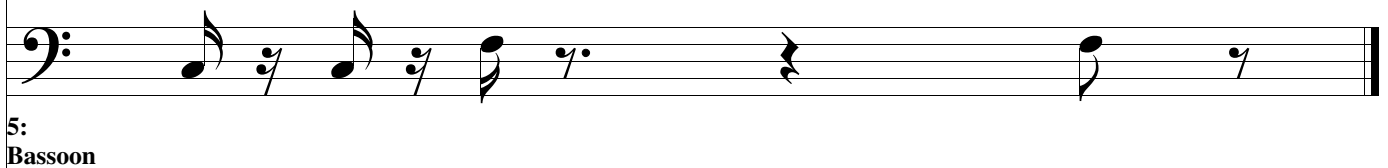
3: B-flat Clarinet

Musical staff for B-flat Clarinet 3, starting at measure 24. The staff contains a sequence of notes: G4, A4, B4, C5, B4, A4, G4, followed by a double bar line. The notes are quarter notes with stems pointing up.



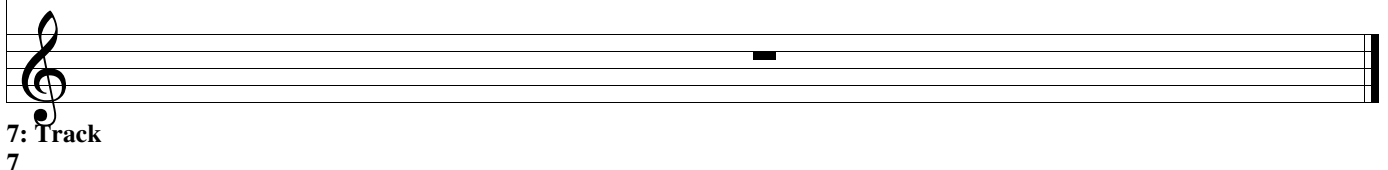
4: French Horn

Musical staff for French Horn 4, starting at measure 24. The staff contains a sequence of notes: G4, A4, B4, C5, B4, A4, G4, followed by a double bar line. The notes are quarter notes with stems pointing up.



5: Bassoon

Musical staff for Bassoon 5, starting at measure 24. The staff contains a sequence of notes: G4, A4, B4, C5, B4, A4, G4, followed by a double bar line. The notes are quarter notes with stems pointing up.



7: Track

7

Musical staff for Track 7, starting at measure 24. The staff is empty, indicating that the track is silent for this section.