

SHA-WUTNA

STRAIGHT 8'S

(A) Eb-

Db

B Δ 7

B7



E-

C-

B7sus4

B7(b9)

E7sus4

E7(b9)



(B) A-

E/G#

A-/G

D/F#

G-/F



C/E

F/Eb

B/D#



E7sus4(b9)

E7(b9)



(C) D-

G#o7

A-

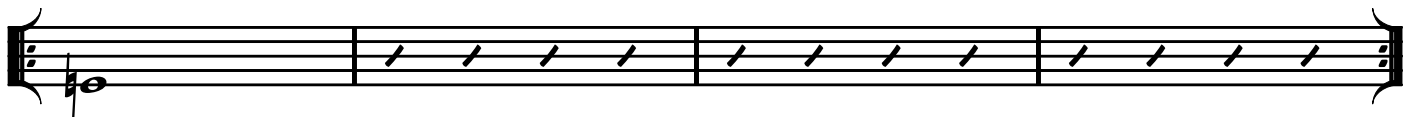
/G

D/F#

B7(b5)



E7(b9)



SOLO OVER 1ST PAGE, AFTER LAST SOLO GO ON TO 2ND PAGE

A E- D CΔ7 C7

F- Db- C7sus4 C7(b9) F7sus4 F7(b9)

Detailed description: Section A consists of two staves of music. The first staff starts with a treble clef and a key signature of one flat (Bb). The notes are: E4 (quarter), D4 (quarter), C4 (half), G4 (quarter), F4 (quarter), E4 (quarter), D4 (quarter), C4 (half). The second staff continues with: Bb4 (quarter), Ab4 (quarter), Gb4 (quarter), Fb4 (quarter), Eb4 (quarter), D4 (quarter), C4 (half), Bb4 (quarter), Ab4 (quarter), Gb4 (quarter), Fb4 (quarter), Eb4 (quarter), D4 (quarter), C4 (half).

B Bb- F/A Bb-/Ab Eb/G Ab-/Gb

Db/F Gb/E C/E

F7sus4(b9) F7(b9)

Detailed description: Section B consists of three staves. The first staff starts with a treble clef and a key signature of one flat. Notes: Bb4 (quarter), Ab4 (quarter), Gb4 (quarter), Fb4 (quarter), Eb4 (quarter), D4 (quarter), C4 (half), Bb4 (quarter), Ab4 (quarter), Gb4 (quarter), Fb4 (quarter), Eb4 (quarter), D4 (quarter), C4 (half). The second staff continues with: Db4 (quarter), C4 (half), Bb4 (quarter), Ab4 (quarter), Gb4 (quarter), Fb4 (quarter), Eb4 (quarter), D4 (quarter), C4 (half). The third staff shows a guitar-style notation with slashes for fretted notes and a final quarter note G4.

C Eb- AΔ7 Bb- /Ab

Eb/G C7(b5) F7(b9)

Detailed description: Section C consists of two staves. The first staff starts with a treble clef and a key signature of one flat. Notes: Eb4 (quarter), D4 (quarter), C4 (half), Bb4 (quarter), Ab4 (quarter), Gb4 (quarter), Fb4 (quarter), Eb4 (quarter), D4 (quarter), C4 (half). The second staff continues with: Eb4 (quarter), D4 (quarter), C4 (half), Bb4 (quarter), Ab4 (quarter), Gb4 (quarter), Fb4 (quarter), Eb4 (quarter), D4 (quarter), C4 (half).