



Richard Kearns

Arranger, Composer, Publisher, Teacher

Ireland, Ballybofey, Donegal

About the artist

Studied Piano and classical guitar

Most stuff in Concert pitch.. HOWEVER

If you need PDFs transposed email me...

If you make a comment please leave an Email Address

If you wish to play any of my work in public there is usually no problem. Just email me to let me know. All works played in public must give me credit for the composition or the arrangement....

I'm sorry I only speak Spanish or English

Thanks for the DONATIONS. They keep me going.

About the piece



Title:	Carol Of The Bells
Composer:	Leontovich, Mykola
Arranger:	Kearns, Richard
Licence:	Richard Kearns © All rights reserved
Publisher:	Kearns, Richard
Instrumentation:	Woodwind Quintet
Style:	Christmas, Carols
Comment:	Traditional Carol

Richard Kearns on [free-scores.com](http://www.free-scores.com)

<http://www.free-scores.com/Download-PDF-Sheet-Music-guiriel.htm>

- Donate / Financial compensation
- Download other works by this artist
- Listen to his pieces
- Contact the artist
- Write feedback comments
- Share your mp3 recording of this piece



This work is not Public Domain. You must contact the artist for any use outside the private area.

Carol Of The Bells

Mykola Leontovich.

Arranged R. Kearns
Richard Kearns © 2009

1

1: Flute

2: Oboe

3: F Horn

4: Clarinet

5: Bassoon

5

1: Flute

2: Oboe

3: F Horn

4: Clarinet

5: Bassoon

8

1: Flute

2: Oboe

3: F Horn

4: Clarinet

5: Bassoon

11

1: Flute

2: Oboe

3: F Horn

4: Clarinet

5: Bassoon

14

1: Flute

Detailed description: This staff shows the first flute part for measures 14, 15, and 16. The key signature has one flat (B-flat). Measure 14 contains a half note G4, a quarter note A4, and a quarter note B4. Measure 15 contains a quarter note C5, a quarter note D5, and a quarter note E5. Measure 16 contains a quarter note F5, a quarter note G5, and a quarter note A5.

2: Oboe

Detailed description: This staff shows the second oboe part for measures 14, 15, and 16. Measure 14 has a whole note G4. Measure 15 has a whole note A4. Measure 16 has a quarter note B4, a quarter note C5, and a quarter note D5.

3: F Horn

Detailed description: This staff shows the F horn part for measures 14, 15, and 16. Measure 14 has a half note G4. Measure 15 has a half note A4. Measure 16 has a half note B4.

4: Clarinet

Detailed description: This staff shows the clarinet part for measures 14, 15, and 16. Measure 14 has a whole note G4. Measure 15 has a whole note A4. Measure 16 has a quarter note B4, a quarter note C5, and a quarter note D5.

5: Bassoon

Detailed description: This staff shows the bassoon part for measures 14, 15, and 16. Measure 14 has a half note G3. Measure 15 has a half note A3. Measure 16 has a quarter note B3, a quarter note C4, and a quarter note D4.

17

1: Flute

Detailed description: This staff shows the first flute part for measures 17, 18, and 19. Measure 17 contains a half note G4, a quarter note A4, and a quarter note B4. Measure 18 contains a quarter note C5, a quarter note D5, and a quarter note E5. Measure 19 contains a quarter note F5, a quarter note G5, and a quarter note A5.

2: Oboe

Detailed description: This staff shows the second oboe part for measures 17, 18, and 19. Measure 17 has a quarter note B4, a quarter note C5, and a quarter note D5. Measure 18 has a quarter note E5, a quarter note F5, and a quarter note G5. Measure 19 has a quarter note A5, a quarter note B5, and a quarter note C6.

3: F Horn

Detailed description: This staff shows the F horn part for measures 17, 18, and 19. Measure 17 has a half note G4. Measure 18 has a half note A4. Measure 19 has a half note B4.

4: Clarinet

Detailed description: This staff shows the clarinet part for measures 17, 18, and 19. Measure 17 has a quarter note B4, a quarter note C5, and a quarter note D5. Measure 18 has a quarter note E5, a quarter note F5, and a quarter note G5. Measure 19 has a quarter note A5, a quarter note B5, and a quarter note C6.

5: Bassoon

Detailed description: This staff shows the bassoon part for measures 17, 18, and 19. Measure 17 has a quarter note B3, a quarter note C4, and a quarter note D4. Measure 18 has a quarter note E4, a quarter note F4, and a quarter note G4. Measure 19 has a quarter note A4, a quarter note B4, and a quarter note C5.

20

1: Flute

Musical staff for Flute 1, measures 20-22. The staff is in treble clef with a key signature of two flats (B-flat and E-flat). The music consists of eighth notes and quarter notes.

2: Oboe

Musical staff for Oboe 2, measures 20-22. The staff is in treble clef with a key signature of two flats. The music features eighth notes and quarter notes with rests.

3: F Horn

Musical staff for F Horn 3, measures 20-22. The staff is in treble clef with a key signature of two flats. The music includes quarter notes and eighth notes.

4: Clarinet

Musical staff for Clarinet 4, measures 20-22. The staff is in treble clef with a key signature of two flats. The music consists of eighth notes and quarter notes.

5: Bassoon

Musical staff for Bassoon 5, measures 20-22. The staff is in bass clef with a key signature of two flats. The music features half notes and quarter notes.

23

1: Flute

Musical staff for Flute 1, measures 23-25. The staff is in treble clef with a key signature of two flats. The music consists of eighth notes and quarter notes.

2: Oboe

Musical staff for Oboe 2, measures 23-25. The staff is in treble clef with a key signature of two flats. The music features eighth notes and quarter notes.

3: F Horn

Musical staff for F Horn 3, measures 23-25. The staff is in treble clef with a key signature of two flats. The music includes eighth notes and quarter notes.

4: Clarinet

Musical staff for Clarinet 4, measures 23-25. The staff is in treble clef with a key signature of two flats. The music consists of eighth notes and quarter notes.

5: Bassoon

Musical staff for Bassoon 5, measures 23-25. The staff is in bass clef with a key signature of two flats. The music features eighth notes and quarter notes.

27

1: Flute

Musical staff for Flute 1, measures 27-29. The staff is in treble clef with a key signature of two flats (B-flat and E-flat). The melody consists of eighth and quarter notes.

1: Flute

2: Oboe

Musical staff for Oboe 2, measures 27-29. The staff is in treble clef with a key signature of two flats. The melody consists of quarter and eighth notes.

2: Oboe

3: F Horn

Musical staff for F Horn 3, measures 27-29. The staff is in treble clef with a key signature of two flats. The part features rests and quarter notes.

3: F Horn

4: Clarinet

Musical staff for Clarinet 4, measures 27-29. The staff is in treble clef with a key signature of two flats. The part includes eighth notes, quarter notes, and a half note.

4: Clarinet

5: Bassoon

Musical staff for Bassoon 5, measures 27-29. The staff is in bass clef with a key signature of two flats. The part includes quarter and eighth notes.

5: Bassoon

30

1: Flute

Musical staff for Flute 1, measures 30-32. The staff is in treble clef with a key signature of two flats. The melody continues with eighth and quarter notes.

1: Flute

2: Oboe

Musical staff for Oboe 2, measures 30-32. The staff is in treble clef with a key signature of two flats. The part features a continuous eighth-note line.

2: Oboe

3: F Horn

Musical staff for F Horn 3, measures 30-32. The staff is in treble clef with a key signature of two flats. The part consists of quarter notes.

3: F Horn

4: Clarinet

Musical staff for Clarinet 4, measures 30-32. The staff is in treble clef with a key signature of two flats. The part includes quarter notes and rests.

4: Clarinet

5: Bassoon

Musical staff for Bassoon 5, measures 30-32. The staff is in bass clef with a key signature of two flats. The part consists of quarter notes.

5: Bassoon

33

1: Flute

Musical staff for Flute 1, measures 33-35. The staff is in treble clef with a key signature of one flat (B-flat). Measure 33 contains a quarter rest followed by eighth notes G4, A4, Bb4, and A4. Measure 34 contains quarter notes G4, A4, Bb4, and A4. Measure 35 contains quarter notes G4, A4, Bb4, and A4.

1: Flute

2: Oboe

Musical staff for Oboe 2, measures 33-35. The staff is in treble clef with a key signature of one flat. Measure 33 contains quarter notes G4, A4, Bb4, and A4. Measure 34 contains quarter notes G4, A4, Bb4, and A4. Measure 35 contains quarter notes G4, A4, Bb4, and A4.

3: F Horn

Musical staff for F Horn 3, measures 33-35. The staff is in treble clef with a key signature of one flat. Measure 33 contains a whole note G4. Measure 34 contains a whole note A4. Measure 35 contains a whole note Bb4.

4: Clarinet

Musical staff for Clarinet 4, measures 33-35. The staff is in treble clef with a key signature of one flat. Measure 33 contains a quarter note G4 followed by a quarter rest. Measure 34 contains a quarter note A4 followed by a quarter rest. Measure 35 contains a quarter note Bb4 followed by a quarter rest.

5: Bassoon

Musical staff for Bassoon 5, measures 33-35. The staff is in bass clef with a key signature of one flat. Measure 33 contains a whole note G3. Measure 34 contains a whole note A3. Measure 35 contains a whole note Bb3.

5: Bassoon

36

1: Flute

Musical staff for Flute 1, measures 36-40. The staff is in treble clef with a key signature of one flat. Measure 36 contains quarter notes G4, A4, Bb4, and A4. Measure 37 contains quarter notes G4, A4, Bb4, and A4. Measure 38 contains quarter notes G4, A4, Bb4, and A4. Measure 39 contains quarter notes G4, A4, Bb4, and A4. Measure 40 contains quarter notes G4, A4, Bb4, and A4.

1: Flute

2: Oboe

Musical staff for Oboe 2, measures 36-40. The staff is in treble clef with a key signature of one flat. Measure 36 contains eighth notes G4, A4, Bb4, A4, G4, F4. Measure 37 contains eighth notes G4, A4, Bb4, A4, G4, F4. Measure 38 contains eighth notes G4, A4, Bb4, A4, G4, F4. Measure 39 contains eighth notes G4, A4, Bb4, A4, G4, F4. Measure 40 contains eighth notes G4, A4, Bb4, A4, G4, F4.

3: F Horn

Musical staff for F Horn 3, measures 36-40. The staff is in treble clef with a key signature of one flat. Measure 36 contains a whole note G4. Measure 37 contains a whole note A4. Measure 38 contains a whole note Bb4. Measure 39 contains a whole note G4. Measure 40 contains a whole note F4.

4: Clarinet

Musical staff for Clarinet 4, measures 36-40. The staff is in treble clef with a key signature of one flat. Measure 36 contains a quarter note G4 followed by a quarter rest. Measure 37 contains a quarter note A4 followed by a quarter rest. Measure 38 contains a quarter note Bb4 followed by a quarter rest. Measure 39 contains eighth notes G4, A4, Bb4, and A4. Measure 40 contains eighth notes G4, A4, Bb4, and A4.

5: Bassoon

Musical staff for Bassoon 5, measures 36-40. The staff is in bass clef with a key signature of one flat. Measure 36 contains eighth notes G3, A3, Bb3, and A3. Measure 37 contains eighth notes G3, A3, Bb3, and A3. Measure 38 contains eighth notes G3, A3, Bb3, and A3. Measure 39 contains eighth notes G3, A3, Bb3, and A3. Measure 40 contains eighth notes G3, A3, Bb3, and A3.

5: Bassoon

42



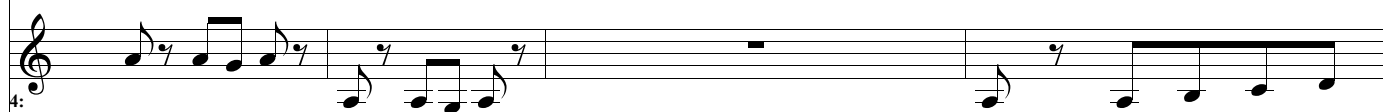
1: Flute



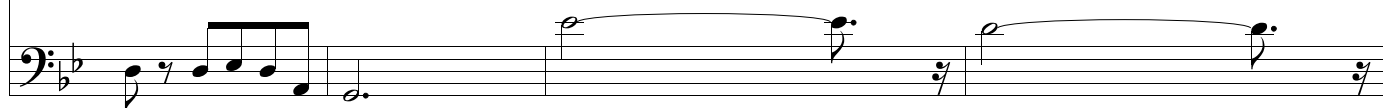
2: Oboe



3: F Horn



4: Clarinet

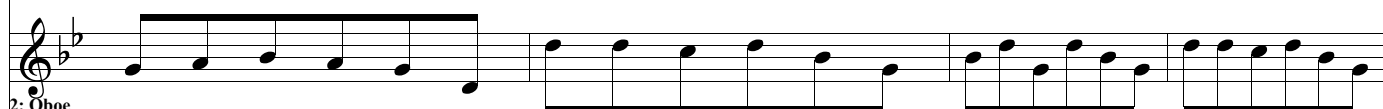


5: Bassoon

46



1: Flute



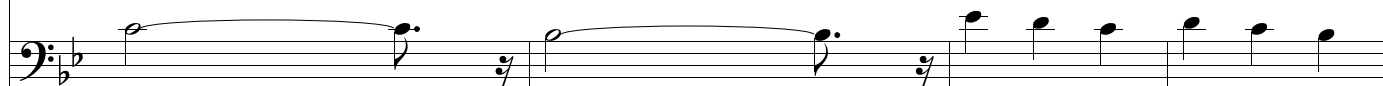
2: Oboe



3: F Horn



4: Clarinet



5: Bassoon

50

1: Flute

2: Oboe

3: F Horn

4: Clarinet

5: Bassoon

Detailed description: This system contains five staves of music for measures 50 through 53. The key signature has two flats (B-flat and E-flat). The Flute (1) part starts with a quarter note G4, followed by eighth notes A4-B4, quarter notes C5-B4, and quarter notes A4-G4. The Oboe (2) part plays a continuous eighth-note pattern: G4-A4-B4-C5-B4-A4-G4. The F Horn (3) part has rests for the first two measures, then plays quarter notes G3, A3, B3, and C4. The Clarinet (4) part plays quarter notes G4, A4, B4, and C5. The Bassoon (5) part plays quarter notes G3, A3, B3, and C4, with a fermata over the final note.

54

1: Flute

2: Oboe

3: F Horn

4: Clarinet

5: Bassoon

Detailed description: This system contains five staves of music for measures 54 through 57. The key signature remains two flats. The Flute (1) part starts with a quarter note G4, followed by eighth notes A4-B4, quarter notes C5-B4, and a sixteenth-note triplet G4-A4-B4. The Oboe (2) part continues with the eighth-note pattern from the previous system. The F Horn (3) part has rests for the first two measures, then plays quarter notes G3, A3, and B3. The Clarinet (4) part plays quarter notes G4, A4, B4, and C5. The Bassoon (5) part plays quarter notes G3, A3, B3, and C4.

58

1: Flute

Musical staff for Flute 1, measures 58-60. The staff is in treble clef with a key signature of two flats. Measure 58 contains a series of eighth notes with stems pointing down. Measure 59 continues with eighth notes, some with stems pointing up. Measure 60 features a half note with a sharp sign above it, followed by two more half notes.

2: Oboe

Musical staff for Oboe, measures 58-60. The staff is in treble clef with a key signature of two flats. It contains a steady eighth-note line across all three measures.

3: F Horn

Musical staff for F Horn, measures 58-60. The staff is in treble clef with a key signature of two flats. It contains a few scattered notes, including a half note with a flat sign below it in measure 60.

4: Clarinet

Musical staff for Clarinet, measures 58-60. The staff is in treble clef with a key signature of two flats. It contains a series of eighth notes and a half note with a flat sign below it in measure 60.

5: Bassoon

Musical staff for Bassoon, measures 58-60. The staff is in bass clef with a key signature of two flats. It contains a few scattered notes, including a half note with a flat sign below it in measure 60.

61

1: Flute

Musical staff for Flute 1, measures 61-63. The staff is in treble clef with a key signature of two flats. Measure 61 has eighth notes with stems pointing up. Measure 62 has a half note with a sharp sign above it, followed by two more half notes. Measure 63 has eighth notes with stems pointing down.

2: Oboe

Musical staff for Oboe, measures 61-63. The staff is in treble clef with a key signature of two flats. It contains a steady eighth-note line across all three measures.

3: F Horn

Musical staff for F Horn, measures 61-63. The staff is in treble clef with a key signature of two flats. It contains a few scattered notes, including a half note with a flat sign below it in measure 63.

4: Clarinet

Musical staff for Clarinet, measures 61-63. The staff is in treble clef with a key signature of two flats. It contains a series of eighth notes and a half note with a flat sign below it in measure 63.

5: Bassoon

Musical staff for Bassoon, measures 61-63. The staff is in bass clef with a key signature of two flats. It contains a few scattered notes, including a half note with a flat sign below it in measure 63.

5:
Bassoon

65

1: Flute

Musical staff for Flute 1, measures 65-67. The staff contains a melodic line with eighth and sixteenth notes, including slurs and accents.

2: Oboe

Musical staff for Oboe 2, measures 65-67. The staff contains a steady eighth-note accompaniment.

3: F Horn

Musical staff for F Horn 3, measures 65-67. The staff contains a simple harmonic accompaniment with dotted half notes.

4: Clarinet

Musical staff for Clarinet 4, measures 65-67. The staff contains a melodic line with slurs and accents.

5: Bassoon

Musical staff for Bassoon 5, measures 65-67. The staff contains a simple harmonic accompaniment with dotted half notes.

68

1: Flute

Musical staff for Flute 1, measures 68-70. The staff contains a steady eighth-note accompaniment.

2: Oboe

Musical staff for Oboe 2, measures 68-70. The staff contains a melodic line with eighth and sixteenth notes, including slurs and accents.

3: F Horn

Musical staff for F Horn 3, measures 68-70. The staff contains a simple harmonic accompaniment with dotted half notes.

4: Clarinet

Musical staff for Clarinet 4, measures 68-70. The staff contains a simple harmonic accompaniment with dotted half notes.

5: Bassoon

Musical staff for Bassoon 5, measures 68-70. The staff contains a simple harmonic accompaniment with dotted half notes.

5:
Bassoon

71

1: Flute

2: Oboe

3: F Horn

4: Clarinet

5: Bassoon